



New Street | | Poole | BH15 1JT

£300,000



**QSALES &  
LETTINGS**



New Street |  
 Poole | BH15 1JT  
 £300,000

Situated on New Street, close to Poole Quay this 4/ 5 bedroom house is located in a great position!

Generous sized open plan kitchen and lounge and downstairs W/C.

Understairs storage.

Kitchen with space for whitegoods.

First floor includes FOUR double bedrooms.

Family bathroom.

Hallway storage cupboard.

Each room is generously sized and includes a skylight.

Gas central heating throughout.

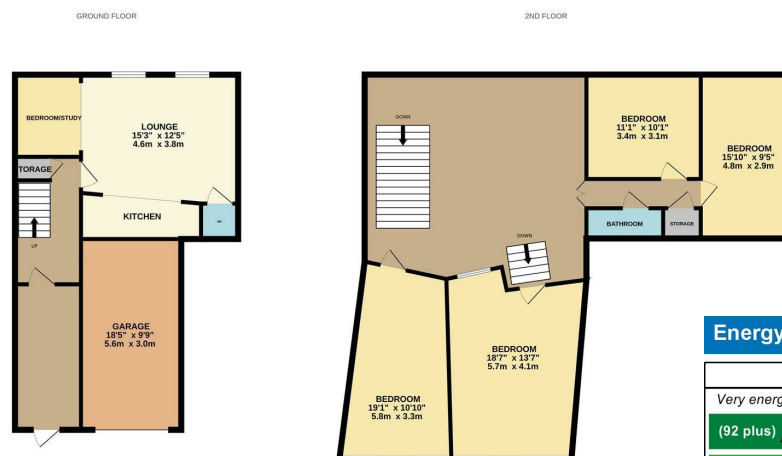
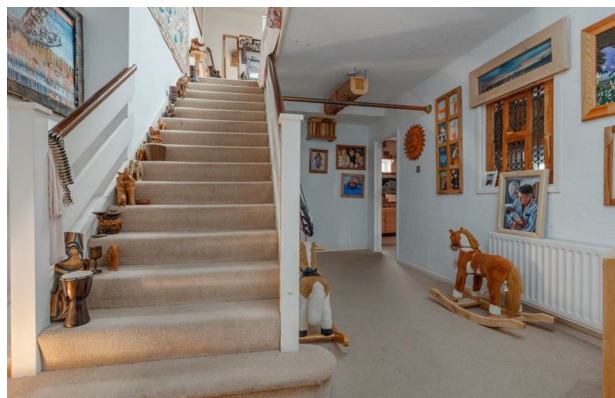
Garage offering great storage/ workshop or parking.

The property is located in a fantastic location in Poole, 5 minute walk from the Dolphin centre & Poole train station. All of Poole's local amenities are nearby.

Sold as FREEHOLD & current rental figure is £950pcm on contractual periodic tenancy. No sinking fund or management account.

EPC: D

To arrange a viewing, please call 01202 283654



Whilst every attempt has been made to ensure the accuracy of the floorplan contained herein, measurements of doors, windows, rooms and any other items are approximate and no responsibility is taken for any error, omission or mis-statement. This plan is for illustrative purposes only and should be used to assist by any prospective purchaser. The services, systems and appliances shown have not been tested and no guarantee, as to their operability or efficiency can be given. Made with Metropix ©2025

Energy Efficiency Rating		
	Current	Potential
<i>Very energy efficient - lower running costs</i>		
(92 plus) <b>A</b>		
(81-91) <b>B</b>		
(69-80) <b>C</b>		
(55-68) <b>D</b>		
(39-54) <b>E</b>		
(21-38) <b>F</b>		
(1-20) <b>G</b>		
<i>Not energy efficient - higher running costs</i>		
<b>England &amp; Wales</b>	EU Directive 2002/91/EC	