



New Street | | Poole | BH15 1JT

£300,000



**QSALES &
LETTINGS**

New Street |
Poole | BH15 1JT
£300,000

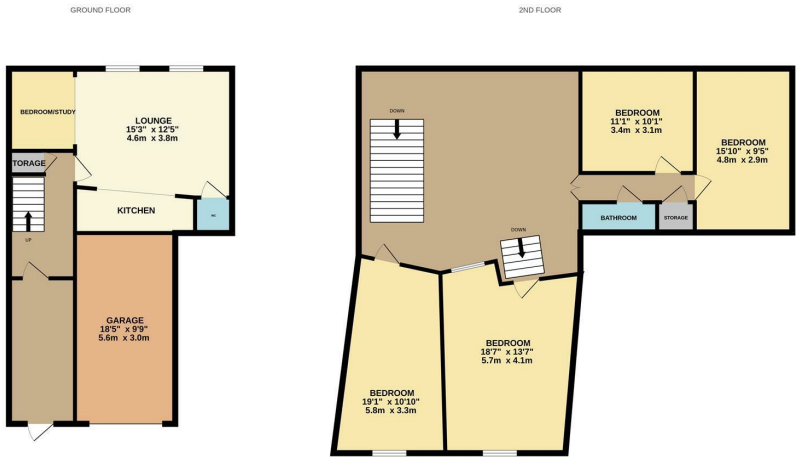
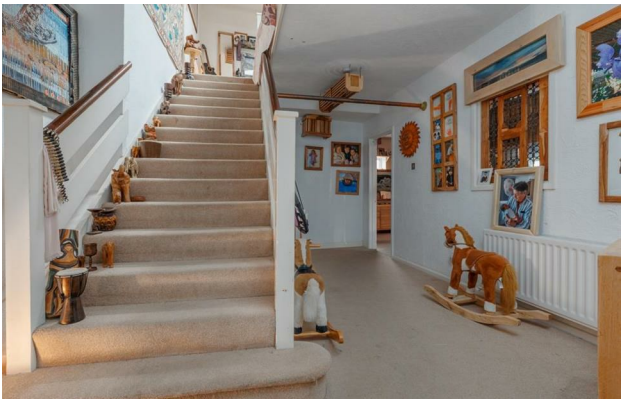
Situated on New Street, close to Poole Quay this 4/ 5 bedroom house is located in a great position!

Generous sized open plan kitchen and lounge and downstairs W/C.

Understairs storage.

Kitchen with space for whitegoods.

First floor includes FOUR double bedrooms.



Whilst every attempt has been made to ensure the accuracy of the floorplan contained here, measurements of doors, windows, rooms and any other items are approximate and no responsibility is taken for any error, omission or mis-statement. This plan is for illustrative purposes only and should be used as such by any prospective purchaser. The services, systems and appliances shown have not been tested and no guarantee as to their operability or efficiency can be given.
Made with floorplan 12025

Energy Efficiency Rating		
	Current	Potential
Very energy efficient - lower running costs		
(92 plus) A		
(81-91) B		
(69-80) C		
(55-68) D		
(39-54) E		
(21-38) F		
(1-20) G		
Not energy efficient - higher running costs		
England & Wales	EU Directive 2002/91/EC	

Garden Studio
105 Orchard Avenue
Poole
Dorset
BH14 8AH
Jamie@qsaleslettings.co.uk