



Shermanbury Court, Blenheim Road, Horsham, RH12 5FD
£1,300 Per month

& LINES
James

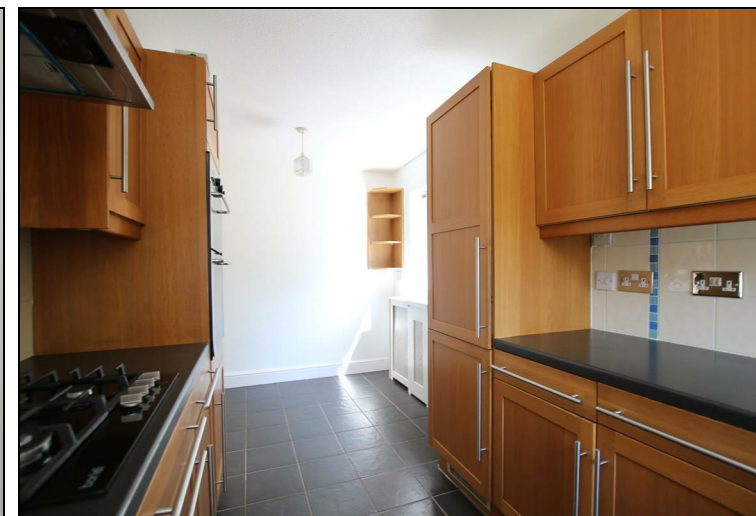
Shermanbury Court, Blenheim Road

- FIRST FLOOR FLAT
- TWO BEDROOMS
- POPULAR LOCATION
- SPACIOUS
- UNFURNISHED
- EPC RATING C
- COUNCIL TAX BAND B
- 12 MONTHS +
- DEPOSIT = £1500.00
- AVAILABLE NOW

A very spacious two bedroom first floor flat situated in a popular location with balcony.

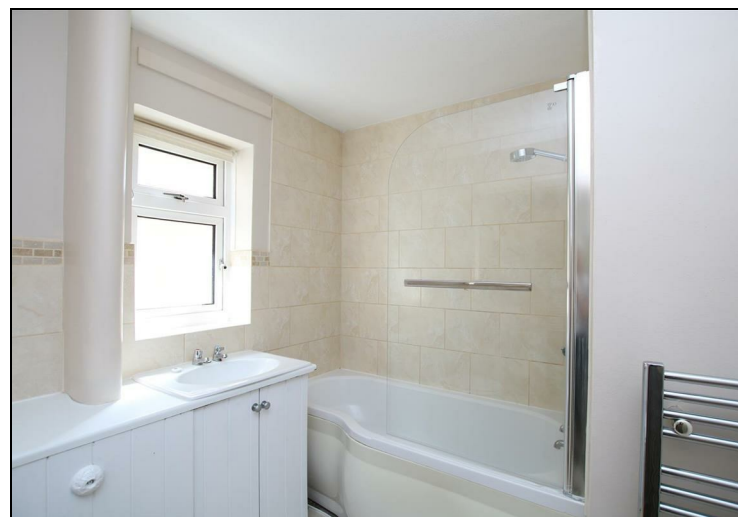
A two bedroom flat located off North Heath Lane within walking distance of both railway stations and the town centre. The property is generous in size with accommodation comprising: Entrance hall with storage cupboard/utility area, dual aspect lounge/diner with balcony, kitchen/diner, two double bedrooms with fitted wardrobes and bathroom with shower over bath.

Additional features include G.C.H, double glazing and storage cupboard on the communal landing.





& LINES
James



GROUND FLOOR



Measurements are approximate and not to scale. Bedroom measurements do not take into account the fitted wardrobes. This plan is for illustrative purposes only and should only be used as such by any prospective tenant. No responsibility is taken for any error, omission or mis-statement. Made with Metropix ©2024.



Energy Efficiency Rating			Environmental Impact (CO ₂) Rating		
Very energy efficient - lower running costs	Current	Potential	Very environmentally friendly - lower CO ₂ emissions	Current	Potential
(92 plus) A			(92 plus) A		
(81-91) B			(81-91) B		
(69-80) C			(69-80) C		
(55-68) D			(55-68) D		
(39-54) E			(39-54) E		
(21-38) F			(21-38) F		
(1-20) G			(1-20) G		
Not energy efficient - higher running costs			Not environmentally friendly - higher CO ₂ emissions		
England & Wales	EU Directive 2002/91/EC		England & Wales	EU Directive 2002/91/EC	