



Oakwood Close, Midhurst, GU29 9QS
£1,600 Per month

& LINES
James

Oakwood Close, Midhurst

- THREE BEDROOMS
- TERRACED
- WELL PRESENTED
- SPACIOUS
- EPC RATING C
- COUNCIL TAX BAND D
- DEPOSIT £1846.15
- 12 MONTHS +
- AVAILABLE NOW

A well presented and spacious three bedroom terraced house situated in the charming town of Midhurst.

Lines & James are thrilled to bring this family home to the market, situated in a cul-de-sac within walking distance of the town centre. Midhurst is renowned for its picturesque surroundings and vibrant community, making this property an excellent choice for those looking to enjoy a tranquil lifestyle while remaining close to local amenities. The property offers well appointed accommodation which comprises: Entrance hall, cloakroom, fitted kitchen, light and airy living room which features focal fireplace and patio doors to the rear garden, separate dining room with storage cupboard. Upstairs all the bedrooms are good size with the main bedroom benefiting from a range of fitted wardrobes. The shower room is fitted with a corner enclosure, with useful storage in a built in vanity unit.

The attractive rear garden enjoys plenty of sun, with a shed for storage. The property also benefits from driveway parking for one car, gas central heating and double glazing throughout.



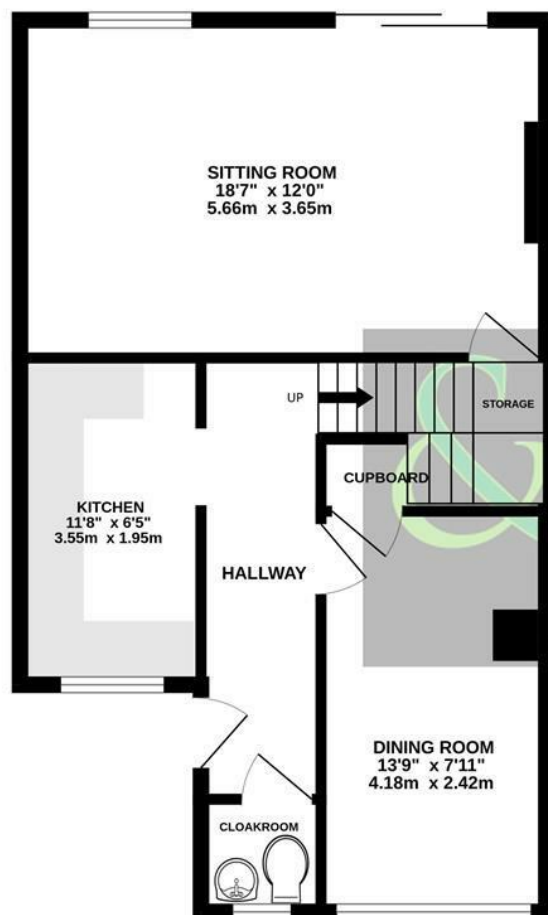


& LINES
James

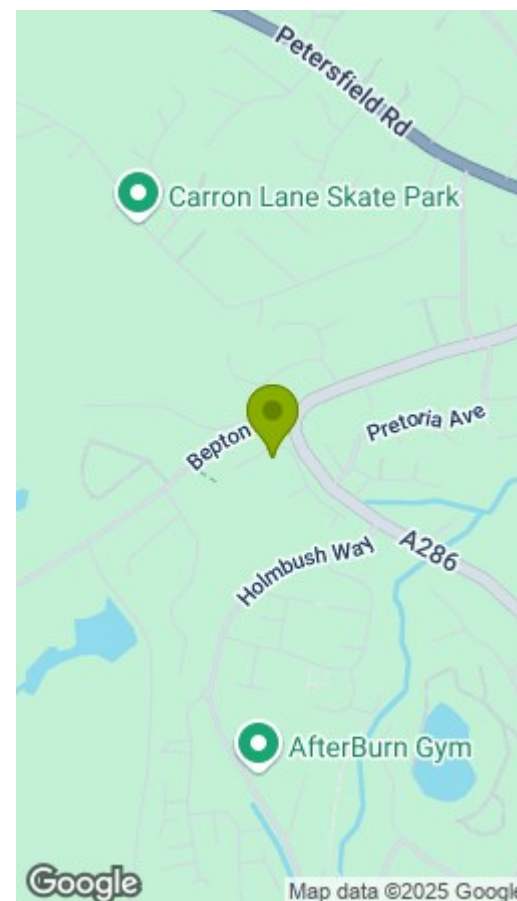
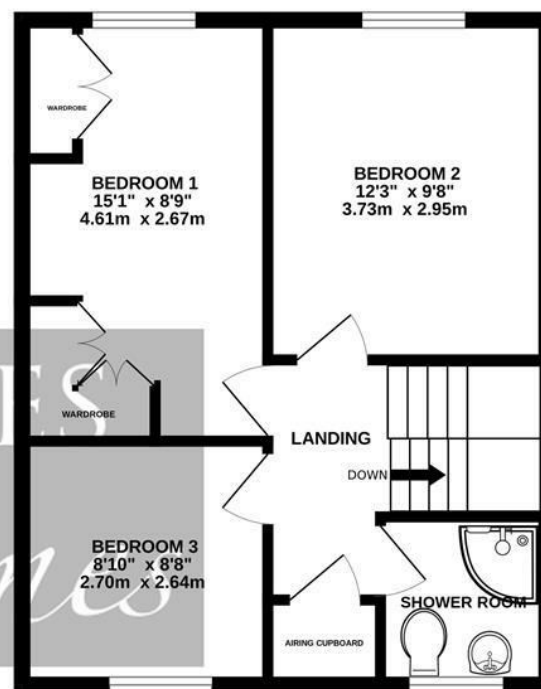




GROUND FLOOR



1ST FLOOR



Energy Efficiency Rating			Environmental Impact (CO ₂) Rating		
	Current	Potential		Current	Potential
Very energy efficient - lower running costs			Very environmentally friendly - lower CO ₂ emissions		
(92 plus) A		88	(92 plus) A		
(81-91) B			(81-91) B		
(69-80) C			(69-80) C		
(55-68) D			(55-68) D		
(39-54) E			(39-54) E		
(21-38) F			(21-38) F		
(1-20) G			(1-20) G		
Not energy efficient - higher running costs			Not environmentally friendly - higher CO ₂ emissions		
England & Wales	EU Directive 2002/91/EC		England & Wales	EU Directive 2002/91/EC	

Measurements are approximate and not to scale. Bedroom measurements do not take into account the fitted wardrobes. This plan is for illustrative purposes only and should only be used as such by any prospective tenant. No responsibility is taken for any error, omission or mis-statement.
Made with Metropix ©2025