



Sycamore Avenue, Horsham, Sussex RH12 4TP
£1,350 Per month

& LINES
James

Sycamore Avenue

- TERRACED
- POPULAR LOCATION
- TWO BEDROOMS
- UNFURNISHED
- EPC RATING D
- COUNCIL TAX BAND C
- 12 MONTHS +
- DEPOSIT £1557.69
- AVAILABLE JULY

A two double bedroom terrace house located north of Horsham with street parking, GCH and offering great access to the A264.

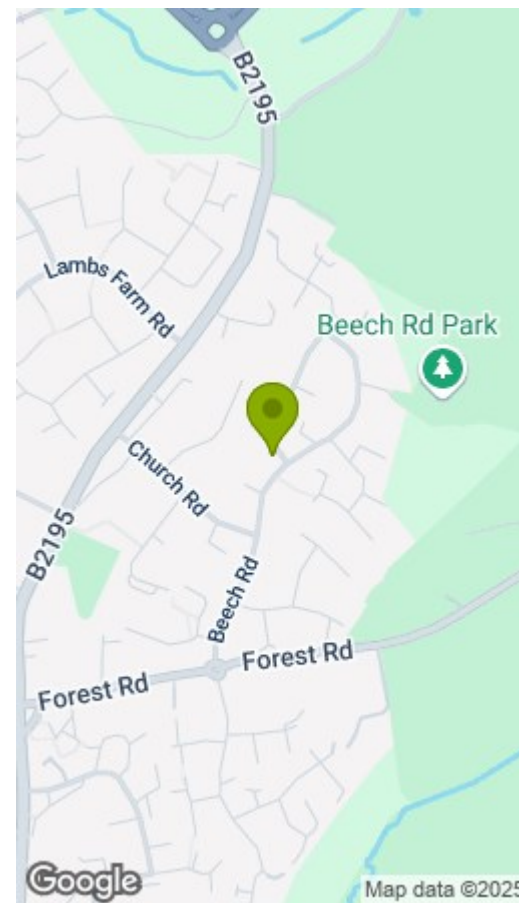
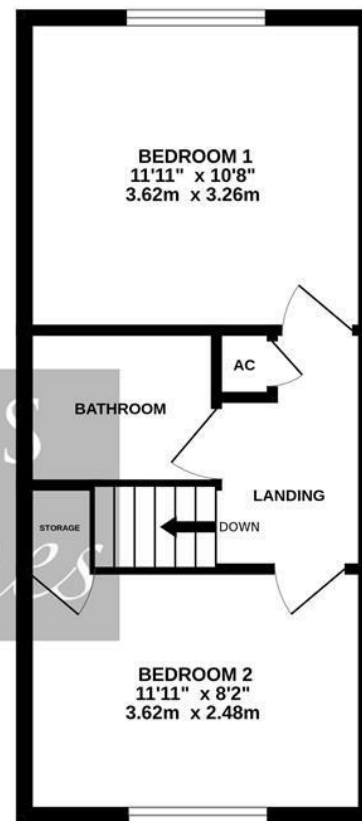
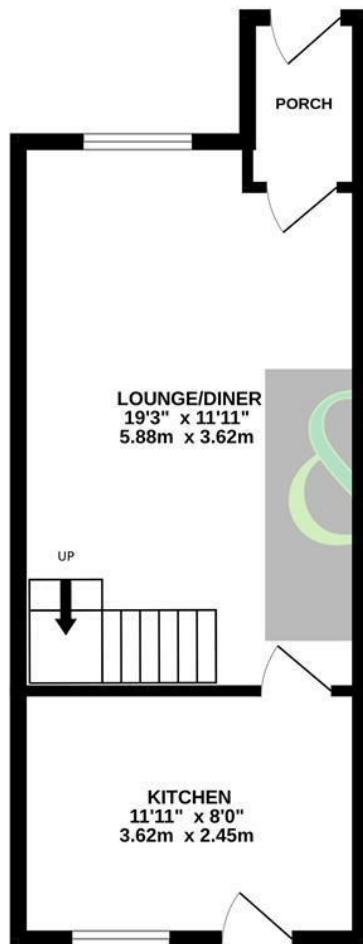
Lines & James are pleased to bring this spacious two double bedroom house to the market, the accommodation comprises; Porch area leading to the large lounge, fitted kitchen with access to the rear garden. Upstairs you will find, two good sized double bedrooms and the family bathroom with shower over the bath. The property benefits from rear garden, double glazing throughout, GCH and great access to the A264.





GROUND FLOOR

1ST FLOOR



Energy Efficiency Rating		
	Current	Potential
Very energy efficient - lower running costs		
(92 plus) A		91
(81-91) B		
(69-80) C	67	
(55-68) D		
(39-54) E		
(21-38) F		
(1-20) G		
Not energy efficient - higher running costs		
England & Wales	EU Directive 2002/91/EC	

Environmental Impact (CO ₂) Rating		
	Current	Potential
Very environmentally friendly - lower CO ₂ emissions		
(92 plus) A		92
(81-91) B		
(69-80) C		
(55-68) D		64
(39-54) E		
(21-38) F		
(1-20) G		
Not environmentally friendly - higher CO ₂ emissions		
England & Wales	EU Directive 2002/91/EC	

Measurements are approximate and not to scale. Bedroom measurements do not take into account the fitted wardrobes. This plan is for illustrative purposes only and should only be used as such by any prospective tenant. No responsibility is taken for any error, omission or mis-statement. Made with Metropix ©2024

& LINES
James

24 Worthing Road, Horsham, West Sussex, RH12 1SL
Tel: 01403 210088
lettings@linesandjames.com
www.linesandjames.com

MANAGING PROPERTIES ...

Finding Homes ...

