



Ridgehurst Drive, Horsham, Sussex RH12 1XF
£1,100 Per month

& LINES
James

Ridgehurst Drive, Horsham

A freshly decorated one bedroom semi-detached house situated in walking distance of the town centre.

Lines & James are pleased to offer to the market this one bedroom semi-detached house situated in a cul-de-sac location with accommodation comprising: Entrance, living room, fitted kitchen, double bedroom and bathroom with shower over bath. Additional benefits include pretty courtyard garden gas central heating, double glazing and allocated parking for one car.

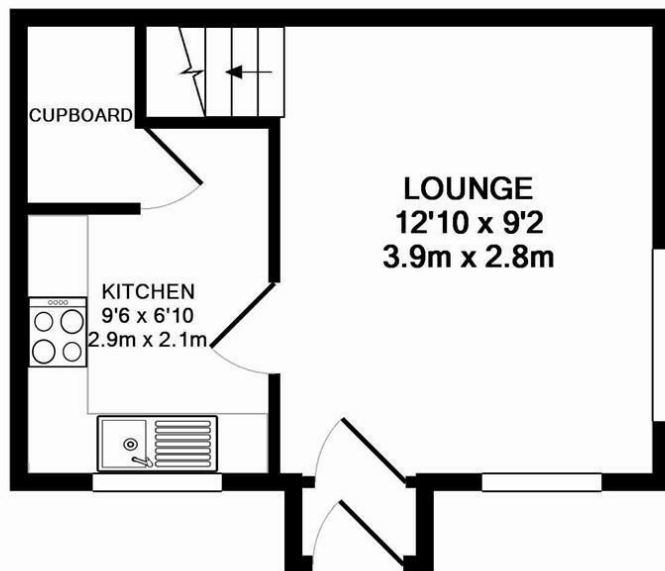


Energy Efficiency Rating		Current	Potential
<i>Very energy efficient - lower running costs</i>			
(92 plus) A			
(81-91) B			
(69-80) C			
(55-68) D			
(39-54) E			
(21-38) F			
(1-20) G			
<i>Not energy efficient - higher running costs</i>			
England & Wales	EU Directive 2002/91/EC	76	77

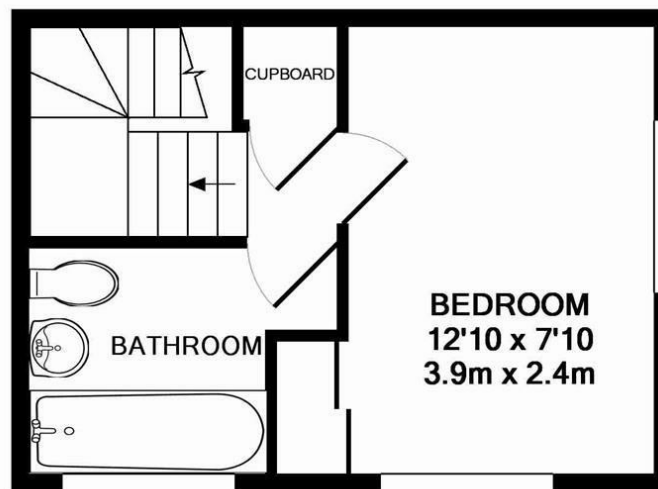
Environmental Impact (CO ₂) Rating		Current	Potential
<i>Very environmentally friendly - lower CO2 emissions</i>			
(92 plus) A			
(81-91) B			
(69-80) C			
(55-68) D			
(39-54) E			
(21-38) F			
(1-20) G			
<i>Not environmentally friendly - higher CO2 emissions</i>			
England & Wales	EU Directive 2002/91/EC	76	77







GROUND FLOOR
APPROX. FLOOR
AREA 233 SQ.FT.
(21.7 SQ.M.)



1ST FLOOR
APPROX. FLOOR
AREA 225 SQ.FT.
(20.9 SQ.M.)

TOTAL APPROX. FLOOR AREA 459 SQ.FT. (42.6 SQ.M.)

Whilst every attempt has been made to ensure the accuracy of the floor plan contained here, measurements of doors, windows, rooms and any other items are approximate and no responsibility is taken for any error, omission, or mis-statement. This plan is for illustrative purposes only and should be used as such by any prospective purchaser. The services, systems and appliances shown have not been tested and no guarantee as to their operability or efficiency can be given

Made with Metropix ©2014

