



Viewings by appointment  
0207 483 2611

abbey  
properties

# St. Johns Wood Park, NW8 6NL

£5,633 \*fees apply

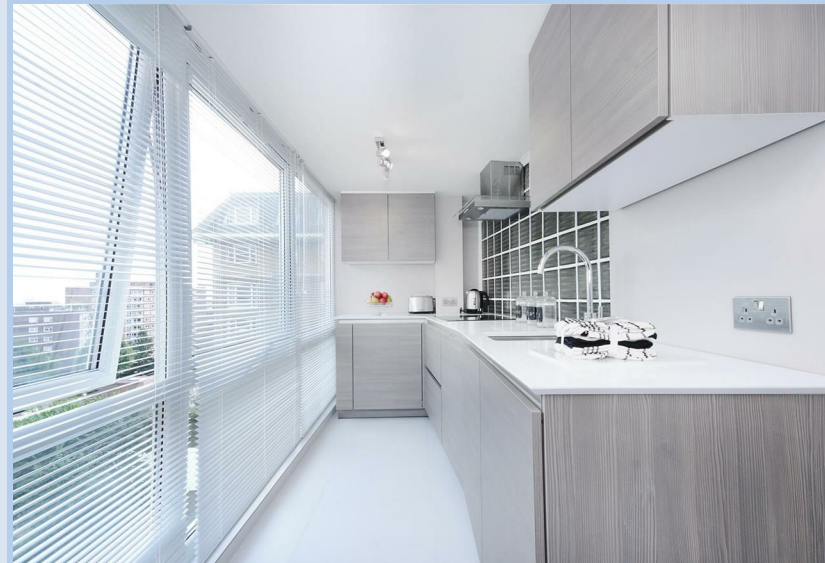


A brand newly refurbished three bedroom, three bathroom 1061sqft/995qm apartment set on the 8th floor of this elegant 24h portered mansion block with landscaped communal gardens in St John's Wood.

- Fully air conditioned
- Bespoke interior design
- Satellite (ready for sky plus and hotbird)
- Double glazed windows
- German kitchen with stone Italian worktops
- Bosch appliances, separate washer and dryer, full fridge, separate freezer
- Spacious master bedroom
- Fitted wardrobes
- Wooden flooring in the bedrooms
- Beautiful white matte tiles in kitchen and in the reception
- LED efficient lights
- Dimmable switches
- Fully tiled bathrooms with multi-jet power showers
- Spectacular views

Our agency are members of Property Mark, Client Money Protection and we hold an account with the Deposit Protection Scheme (ID number 1870974). Our trading name & registered office address is Wellington Estates Property Ltd, WorkLife, 174 Hammersmith Rd, London, W6 7JP company registration number 097780197. We charge no administration fees to tenants.

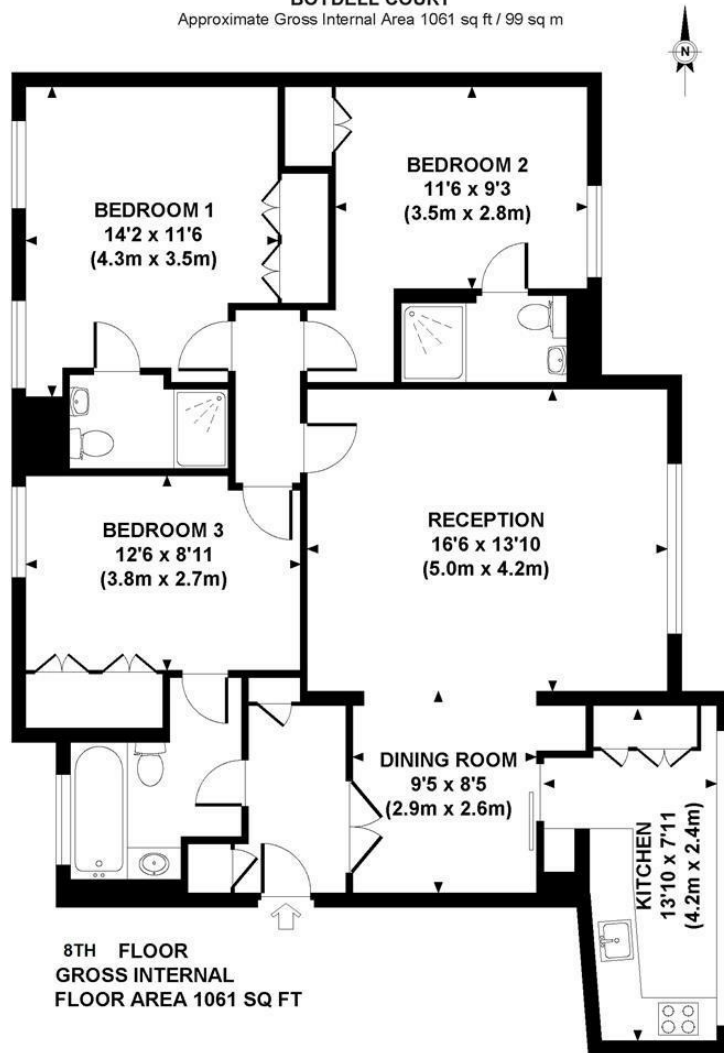
Tax Band: F  
EPC Rating: C



abbey  
properties



**BOYDELL COURT**  
Approximate Gross Internal Area 1061 sq ft / 99 sq m



Although every attempt has been made to ensure accuracy, all measurements are approximate.  
The floor plan's for illustrative purposes only and not to scale. Measured in accordance to RICS standards.  
DE-PHOTOGRAPHY.NET



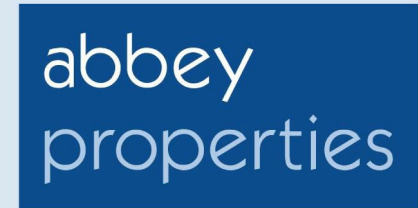
Energy Efficiency Rating			Environmental Impact (CO <sub>2</sub> ) Rating		
	Current	Potential		Current	Potential
<i>Very energy efficient - lower running costs</i>			<i>Very environmentally friendly - lower CO<sub>2</sub> emissions</i>		
(92 plus) <b>A</b>		<b>81</b>	(92 plus) <b>A</b>		
(81-91) <b>B</b>			(81-91) <b>B</b>		
(69-80) <b>C</b>			(69-80) <b>C</b>		
(55-68) <b>D</b>			(55-68) <b>D</b>		
(39-54) <b>E</b>			(39-54) <b>E</b>		
(21-38) <b>F</b>			(21-38) <b>F</b>		
(1-20) <b>G</b>			(1-20) <b>G</b>		
<i>Not energy efficient - higher running costs</i>			<i>Not environmentally friendly - higher CO<sub>2</sub> emissions</i>		
<b>England &amp; Wales</b>	EU Directive 2002/91/EC		<b>England &amp; Wales</b>	EU Directive 2002/91/EC	

Viewings by appointment  
**0207 483 2611**

7-8 Regency Parade  
London, NW3 5EG

lettings@abbeyproperties.co.uk

www.abbeyproperties.co.uk



\*All Fees stated are inclusive of VAT

(calculated at 20%)

Referencing Fee: £29.50 per applicant

Inventory/check-in fee: From £120 to £260 (dependent on the size of the property).

Administration fees: £107 per property

**Important Notice**

In accordance with the Property Misdescriptions Act (1991) we have prepared these particulars as a general guide to give a broad description of the property. They are not intended to constitute or form part of a contract. We have not carried out a structural survey and the services, appliances and specific fittings have not been tested. All measurements, photographs, virtual tours, floor plans and distances mentioned are given as a guide and should not be relied on. Details of lease, service charge and ground rent are given as a guide and should be confirmed by your solicitor prior to exchange of contracts. The copyright of these property particulars remain exclusive property of Abbey Properties.

