



Quinque

Five bedroom home | Plot 5

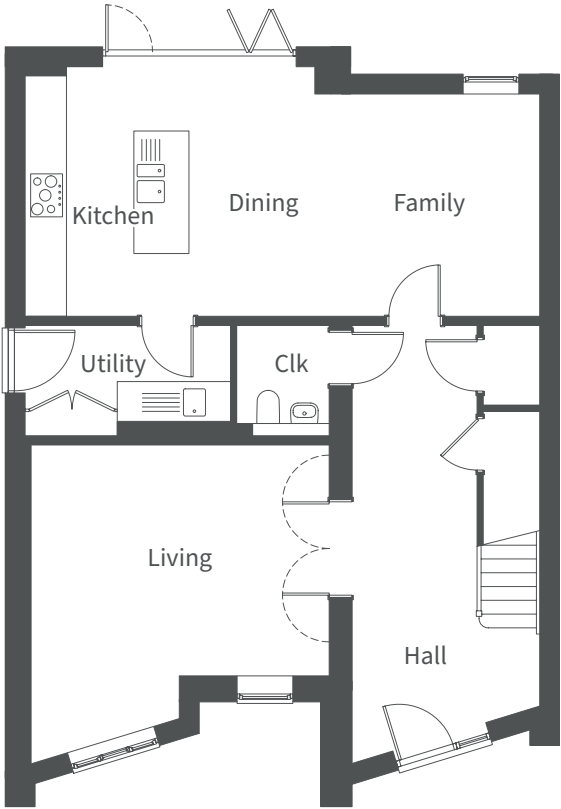
- Contemporary, elegance across three beautifully designed light-filled, spacious levels
- Expansive kitchen, dining and family space
- Bath stone contrast with the dark timber effect gable surrounds and slate roofing
- Beautiful countryside views over the River Avon valley from the first floor bedroom balcony
- Solar panels, 5.2kW battery storage and EV charger
- Efficient air source heat pump plus triple glazing for excellent thermal and acoustic insulation
- 2,276 sq ft

Quinque is a distinguished family home, seamlessly blending contemporary design with luxurious living. Externally, the textured Bath stone and timber-style finish beautifully contrast with the dark framed glazing and striking, geometric rooflines, creating a bold, modern statement. Three parking spaces are provided with an EV charge point located under the first floor balcony area. The spacious entrance hall, with cloakroom and understair storage, connects a bright, inviting living room space to the generous family / dining space and kitchen / utility room. The kitchen features a central island and bi-fold doors open to the rear garden.

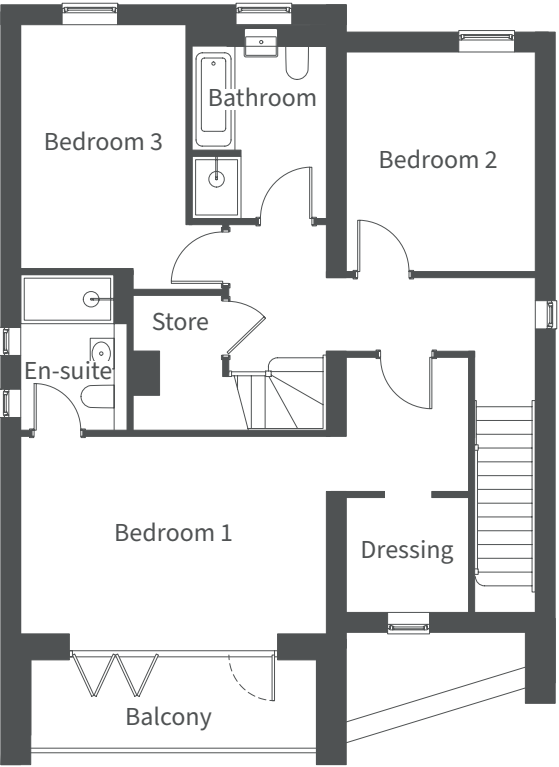
The first floor hosts a main bedroom with a dressing area and en-suite, two further bedrooms and a family bathroom. The second floor offers two bedrooms, separated by a modern shower room. Roof lights further enhance the bright, welcoming atmosphere.

Quinque is designed for exceptional riverside living, balancing comfort, style, and practicality.

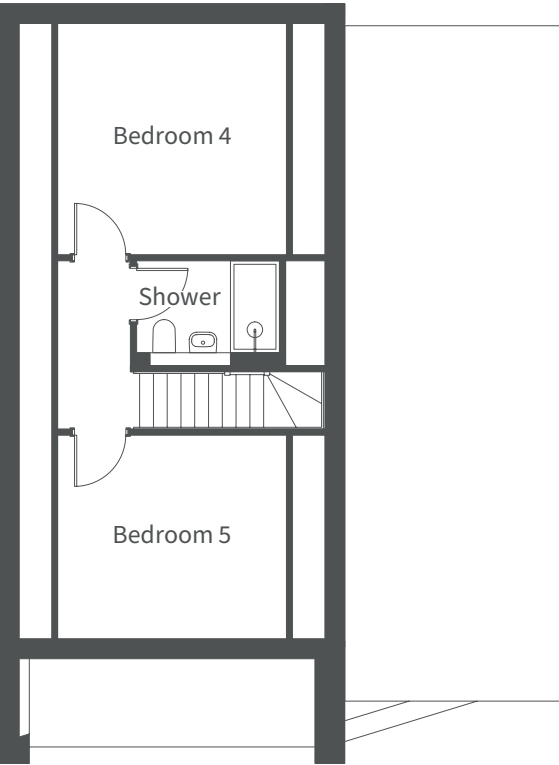
NOTE: Plot 5 is featured in the above CGI



Ground Floor	Millimetres	Feet / inches
Living	5180 x 4865	16'12" x 15'12"
Kitchen / Dining / Family	8350 x 4050	27'5" x 13'3"
Utility	3325 x 1565	10'11" x 5'2"



First Floor	Millimetres	Feet / inches
Bedroom 1	4955 x 3225	16'3" x 10'7"
En-suite	2535 x 1500	8'4" x 4'11"
Dressing room	1970 x 1850	6'6" x 6'1"
Bedroom 2	3560 x 3035	11'8" x 9'11"
Bedroom 3	4280 x 3270	14'1" x 10'9"
Bathroom	2800 x 2165	9'2" x 7'1"



Second Floor	Millimetres	Feet / inches
Bedroom 4	3750 x 3705	12'4" x 12'2"
Bedroom 5	3705 x 3300	12'2" x 10'10"
Shower room	2330 x 1500	7'8" x 4'11"

NOTE: Other floor plans and elevations for each property are available. Sizes are maximums. As each house is built individually, dimensions shown may vary +/- 50mm and the internal finishes may not always be the same. External finishes, materials, landscaping, positions and colours of windows and garages (where applicable) may also vary. Properties can also be constructed as mirror images of that shown. Please ask if you require further details or clarification.