



# Solace

Five bedroom home | Plot 7

- A contemporary sanctuary
- Corner feature window
- Expansive open plan kitchen/dining/living space
- Plain tile roof, façade combines render and brick, with metal standing seam finish to rear ground floor and first floor core
- First floor terrace to bedrooms 1 and 2 with amazing countryside views
- Garage with external 7kw EV charger and room above garage via personnel door/internal stairs
- Solar panels with optional battery storage

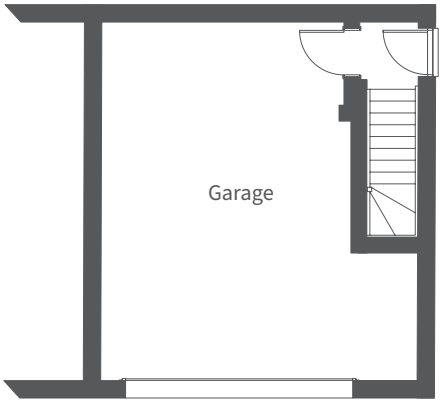
3,075 sq ft

Solace, a name that evokes peace and refined comfort, perfectly suits this contemporary home with future-ready luxury features.

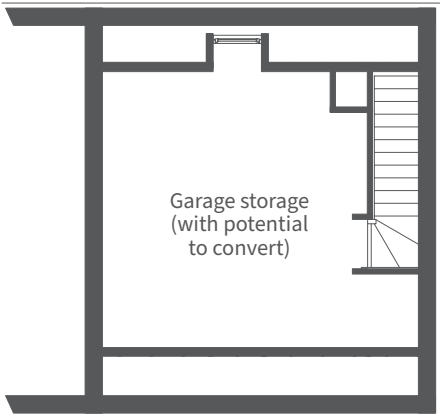
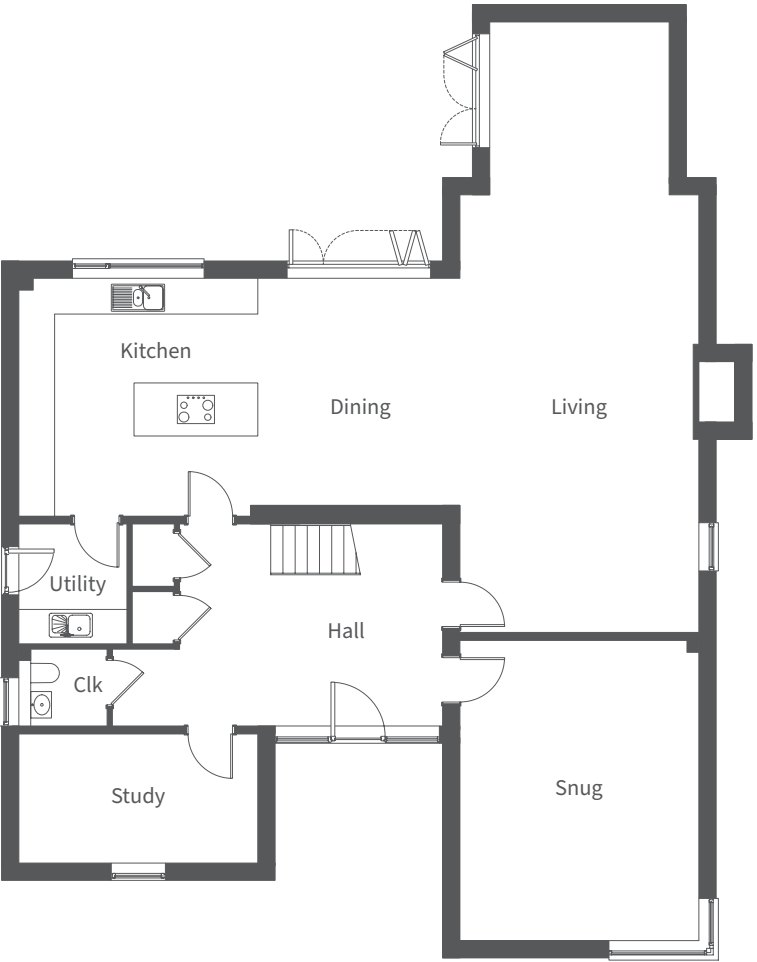
This home creates a striking visual impact, featuring a double front gable paired with a contrasting flat-roofed element. The design masterfully blends traditional architectural details with clean, modern lines. Between the two gables lies a flat roof section, finished with standing seam metal surface, adding a contemporary touch that beautifully contrasts with the pitched roofs.

The recessed entrance, framed by large sidelight windows, and the corner feature window flood the interior with natural light, for a welcoming atmosphere. Inside, the expansive open-plan kitchen, dining, and living space features quartz worktops and integrated appliances including a wine cooler. A private terrace for both bedrooms 1 and 2 offers amazing countryside views. The garage leads to a room above via a set of stairs.

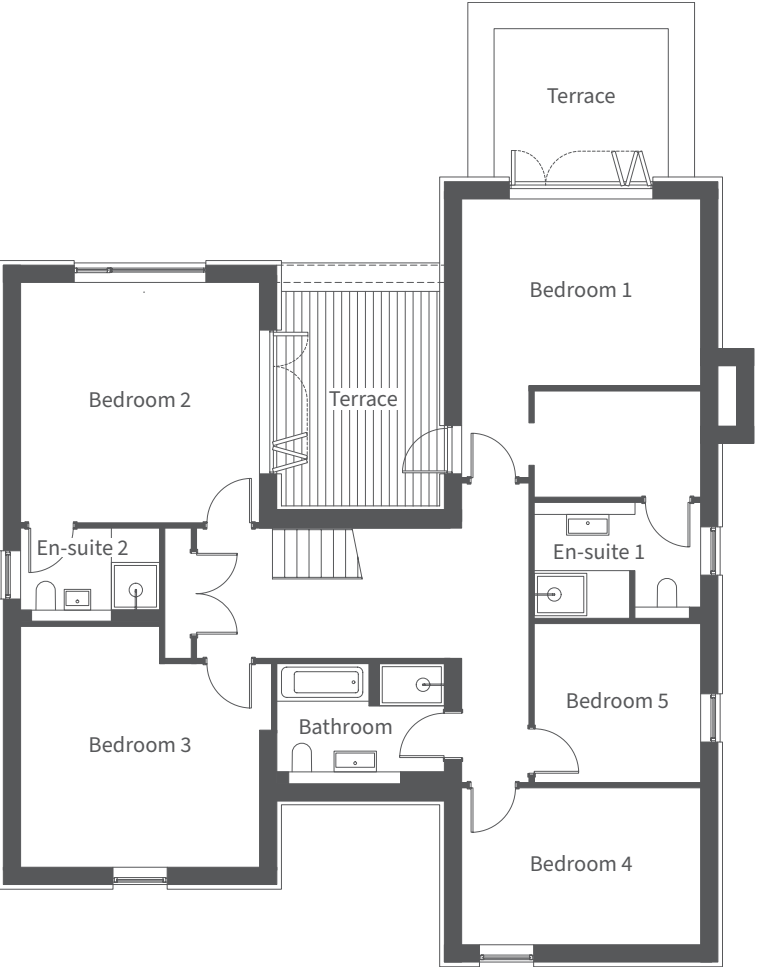
NOTE: Plot 7 is featured in the above CGI



Ground Floors	Millimetres	Feet / inches
Living	11495 x 4460	37'9" x 14'8"
Kitchen / Dining	8325 x 4460	27'4" x 14'8"
Snug	5640 x 4460	18'6" x 14'8"
Study	4460 x 2435	14'8" x 7'12"
Utility	2260 x 2015	7'5" x 6'7"
Cloakroom	1640 x 1424	5'5" x 4'8"
Garage	5970 x 5720	19'7" x 18'9"
Garage store	1605 x 965	5'3" x 3'2"



First Floors	Millimetres	Feet / inches
Bedroom 1	4460 x 3500	14'8" x 11'6"
Dressing room	3115 x 2000	10'3" x 6'7"
En-suite 1	3115 x 2185	10'3" x 7'2"
Bedroom 2	4460 x 4510	14'8" x 14'10"
En-suite 2	2595 x 1755	8'6" x 5'9"
Bedroom 3	4460 x 4510	14'8" x 14'10"
Bedroom 4	4460 x 2935	14'8" x 9'8"
Bedroom 5	3115 x 2945	10'3" x 9'8"
Bathroom	3110 x 2240	10'2" x 7'4"
Garage storage	5945 x 3825	19'6" x 12'7"



NOTE: Other floor plans / elevations are available. Sizes are maximums. As each house is built individually, dimensions shown may vary +/- 50mm and the internal finishes may not always be the same. External finishes, materials, landscaping, positions and colours of windows and garages (where applicable) may also vary. Properties can also be constructed as mirror images of that shown. Please ask for further details.