



Elysian

Four bedroom home | Plot 6

- Bold modern architectural style
 - Three storey elevated living
 - Double-height oriel window (plot 6)
 - Slate roof, façade of vertical timber-style slats to the upper floor and brick to the ground floor
 - Double garage with external 7kw EV charger and room above garage via personnel door/ internal stairs
 - Terraced gardens with turfed lawns
 - Solar panels with optional battery storage
- 2,898 sq ft

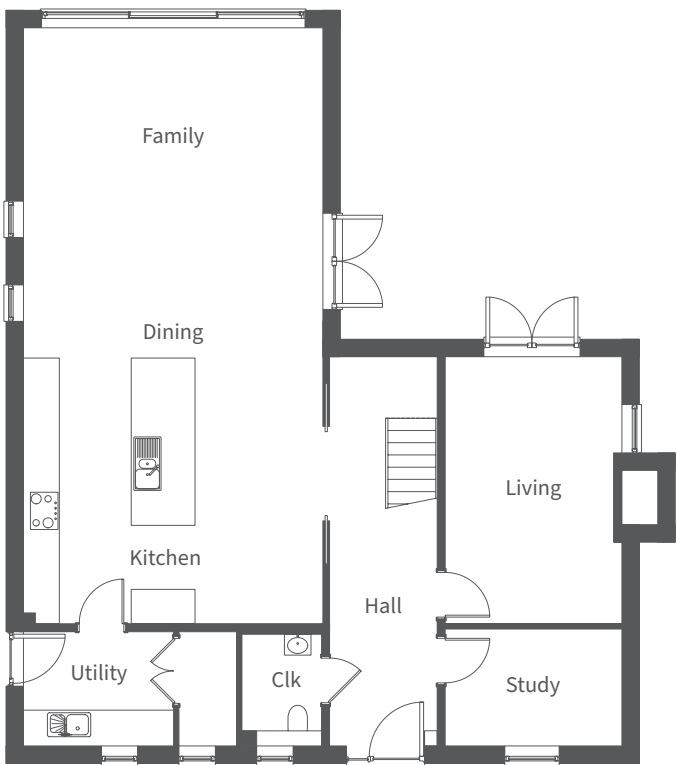
The Elysian is a striking three-storey, 4 bedroom home featuring a recessed roof terrace and a double-height oriel window which extends outward from the façade, creating a dramatic focal point.

Inside, high-end features include a “waterfall” kitchen island, spacious living areas, and luxurious bedrooms with private terrace to bedroom 1, creating an ideal balance of style and function. The first-floor main bedroom features dressing room plus a walk-in shower with feature led lighting. Roof terrace is recessed into the gable, creating a sheltered outdoor space that blends seamlessly with the architecture. This design feature adds depth to the gable façade while maintaining the traditional pitched roof profile, merging classic and contemporary styles.

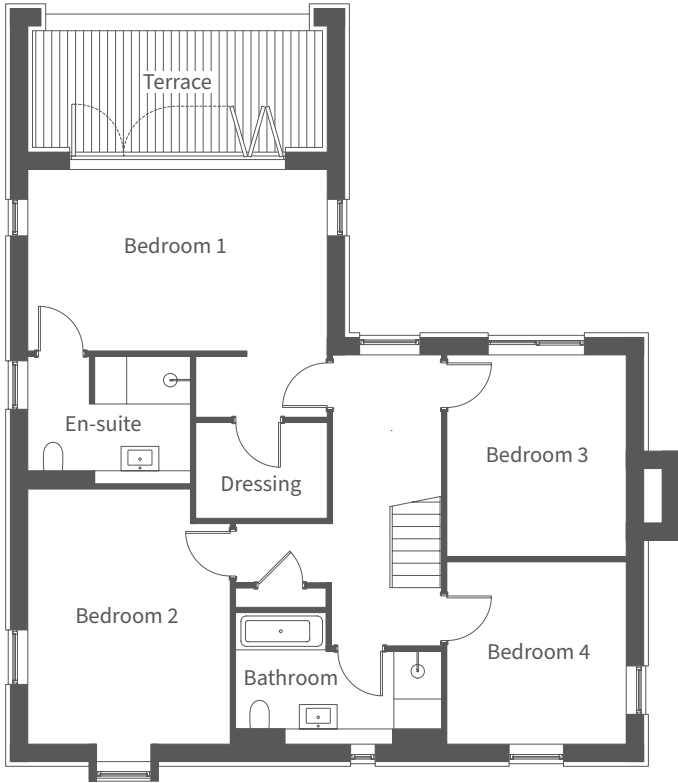
Den with shower room/ WC plus games room are located on the second floor. Study room above double garage (with store) and parking spaces.

Paving connects to the enclosed terraced rear garden.

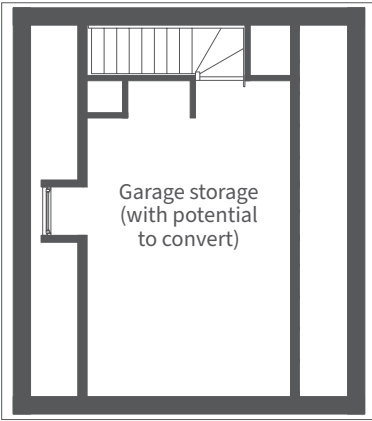
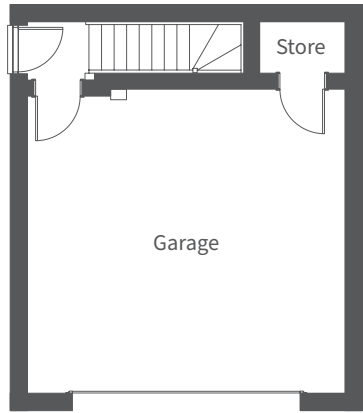
NOTE: Plot 6 is featured in the above CGI



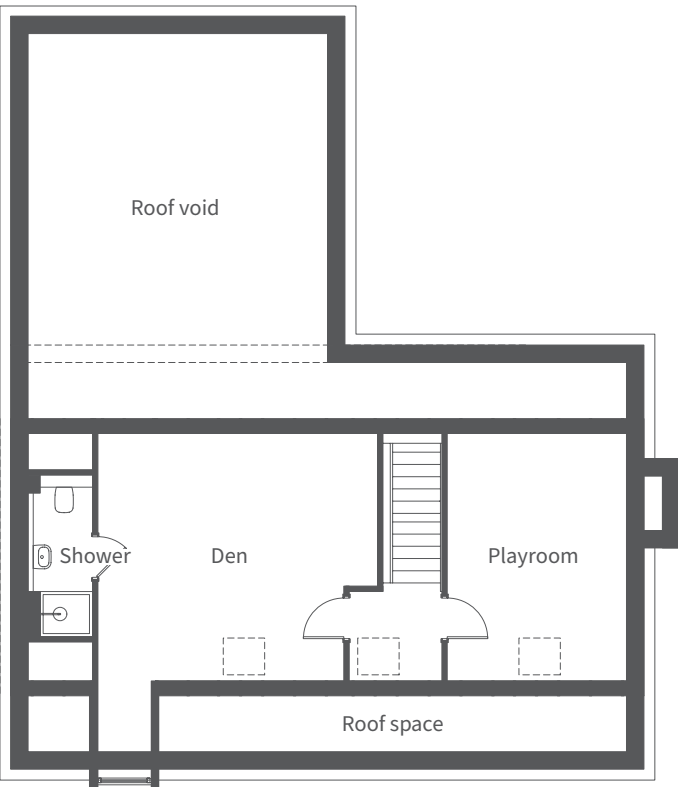
Ground Floor	Millimetres	Feet / inches
Kitchen / Dining / Family	11185 x 5585	36'8" x 18'4"
Living	4995 x 3300	16'5" x 10'10"
Study	3300 x 2175	10'10" x 7'2"
Utility	2815 x 2125	9'3" x 6'12"
Cloakroom	2125 x 1070	6'12" x 3'6"



First Floor	Millimetres	Feet / inches
Bedroom 1	5585 x 4635	18'4" x 15'2"
Dressing room	2450 x 1800	8'0" x 5'11"
En-suite	3035 x 2395	9'11" x 7'10"
Bedroom 2	4775 x 3785	15'8" x 12'5"
Bedroom 3	3765 x 3350	12'4" x 10'12"
Bedroom 4	3405 x 3350	11'2" x 10'12"
Bathroom	3875 x 2450	12'9" x 8'0"



Garage	Millimetres	Feet / inches
Garage	5970 x 5720	19'7" x 18'9"
Garage store	1605 x 965	5'3" x 3'2"
Garage storage	5945 x 3825	19'6" x 12'7"



Second Floor	Millimetres	Feet / inches
Den	5255 x 4495	17'3" x 14'9"
Playroom	4495 x 3350	14'9" x 10'12"
Shower room	3035 x 1195	9'11" x 3'11"

NOTE: Other floor plans / elevations are available. Sizes are maximums. As each house is built individually, dimensions shown may vary +/- 50mm and the internal finishes may not always be the same. External finishes, materials, landscaping, positions and colours of windows and garages (where applicable) may also vary. Properties can also be constructed as mirror images of that shown. Please ask for further details.