



20 Richmond Drive, Grantham
Grantham

£595,000

DavidGrace





20 Richmond Drive

Grantham, Grantham

Spacious five-bed executive home on Barrowby Lodge with generous living areas, five double bedrooms, modern finishes, and a sunny garden – perfect for growing families seeking comfort and style.

Council Tax band: F

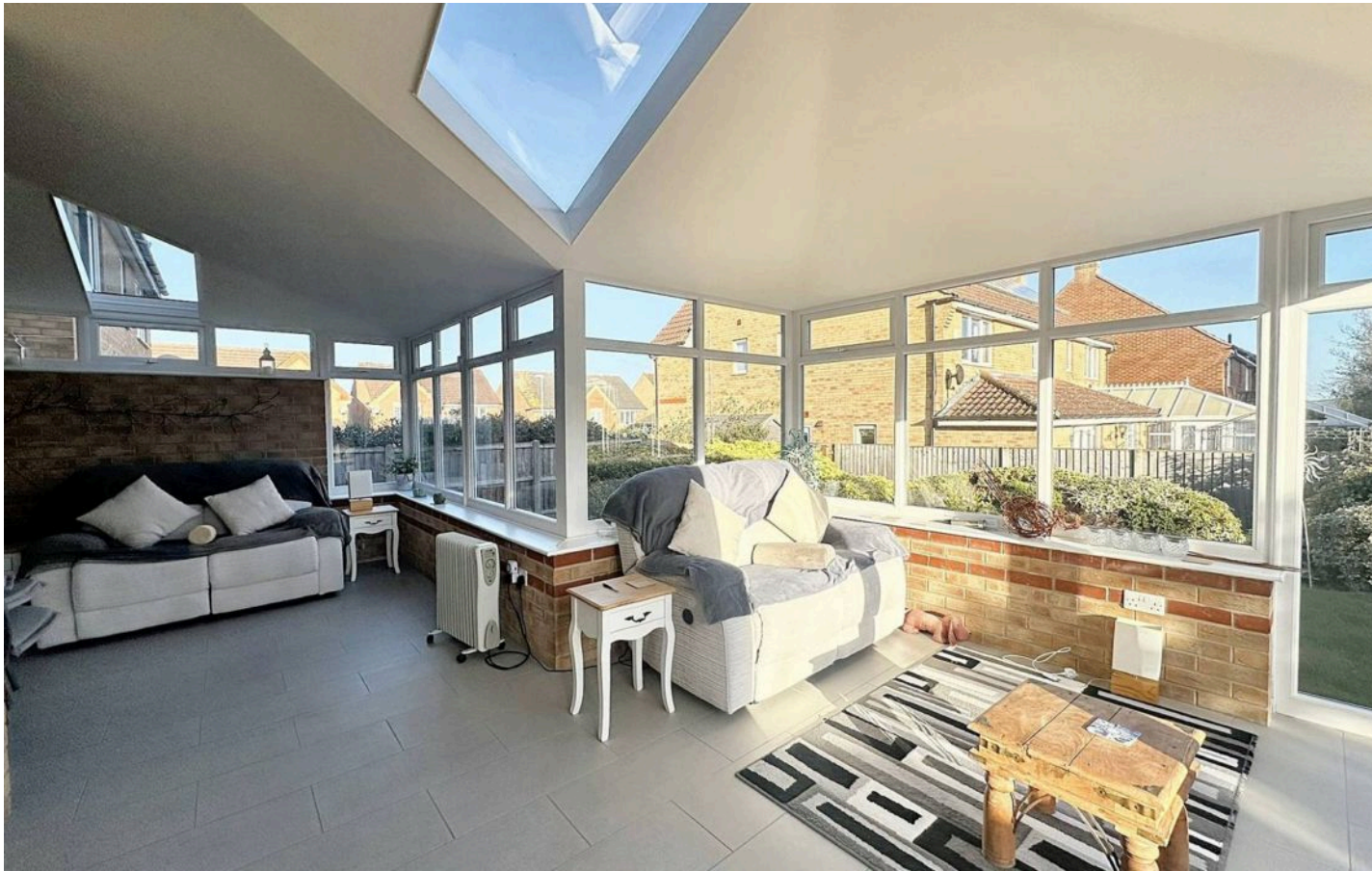
Tenure: Freehold

EPC Energy Efficiency Rating: B

EPC Environmental Impact Rating: B

- Desirable Location on the Barrowby Lodge Estate
- Large Kitchen/Diner
- Spacious Living Room, Study and Utility Room
- Large Wrap-Around Sun Room
- Primary Suite with Walk-In Wardrobe and En-Suite
- 5 Double Bedrooms and 3 Bathrooms
- Two Family Bathrooms and Downstairs WC
- Double Garage and Driveway Parking
- South-East Facing Garden
- EPC – tbc

DavidGrace



Entrance Hall

Living Room

14' 4" x 16' 0" (4.37m x 4.88m)

Kitchen/Diner

34' 6" x 13' 3" (10.51m x 4.05m)

Sun Room

20' 7" x 13' 3" (6.27m x 4.05m)

Utility Room

8' 10" x 5' 7" (2.68m x 1.69m)

Study

12' 7" x 10' 5" (3.84m x 3.18m)

WC

3' 10" x 5' 7" (1.16m x 1.69m)

Landing

Bedroom 1

14' 4" x 16' 8" (4.37m x 5.09m)

Dressing Room

4' 8" x 10' 4" (1.41m x 3.16m)

Ensuite

7' 6" x 10' 4" (2.28m x 3.16m)

Bedroom 2

12' 7" x 12' 5" (3.84m x 3.79m)

Bedroom 3

12' 2" x 10' 4" (3.71m x 3.16m)

Bathroom 1

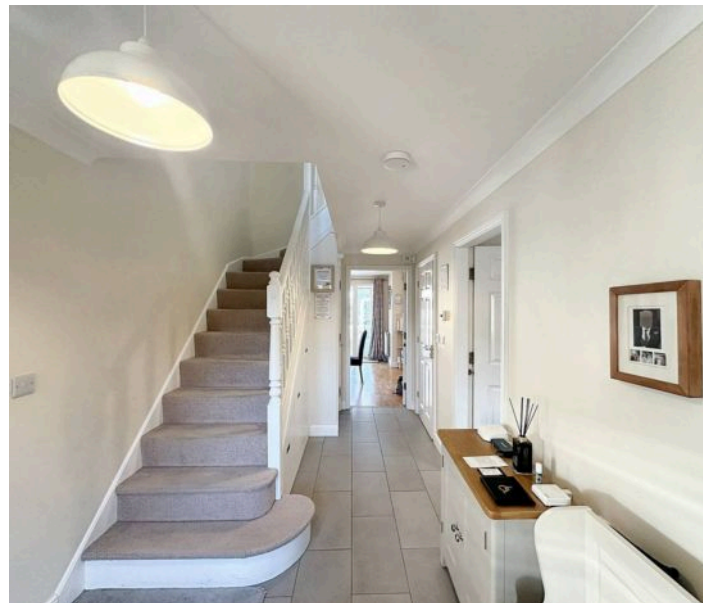
8' 0" x 10' 4" (2.43m x 3.16m)

Landing

Bedroom 4

14' 9" x 17' 5" (4.49m x 5.31m)

Bedroom 5



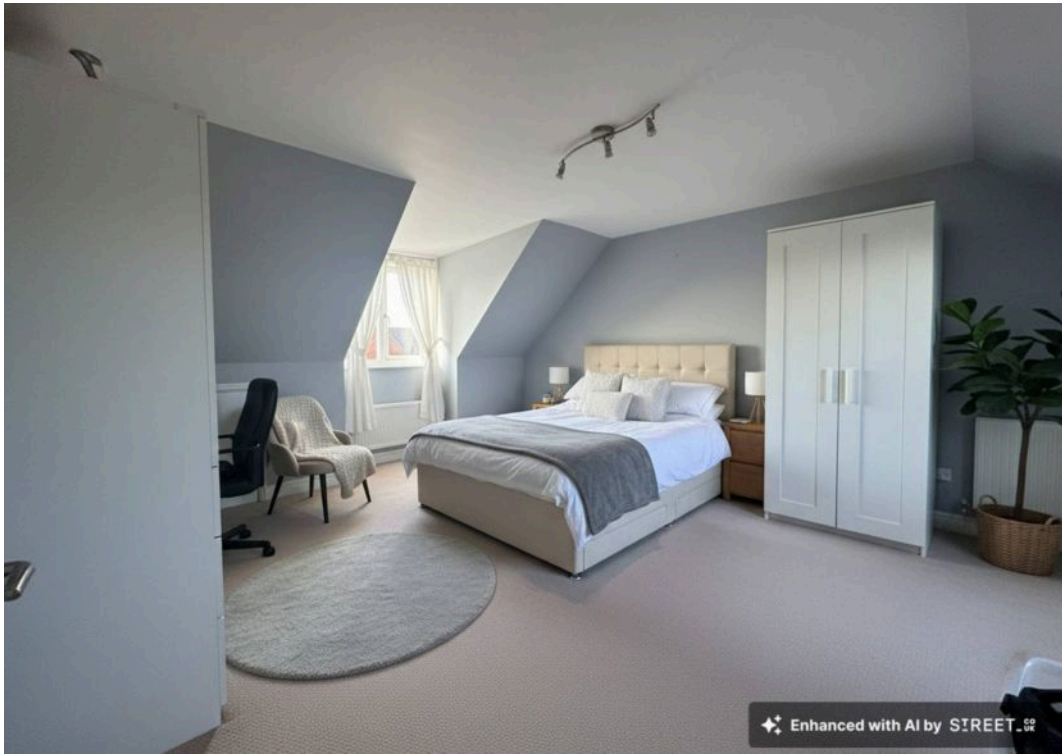


GARDEN

DOUBLE GARAGE









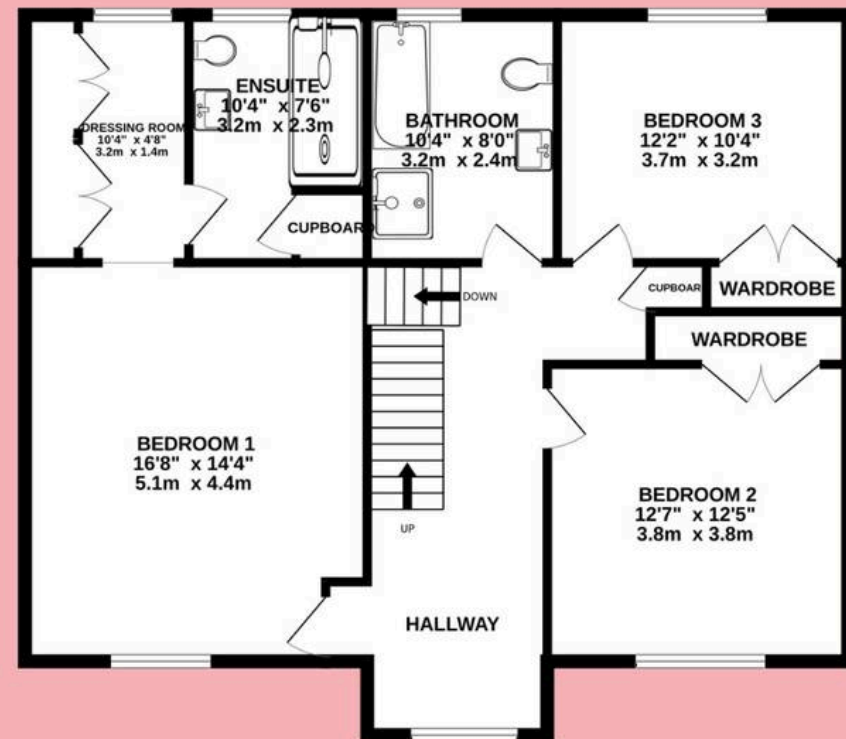
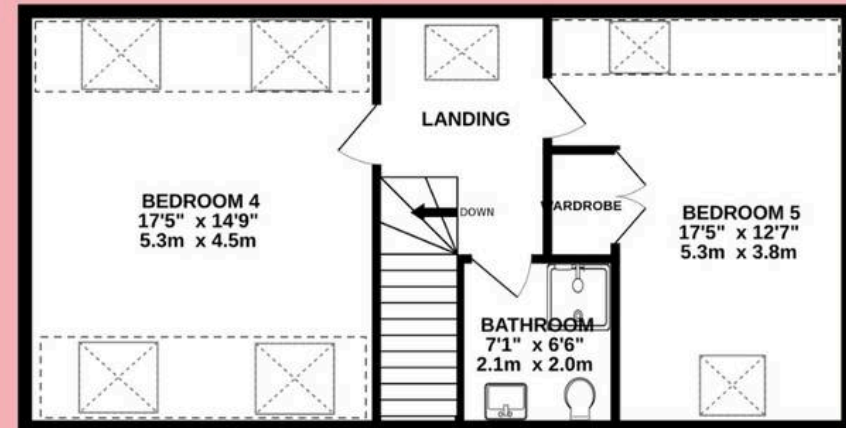
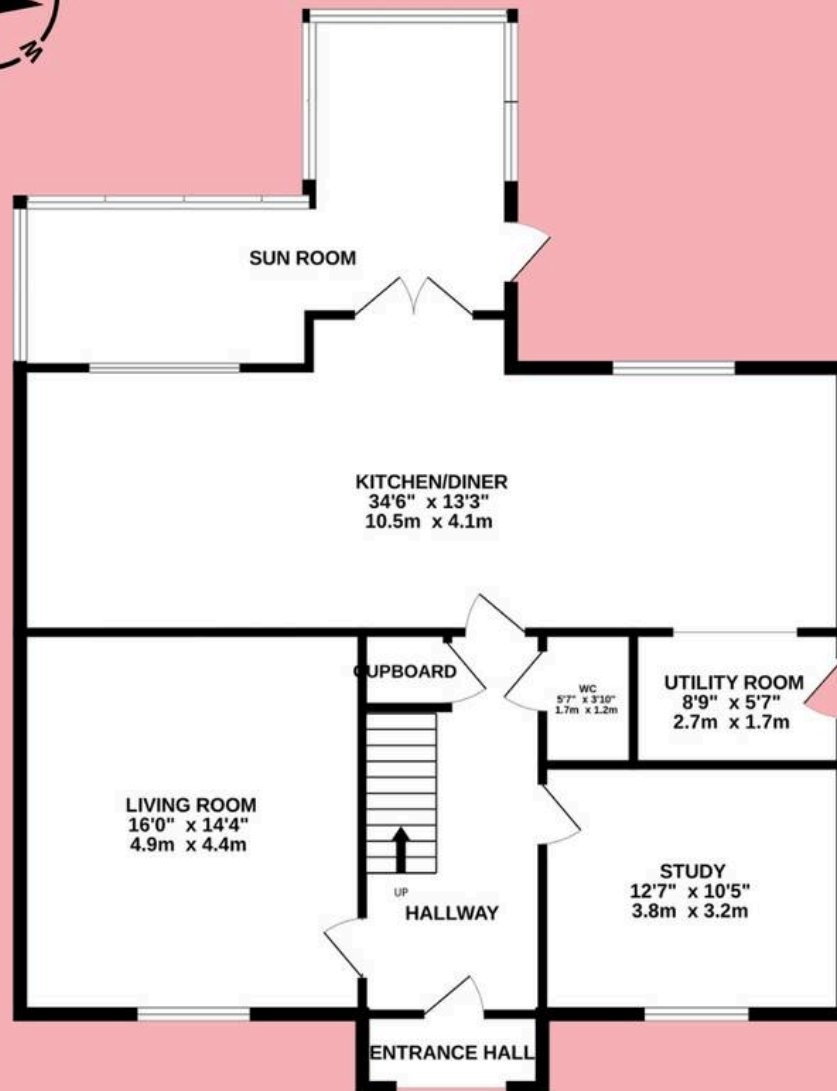


Richmond Drive, Grantham

Approx Internal area: 2,723 sq ft/ 253 m²

DavidGrace

A NEWTON FAMILY ESTATE AGENCY





David Grace Estate Agents

71 High Street, Grantham - NG31 6NR

01476 833833 • sell@davidgrace.co.uk • www.davidgrace.co.uk

DavidGrace