



1 St Mary's Court, School Lane, Old Somerby
Grantham

£495,000

DavidGrace





1 St Mary's Court, School Lane

Old Somerby, Grantham

Design your dream home with this 3-bed detached bungalow in Old Somerby. Spacious, modern, and energy-efficient with air source heat pump, large garden, and double garage. Council Tax band: TBD

Tenure: Freehold

- Detached Bungalow in Old Somerby
- Air Source Heat Pump for Energy Efficiency
- Open-Plan Kitchen and Living Area with Open Fire
- Bedroom 1 with En-Suite and Built-in Wardrobes
- Two Spacious Double Bedrooms and A Single
- Family Bathroom and Separate WC
- Large Double Garage
- Wrap-Around Garden and Outdoor Potential
- Potential to change the layout and put your own stamp on the property

DavidGrace



Entrance Hall

Kitchen/Diner

25' 7" x 14' 9" (7.80m x 4.50m)

Utility Room

Living Room

25' 7" x 12' 10" (7.80m x 3.90m)

Bedroom 1

15' 1" x 15' 1" (4.60m x 4.60m)

En-suite

Bedroom 2

15' 5" x 15' 1" (4.70m x 4.60m)

Bedroom 3

10' 10" x 6' 7" (3.30m x 2.00m)

Bathroom

10' 10" x 6' 7" (3.30m x 2.00m)





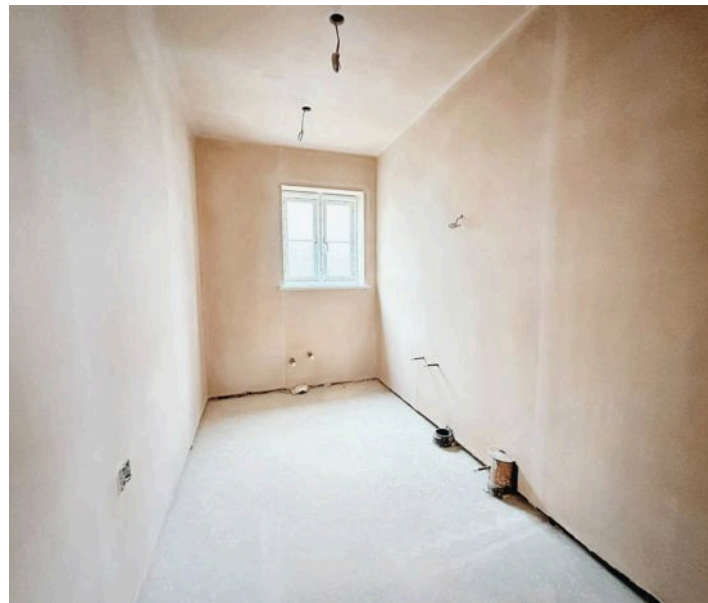
GARDEN

GARAGE

Double Garage

DRIVEWAY

3 Parking Spaces

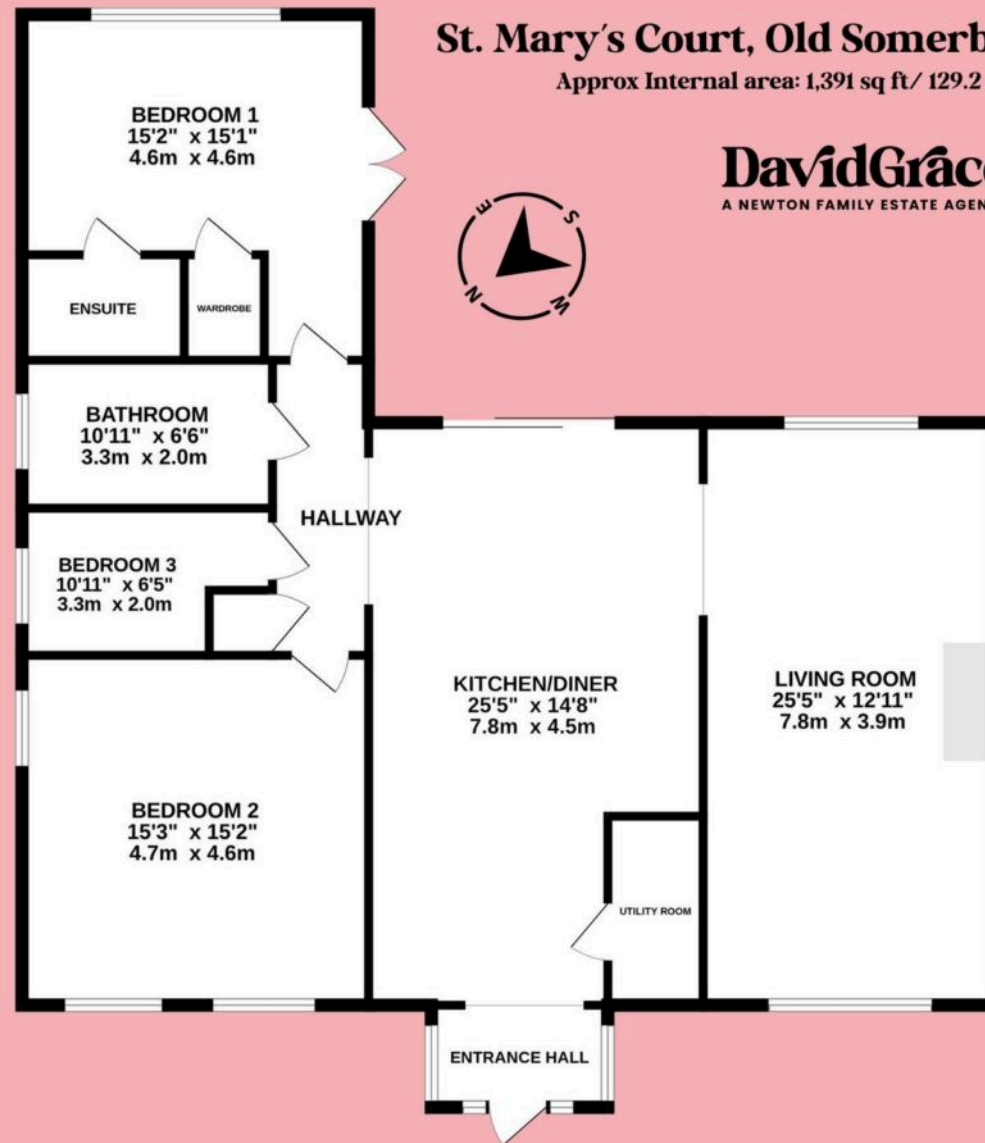




St. Mary's Court, Old Somerby

Approx Internal area: 1,391 sq ft/ 129.2 m²

DavidGrace
A NEWTON FAMILY ESTATE AGENCY



David Grace Estate Agents

71 High Street, Grantham - NG31 6NR

01476 833833 • sell@davidgrace.co.uk • www.davidgrace.co.uk

DavidGrace