





## Manchester Street, Marylebone W1U

£1,350,000

🛏 2 🚿 2 🛋 1

- Two Bedrooms
- Two Bathrooms
- Long Lease - 164 years remaining
- Prime Marylebone Location
- Period
- Communal Patio area



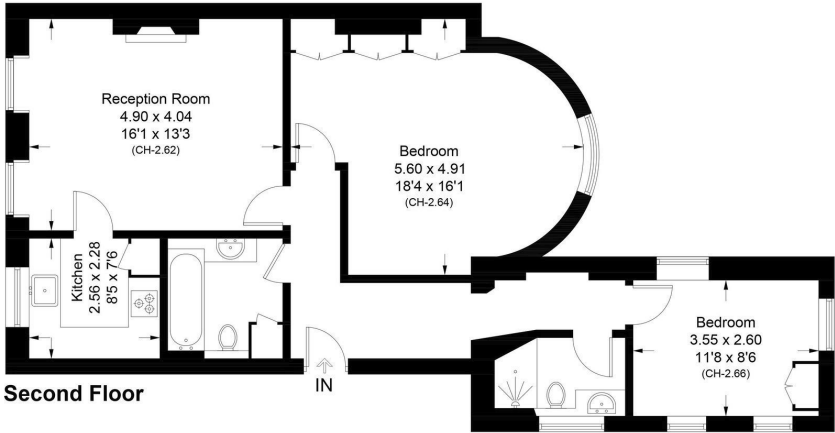
A two bedroom, two bathroom apartment located in prime Marylebone Village. Situated on the second floor of this period conversion, this two bedroom apartment is a must see. Spanning just over 850 sq ft, it offers a bright west-facing reception room with two large windows and a feature fireplace, with a modern and separate kitchen located just off the reception room.

As you leave the reception room, you have a generous sized master bedroom with lots of built-in storage and a lovely bay window with green views of Paddington Gardens. There are two bathrooms, one has a walk-in shower and the other has a bath with an overhead shower. The second bedroom is also located at the rear of the property with garden views. The building also offers a private resident's patio area.





Manchester Street, W1U  
Approximate Area = 79.4 sq m / 855 sq ft



Surveyed and drawn in accordance with the International property measurements standards (IPMS 2: Residential) Not drawn to scale unless stated.  
Whilst every care is taken in the preparation of this plan, please check all dimensions, shapes and compass bearings before making any decisions reliant upon them.

