



11 Green Drive, Poulton-Le-Fylde

Poulton-Le-Fylde

Offers Over **£300,000**

11 Green Drive

Poulton-Le-Fylde, Poulton-Le-Fylde

Nestled within a quiet residential area, this charming two-bedroom detached bungalow offers a peaceful retreat within close proximity to the sought-after town of Poulton-Le-Fylde. Upon entering, a welcoming hallway guides you into the spacious lounge featuring an elegant electric fireplace and captivating bay windows, creating a warm and inviting ambience. The heart of the home lies in the modern open plan kitchen/dining room, complete with a stylish ceramic sink and a patio door that seamlessly connects the interior with the landscaped rear garden. Bedroom one boasts sliding fitted wardrobes for ample storage, while a pristine three-piece suite bathroom exudes comfort and sophistication. Step outside to discover the enclosed south-facing rear garden, offering a tranquil sanctuary with side access for added convenience. The property further benefits from a driveway providing parking for multiple vehicles and a brick-built garage with a pitched roof, catering to all your storage needs. This desirable home is conveniently located near local amenities, transportation links, and reputable schools, ensuring a life of convenience and comfort. Offered with no onward chain, this property presents a rare opportunity to secure a peaceful and well-connected lifestyle.

Council Tax band: D

Tenure: Freehold

- Two Bedroom Detached Bungalow Within Quiet Residential Area Within Close Proximity To Poulton-Le-Fylde
- Hallway, Lounge With Electric Fireplace And Bay Windows, Modern Open Plan Kitchen/ Dining Room With Ceramic Sink And A Patio Door Providing Access To The Rear Garden
- Bedroom One Benefits From Sliding Fitted Wardrobes, Three Piece Suite Bathroom
- Enclosed South Facing Rear Garden With Side Access
- Driveway With Parking For Multiple Vehicles And Brick Built Garage With Pitched Roof
- Close To Local Amenities, Transportation Links And Schools
- No Onward Chain





Entrance Vestibule

Hallway

Lounge

11' 5" x 16' 11" (3.48m x 5.16m)

Kitchen/ Dining Room

15' 11" x 11' 0" (4.84m x 3.35m)

Bedroom 1

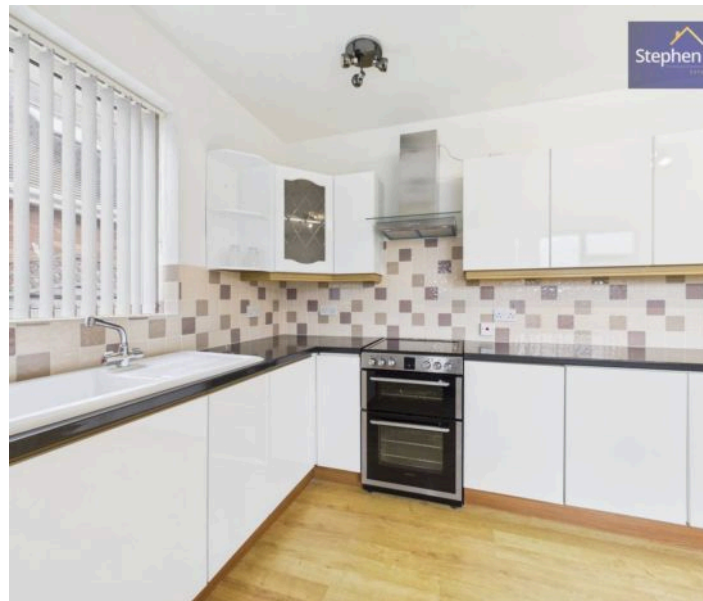
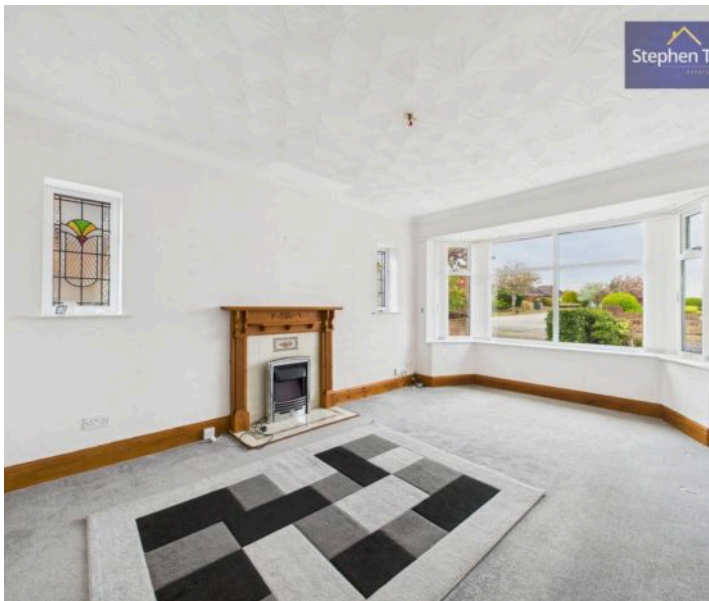
9' 0" x 12' 11" (2.75m x 3.93m)

Bedroom 2

11' 0" x 12' 0" (3.35m x 3.65m)

Bathroom

8' 3" x 8' 6" (2.51m x 2.58m)





Entrance Vestibule

Hallway

Lounge

11' 5" x 16' 11" (3.48m x 5.16m)

Kitchen/ Dining Room

15' 11" x 11' 0" (4.84m x 3.35m)

Bedroom 1

9' 0" x 12' 11" (2.75m x 3.93m)

Bedroom 2

11' 0" x 12' 0" (3.35m x 3.65m)

Bathroom

8' 3" x 8' 6" (2.51m x 2.58m)







FRONT GARDEN

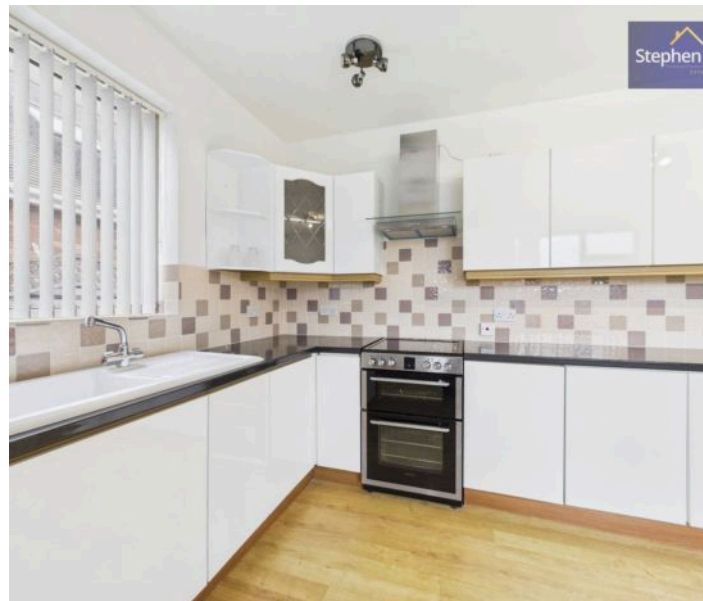
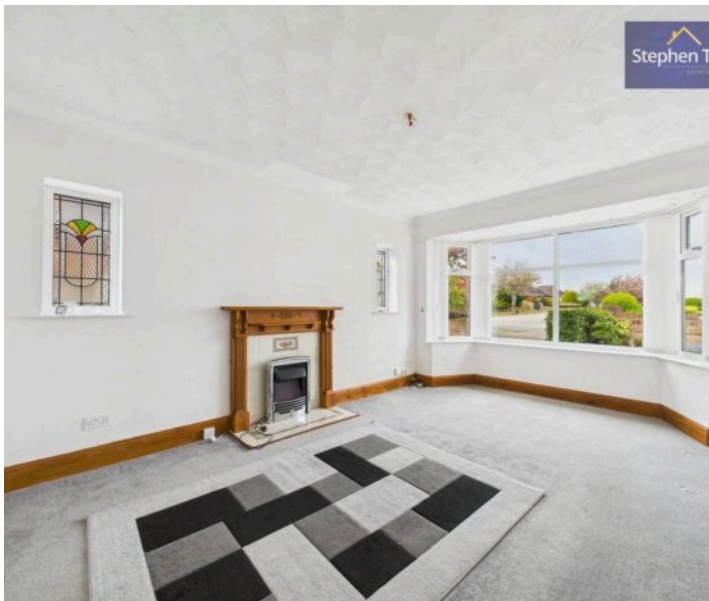
REAR GARDEN

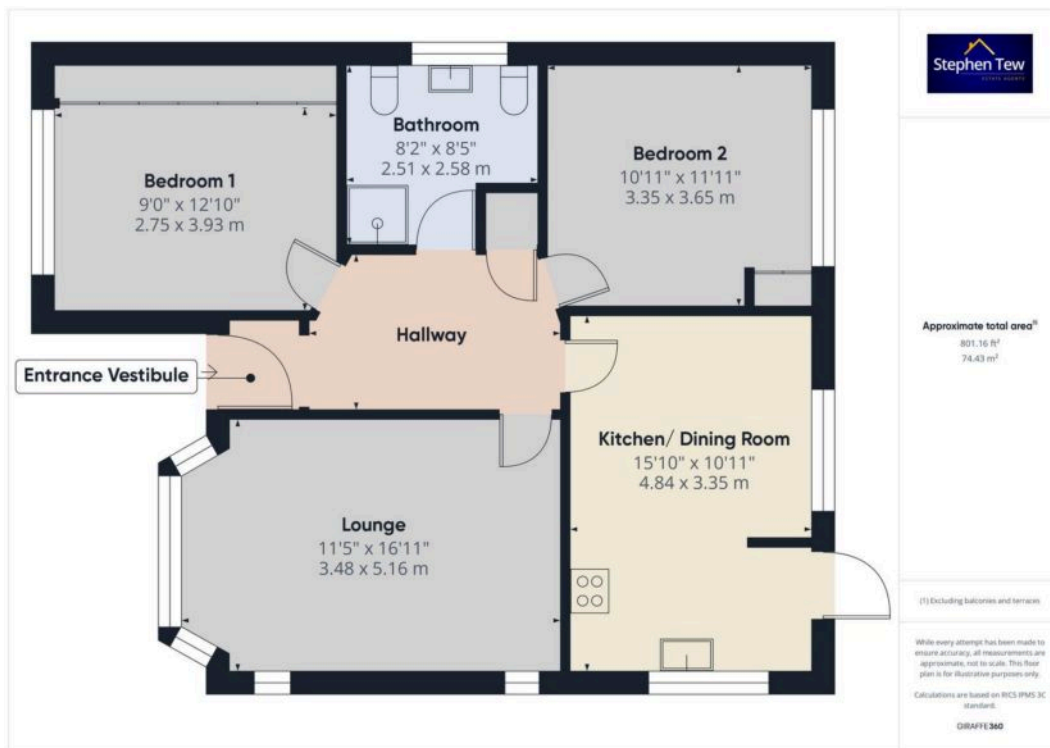
GARAGE

Single Garage

DRIVEWAY

3 Parking Spaces







Stephen Tew Estate Agents

1b Queens Square, Poulton-le-Fylde - FY6 7BW

01253 401111

info@stephentew.co.uk

www.stephentew.co.uk/

