




SrtCnt : 803, DiffTime : 33ms
2025-04-16 14:58:49.123


[x : 120] [shutter : 1/4000.0] [iso : 170] [ev : 0] [cf : 45.5] [color_md : default] [focal_len : 240] [zoom_ratio : 0.991] [pitch : 0] [roll : 0] [altitude : 16.61325] [longitude : 52.927015] [latitude : 20.455] [alt : 16.437]





Paradise Beach: 3 Bed Poolside Townhouse

Garden Patio & Roof Terrace


3


2


176

 Condo Fees
c. 2,500 pa

OIRO 175,000 Euros

What a gorgeous townhouse this is, in the quiet resort of Paradise Beach on the west coast of Sal. With almost 180 square metres of meticulously planned and constructed accommodation, this is an ideal family holiday home or rental, or indeed permanent residence.

Positioned close to the beach and next to a pool, this 3-bedroom house is nothing short of spectacular. Perfect for indoor-outdoor living, there are 66 square metres of outside terraces to enjoy, with the choice of all-day sunshine or shade from the trees.

Designed to maximise the views and the outdoor space, the accommodation comprises, from the front door:

- Hallway opening out onto:
- Fully-fitted kitchen, inc. dishwasher, large fridge-freezer and washing machine
- Lockable doors to downstairs fully-accessible bathroom with shower
- Downstairs double bedroom, with direct access to the large terrace and gardens
- To your right: large understairs cupboard, with room enough for bikes, fishing or surfing gear then
- Dining area – table and chairs - with lights above
- Large lounge area including two sofas, tv and patio doors to
- Large outside terrace with patio furniture, garden and pool views
- Stairs and vaulted ceilings leading up to
- Fully tiled family bathroom complete with walk in large shower
- Double bedroom with floor-to-ceiling wardrobes, with patio doors opening out to huge sunny roof terrace
- Hallway with further exit to the roof terrace
- Twin bedroom with excellent storage, also with sliding patio doors opening out to the roof terrace.

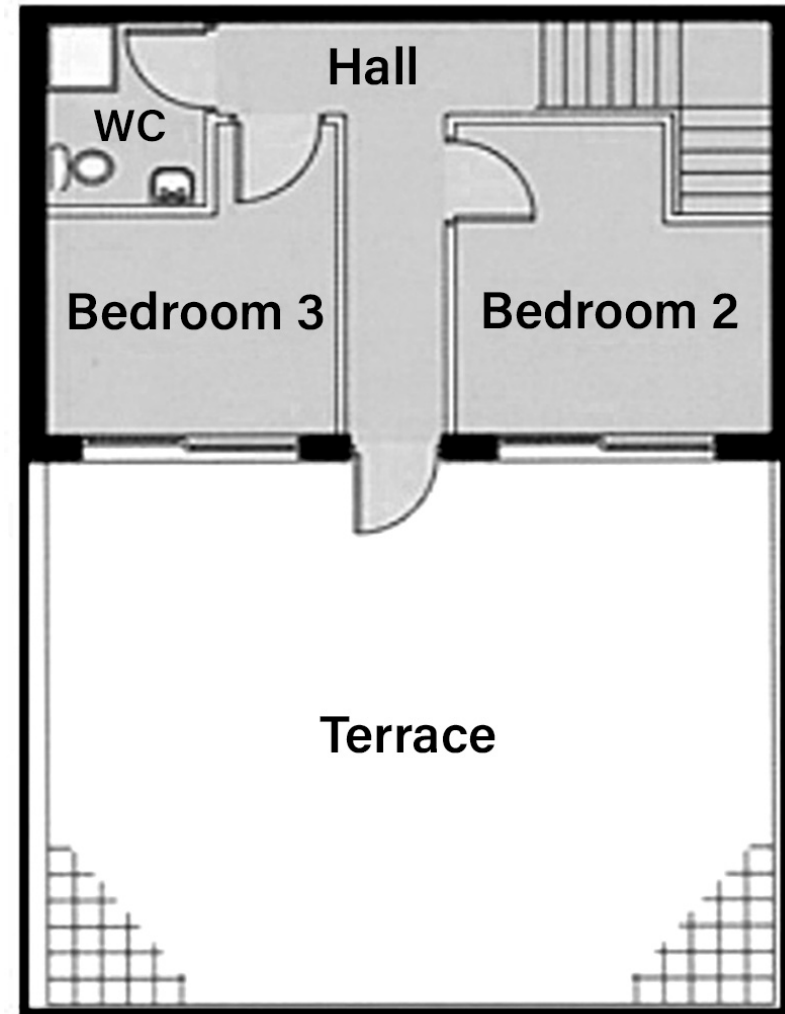
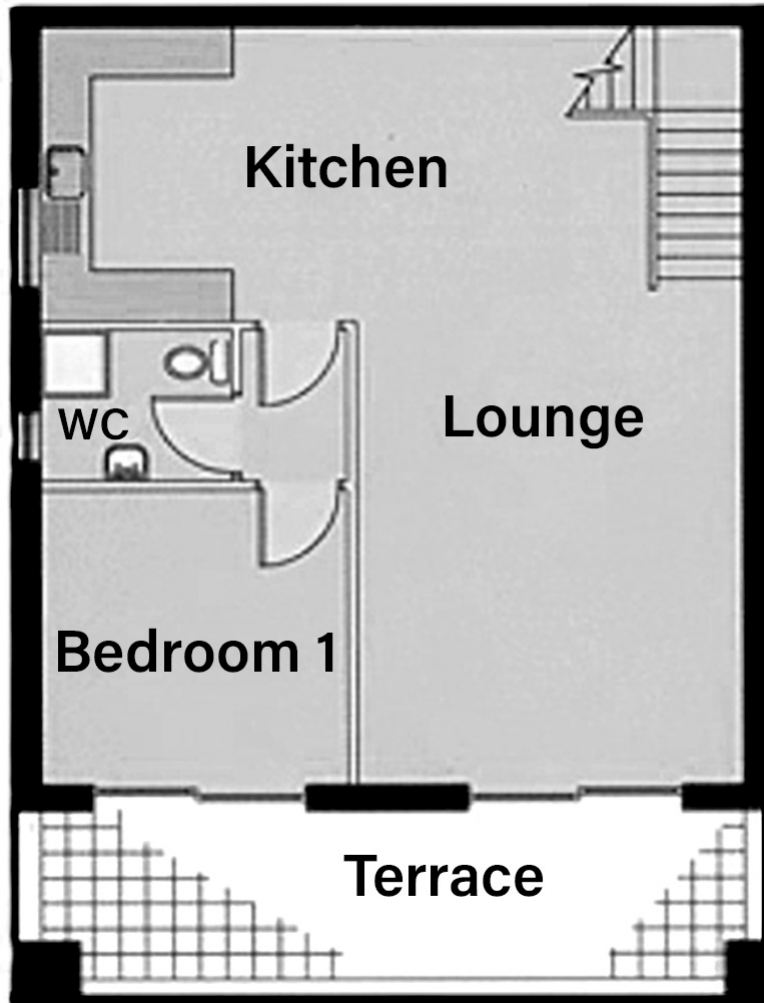
The apartment comes fully furnished with appliances in good working order.



Set on the
glorious,
untamed
west coast
of Sal,

just 5 minutes from Santa Maria and 15 minutes from the airport, Paradise Beach is a developing resort with huge potential. Directly opposite the 18-hole golf course to the east and Melia Dunas to the south, it covers 283,000 square metres of prime coastal real estate - the equivalent of 19 football pitches. With immaculate gardens and excellent swimming pools, it is a tranquil retreat from the hustle and bustle of Santa Maria and the hotel resorts, with some of the most spacious accommodation and best sea views of any resort on Sal. Plans are well underway for completion of the resort with a hotel and further amenities, but for now Paradise Beach offers excellent value for money and a glorious retreat from the stresses of everyday life.





WhatsApp +44 7779 591283
sales@homescasaverde.com
www.homescasaverde.com

Floor Plans