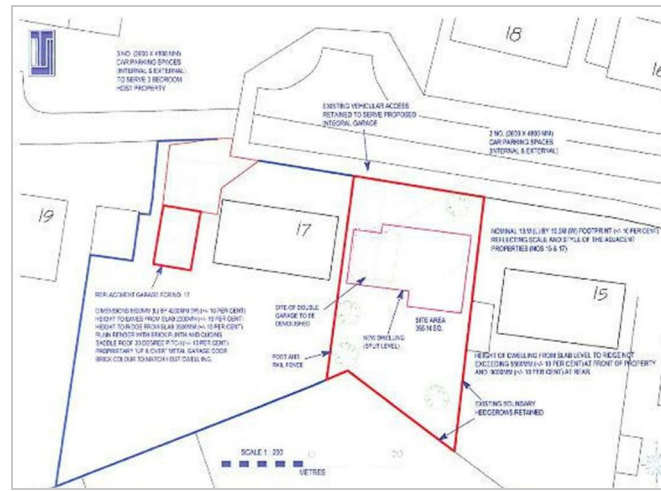




17 Parc-Yr-Onen, SA31 1ED
Offers in the region of £64,500



PLANNING PERMISSION
Located at Grid Reference: SN 415 209

PLANNING PERMISSION

Outline planning permission for the siting of one split level dwelling with integral garage was granted on the 10th September 2012 under Carmarthenshire county council reference number W/26772. The planning approval can be viewed online at www.carmarthenshire.go.uk under planning services and searching through the reference number.

LOCAL AUTHORITY
Carmarthenshire County Council, County Hall, Carmarthen.

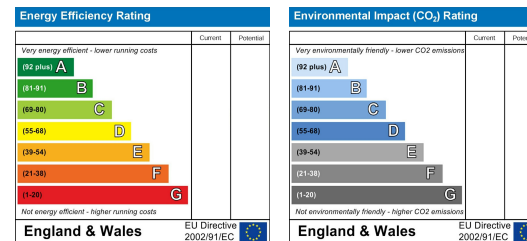
VIEWING
Call on site at any reasonable time.

A FREEHOLD Building Plot with views over Carmarthen Town, the Lower Towy valley and beyond. Situated at the head of a sought after established Cul-De-Sac, within walking distance of Carmarthen Town Centre. Approximate plot size is frontage -14m(45ft) x depth – 23m(75ft). Mains services including electricity, water, drainage and gas are available (prospective purchasers must satisfy themselves as to the cost and availability of connection to any services). Planning application number: W/26772

Area Map



Energy Efficiency Graph



These particulars, whilst believed to be accurate are set out as a general outline only for guidance and do not constitute any part of an offer or contract. Intending purchasers should not rely on them as statements of representation of fact, but must satisfy themselves by inspection or otherwise as to their accuracy. No person in this firm's employment has the authority to make or give any representation or warranty in respect of the property.

Cambrian Place Cambrian Place, Carmarthen, Carmarthenshire, SA31 1QG
Tel: 01267 235330 Email: sales@terrythomas.co.uk <https://www.terrythomas.co.uk>

