



## 25 Garn Road, Nantyglo, NP23 4NZ

£119,950 Freehold

Terrace Cottage • Lounge/Dining Room • Kitchen • Bathroom and En-suite Shower Room • Off Road Parking •  
EPC Rating: C



1 Bethcar Street, Ebbw Vale, Gwent, NP23 6HH  
Tel: 01495 302301 Email: [ebbwvale@bidmeadcook.co.uk](mailto:ebbwvale@bidmeadcook.co.uk)  
[www.bidmeadcook.co.uk](http://www.bidmeadcook.co.uk)



A mid-terrace cottage having period features including an open fireplace housing a wood burning stove, bread oven and a stone staircase concealed to the side. From its elevated position the property enjoys a far-reaching outlook over the valley with a view of the historical Round Towers, built in Nantyglo circa 1816. The accommodation comprises an open-plan lounge/dining room with open staircase leading to the first floor, kitchen, rear lobby/utility area and bathroom. To the first floor are two bedrooms, one having an en-suite shower room. The property benefits from UPVC double glazing, a combi-gas central heating system, rear garden with lawn, paved seating area, storage shed, woodstore and greenhouse. To the front of the property is a garden and off road parking.

Agents Note: We are advised the property was re-wired during April 2024.

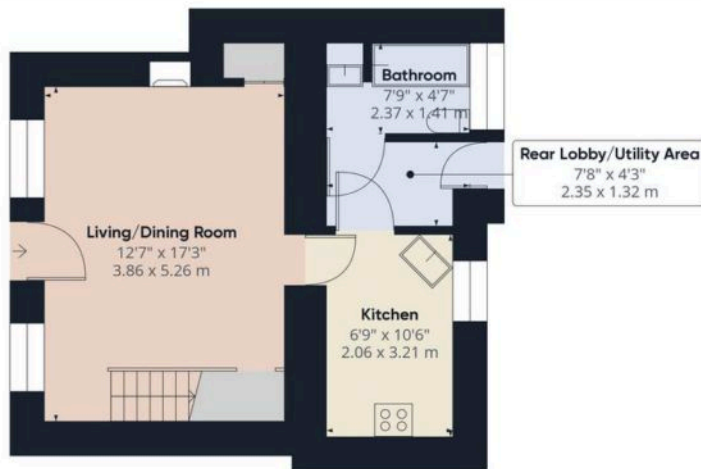


Council Tax band: A

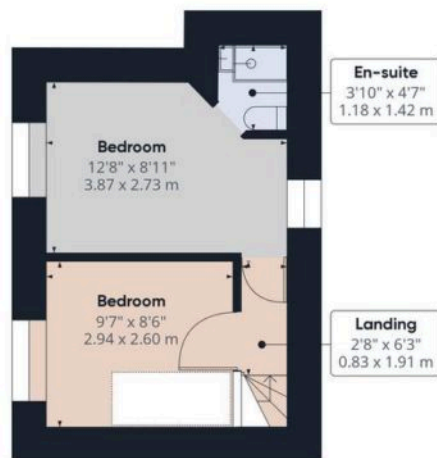
Tenure: Freehold

EPC Energy Efficiency Rating: C





Ground Floor



Floor 1



www.bidmeadcook.co.uk

**Approximate total area<sup>(1)</sup>**  
594.73 ft<sup>2</sup>  
55.25 m<sup>2</sup>

(1) Excluding balconies and terraces

While every attempt has been made to ensure accuracy, all measurements are approximate, not to scale. This floor plan is for illustrative purposes only.

GIRAFFE360

