

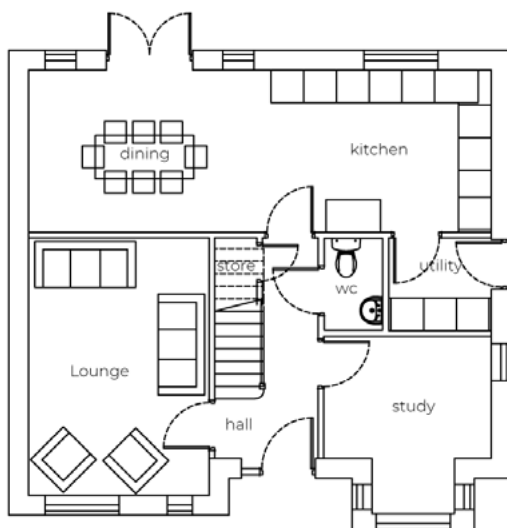
The Stowe

4 bedroom detached house with detached single garage



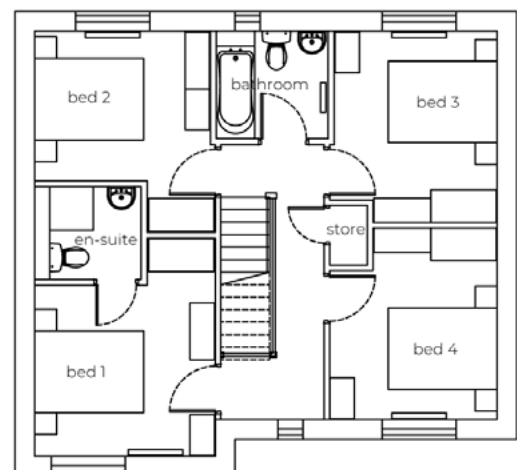
Seddon Homes.co.uk

Ground floor



Lounge	11'0" x 15'6"
Kitchen/Dining Area	28'0" x 9'11"
Study	9'11" x 7'6"
Utility	5'10" x 5'6"
WC	3'10" x 5'6"

First floor



Master Bedroom	11'0" x 13'3"
En Suite	6'6" x 5'8"
Bedroom 2	10'8" x 9'2"
Bedroom 3	9'11" x 11'8"
Bedroom 4	10'2" x 11'7"
Bathroom	6'10" x 6'8"

All layouts are for illustrative purposes only and may differ by plot. Please speak to your Sales Advisor for more information.