



16 Arnhill Road, Gretton

Corby



Key Features

- 3 Double Bedroom Grade II Listed Characterful Home
- Historic Features & Beautifully Presented Throughout
- Generous Living Room & Dining Room with Wood Burning Stove
- Hand Built Hard Wood Kitchen with Range Oven
- Seperate Utility Room leading to the Garage
- 3 Double Bedrooms with Generous Proportions
- Two Shower Rooms & Downstairs Bathroom
- Home Office/Attic Space with Potential
- Stunning Landscaped Cottage Garden
- Off Road Parking & Large Garage with Electric Doors

Step inside this enchanting Grade II listed home, where period charm meets modern comfort in every detail. The generous living room and dining area invite you to relax beside the wood burning stove, framed by exposed beams and original features that speak to the property's rich heritage. The hand built hardwood kitchen is a true delight for any home chef, complete with a range oven and thoughtful storage, while the separate utility room adds practicality and leads directly to the spacious garage (with electric doors for ease). Upstairs, three double bedrooms offer ample space and character, each with its own unique outlook, complemented by two well appointed shower rooms and a downstairs bathroom for added convenience. The versatile attic space, currently used as a home office, provides further potential for those seeking a creative retreat or extra storage. Throughout, the property is beautifully presented and a true gem of home!





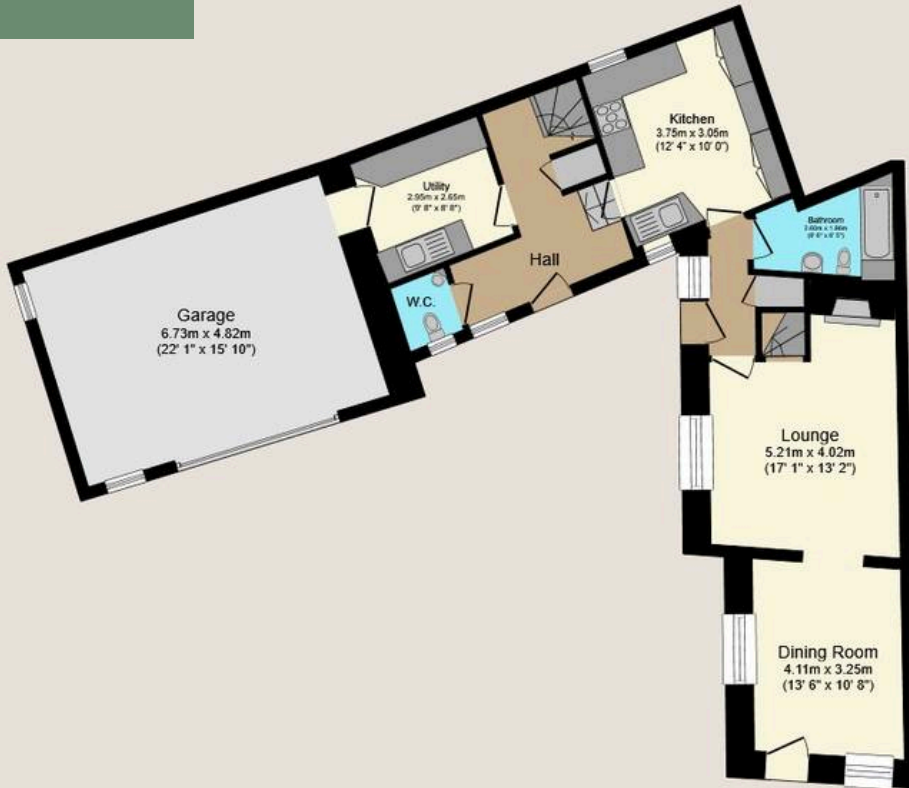


Step outside and discover a simply stunning landscaped cottage garden, designed to provide year-round colour and tranquillity. Mature borders, winding paths, and secluded seating areas offer the perfect backdrop for relaxing with a morning coffee, entertaining friends, or watching the seasons change. The garden has been thoughtfully planned to make the most of its sunny aspect, with established planting and lawned areas bordered by pretty stone walls. Off road parking is a real bonus, ensuring convenience for residents and guests alike, while the large garage (with electric doors) provides secure storage for vehicles, bikes, or hobbies. Whether you're a keen gardener or simply looking for a peaceful escape, this outside space is sure to delight and inspire. With every detail considered, this home offers a rare opportunity to enjoy both the character of a historic property and the comforts of modern living, all within a picturesque setting.



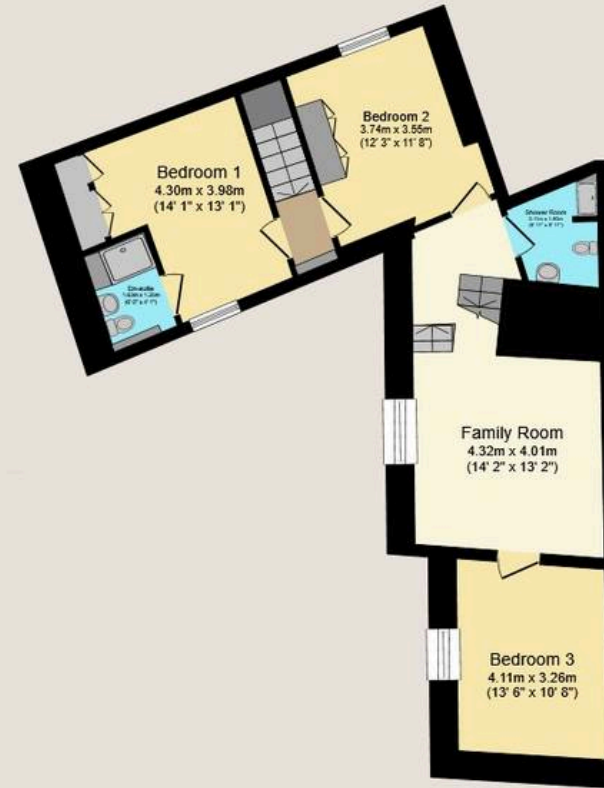






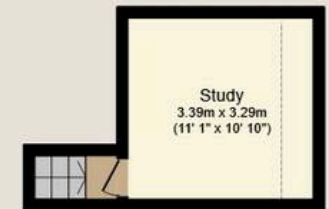
Ground Floor

Floor area 85.1 sq.m. (916 sq.ft.)



First Floor

Floor area 58.8 sq.m. (633 sq.ft.)



Second Floor

Floor area 12.7 sq.m. (137 sq.ft.)

Total floor area: 156.7 sq.m. (1,687 sq.ft.)

This floor plan is for illustrative purposes only. It is not drawn to scale. Any measurements, floor areas (including any total floor area), openings and orientations are approximate. No details are guaranteed, they cannot be relied upon for any purpose and do not form any part of any agreement. No liability is taken for any error, omission or misstatement. A party must rely upon its own inspection(s). Powered by www.Propertybox.io

