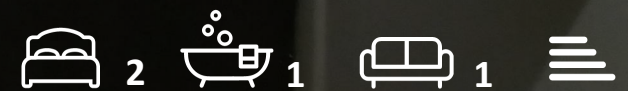




The Maitlands 8 Portarlington Road  
, Bournemouth, BH4 8BT

**£1,450 Per month**





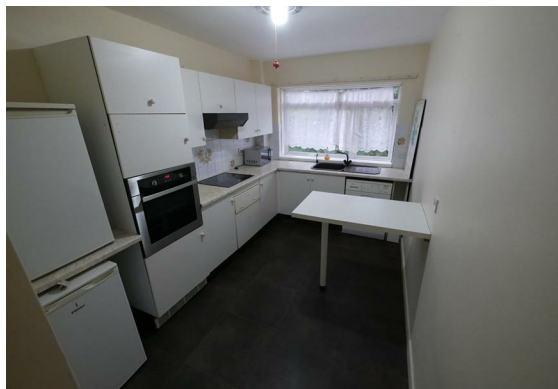
## The Maitlands 8 Portarlington

, Bournemouth, BH4 8BT

Large Two double bedroom flat with balcony over the garden area. First Floor in a small three floor block of flats. Exclusive green area, quiet, clean and safe area. Lovely friendly neighborhood. 5 min. Walk to the beach, same to the town centre and school. Away from the road noise. Car park allocated.

EPC rate - D

Council tax band - D







Floor Plan



Viewing

Please contact our Fully Managed Properties Office on  
if you wish to arrange a viewing appointment for this property or require further information.

Area Map



Energy Efficiency Graph



These particulars, whilst believed to be accurate are set out as a general outline only for guidance and do not constitute any part of an offer or contract. Intending purchasers should not rely on them as statements of representation of fact, but must satisfy themselves by inspection or otherwise as to their accuracy. No person in this firms employment has the authority to make or give any representation or warranty in respect of the property.