

Flat, 148 Commercial Road  
, Bournemouth, BH2 5LU

**£1,850 Per month**





## Flat, 148 Commercial Road

, Bournemouth, BH2 5LU

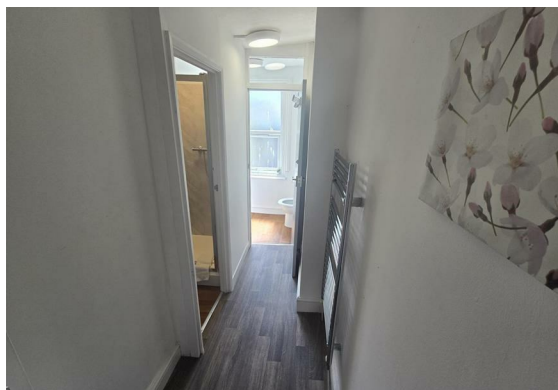
Large Maisonette with 5 lettable double bedrooms in Bournemouth Town centre, Triangle area. Access to main bus route M1 and all local amenities of commercial road.

The maisonette is offered furnished or unfurnished. First floor offers a fully fitted kitchen separated, a large lounge area to the back, plus two double bedroom facing the front, and one double bedroom to the back; A large corridor area throughout with skylight leads to the upper floor with further three large double bedrooms and two shower rooms with an extra separate loo.

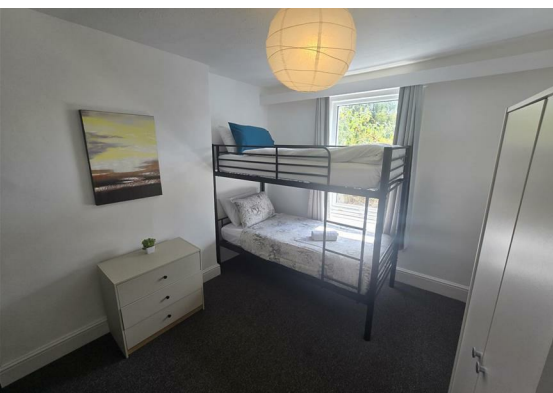
Council tax band - B

EPC energy efficiency rate - D

Complimentary Internet WIFI Access.







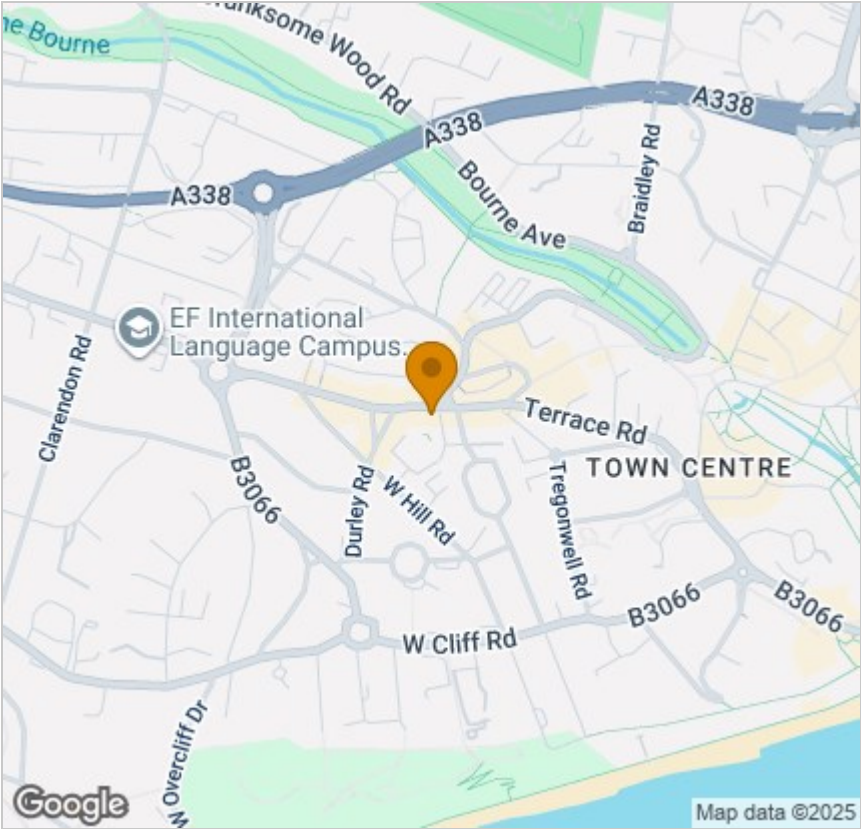
Floor Plan



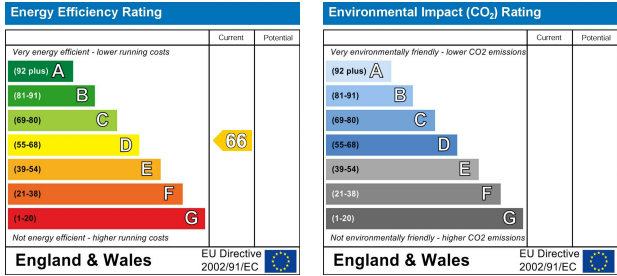
Viewing

Please contact our Leased Office on  
if you wish to arrange a viewing appointment for this property or require further information.

Area Map



Energy Efficiency Graph



These particulars, whilst believed to be accurate are set out as a general outline only for guidance and do not constitute any part of an offer or contract. Intending purchasers should not rely on them as statements of representation of fact, but must satisfy themselves by inspection or otherwise as to their accuracy. No person in this firms employment has the authority to make or give any representation or warranty in respect of the property.