



Birchwood

Farnham



Stock photography



Welcome to one of South East England's most desirable areas

Located on the edges of bustling Farnham, a sought-after market town in leafy Surrey, Birchwood is a new collection of stylish 1 & 2 bedroom apartments and 2, 3, 4 & 5 bedroom houses for sale in one of South East England's most desirable areas. You really can enjoy the best of all worlds here, with Farnham's vibrant centre and its many amenities moments away, yet with countryside and open green spaces all around. And when only the bright lights of the city will do, London is just an hour away on the train.



A place you'll be proud to call home

At Birchwood, you'll find a range of beautifully designed homes, with timber frame structures and spacious interiors. Each home boasts stylish fittings and quality specifications, all crafted with a focus on sustainability. The elegant exteriors are thoughtfully enhanced with nature-friendly features, while the open-plan, flexible living spaces are designed to effortlessly adapt to your evolving needs. You can also expect energy efficiency as standard, with these Light and Space range, timber frame structured homes fitted with Daikin air source heat pumps and EV car charging points.



Internal photograph of a previous Cala showhome



Computer generated image of a typical street scene at Birchwood

The great outdoors at your fingertips

Birchwood's semi-rural location means the great outdoors will always be within easy reach here. Rowhill Nature Reserve, Frensham Ponds and Puttenham Common are just some of the surrounding attractions, while the picturesque Surrey Hills are also moments away.

In the town itself, picturesque Farnham Park is home to some 320 acres of rolling grasslands, sports fields and walking areas. A selection of play areas located within the development are also perfect for days when you would rather stay closer to home.



Everything you need, always close by

With Farnham's vibrant town centre less than a five-minute drive from home or around 20 minutes away on foot, you'll have a wealth of amenities just waiting to be discovered. Farnham's diverse selection of retailers includes a number of upmarket brands, while the eating and drinking out scenes are no less eclectic. Choose from a selection of cosy pubs, or one of the many chain and independent restaurants serving cuisines from around the globe.



Local photography

Always well connected

With the A31 located minutes from Birchwood, the development could not be better placed for transport connections to surrounding towns and cities. This key trunk road connects to Winchester (37 minutes) and Guildford (20 minutes), also linking with the A3 for journeys into Central London in around 1 hour and 26 minutes.

Alternatively, catch a train from Farnham station (around a 20-minute walk from Birchwood), which will take you to London Waterloo in approximately an hour, with local services also available to Alton and Guildford.

Looking to take to the skies? Heathrow Airport is 45 minutes via the M3 and M25.



First class schools

If you have children, you won't have far to go to find excellent education options locally. Highly-rated South Farnham School is just a seven-minute drive from Birchwood and was rated the best-performing primary in the country by The School Guide in 2024.

For older students, Weydon School was in 2025 named one of the highest-performing secondaries in England in the Schools, Students and Teachers Network's Educational Outcomes Awards, and is walking distance from the development.



Fun for all the family

For family days out, there will be plenty to enjoy here. Alice Holt Activity Centre is a particularly popular choice for families, with its Laser Tag and Go Ape facilities ideal for keeping youngsters entertained. The state-of-the-art REEL Cinema is also just the place for a day or night at the movies, with six screens, including a premium lounge with sofa-style seating.

Or for some theme park fun, the famous Chessington World of Adventures Resort is just 47 minutes away on the A3.



Places to go



Eating out – Farnham town centre has a wide array of eateries, from familiar names like Zizzi, Pizza Express and Bill's to cosy inns serving hearty pub grub and independent restaurants offering a variety of world cuisines.



Sports and leisure – For fun, activity and fitness, Farnham Leisure Centre will have the whole family covered. Enjoy a dip in the 25-metre swimming pool, work up a sweat in the gym, play your game of choice in the six-court sports hall or enjoy a class in one of the exercise studios. Alternatively, enjoy the luxury of David Lloyd Farnham, with its many facilities including tennis courts and a spa section.



History and heritage – For an intriguing insight into the town's history and heritage, the Museum of Farnham is the perfect place to start. With its collection of some 20,000 historic artefacts relating to the town and neighbouring villages, this fascinating attraction is well worth a visit. Or why not spend some time at the 12th century Farnham Castle, once home to the Bishops of Winchester.



Local photography



Local photography



Local photography



Things to do



Parks and nature – With so many open green spaces in the local area, there will always be somewhere new to experience. With its acres of beautiful heathland offering views across the Weald and myriad bird and animal species, the RSPB Farnham Heath nature reserve is a must for wildlife lovers.



Entertainment – Farnham Maltings is a hive of culture and entertainment, offering everything from talks and workshops to live music and shows. Haslemere Hall in neighbouring Haslemere, meanwhile, runs a varied programme of the performing arts.



Shopping – Farnham's impressively diverse range of retailers includes names like Jo Malone, Oliver Bonas, Neptune and Waitrose, with plenty of independent boutiques to discover too. Alternatively, London's seemingly endless shopping opportunities are just an hour away on the train from Farnham station.



Family days out – Birdworld is home to species from around the world, including penguins, parrots and flamingos, and has children's play areas and landscaped gardens. The Old Kiln Light Railway offers relaxing journeys through local countryside aboard vintage locomotives.

See a detailed view of the area and get directions





Getting around



By foot: Weydon School (13 minutes), the Museum of Farnham (14 minutes), The Plough pub (16 minutes) and Farnham town centre (18 minutes) are all within walking distance of home.



By car: Farnham Leisure Centre (7 minutes), train station (8 minutes) and Farnham Park (9 minutes) are straightforward journeys in the car.



By train: Farnham station offers regular services to Guildford (23 minutes), Woking (24 minutes) and London Waterloo (1 hour).

See a detailed view of the area and get directions



Journey times are approximate. Train journey times are accurate as of April 2025 and are sourced from thetrainline.com

Superbly connected



On foot

- Bishops Meadow – 0.5 miles
- Côte – 0.7 miles
- Waitrose – 0.8 miles
- Farnham Town Centre – 0.9 miles
- Farnham Station – 1.2 miles
- Farnham Castle – 1.2 miles



By car

- Birdworld – 2.2 miles
- South Farnham School – 2.3 miles
- Sainsbury’s – 2.7 miles
- David Lloyd – 2.9 miles
- Squires Garden Centre – 3.2 miles
- Frensham Little Pond – 4 miles
- Farnham Golf Club – 4.4 miles
- Greyfriars Vineyard – 10.5 miles
- Winchester – 25.9 miles
- London – 42 miles



By rail from Farnham train station

- Alton – 15 mins
- Guildford – 23 mins
- Woking – 23 mins
- London Waterloo – 1 hour

See a detailed view of the area and get directions >

Journey times are approximate. Train journey times are accurate as of April 2025 and are sourced from National Rail.

Birchwood

The development

- The Bayberry**
2 bedroom semi-detached home
- The Beech**
2 bedroom semi-detached or terraced home
- The Brome**
3 bedroom semi-detached home
- The Dandelion**
3 bedroom detached or semi-detached home
- The Fennel**
3 bedroom detached or semi-detached home
- The Marram**
3 bedroom detached home
- The Lancewood**
3 bedroom detached home
- The Pine**
3 bedroom detached home
- The Orpine**
3 bedroom detached home
- The Birchwood**
4 bedroom detached home
- The Silverbell**
4 bedroom detached home
- The Wintergreen**
4 bedroom detached home
- The Willow**
5 bedroom detached home
- The Yew**
5 bedroom detached home
- Birch Lodge**
1 & 2 bedroom apartments
- Chestnut House**
1 & 2 bedroom apartments
- Holly House**
1 & 2 bedroom apartments
- Oak Lodge**
1 & 2 bedroom apartments
- Sycamore House**
1 & 2 bedroom apartments
- Affordable Rent**
- Shared Ownership**



The above development layout is not drawn to scale and is for general guidance only. Road layouts, pathways and external treatments may differ. Landscaping is indicative only. Please confirm the most up-to-date details with our sales consultants prior to reservation.

IMPORTANT NOTICE TO CUSTOMERS: The Consumer Protection from Unfair Trading Regulations 2008. Cala Homes (South Home Counties) Limited operates a policy of continual product development and the site layout shown in this brochure insert is indicative only. Information contained is accurate at time of publication on 02.07.25. See the main brochure for the full Consumer Protection statement.

Visit our interactive siteplan for our latest availability

Choose the home that's right for you



The Bayberry
2 bedroom semi-detached home



The Beech
2 bedroom semi-detached
or terraced home



The Brome
3 bedroom semi-detached
home



The Dandelion
3 bedroom detached
or semi-detached home



The Fennel
3 bedroom detached
or semi-detached home

[Click here for current availability and prices](#) >

Choose the home that's right for you



The Marram
3 bedroom
detached home



The Lancewood
3 bedroom
detached home



The Pine
3 bedroom
detached home



The Orpine
3 bedroom
detached home

[Click here for current availability and prices](#)



Local photography

Choose the home that's right for you



The Silverbell
4 bedroom
detached home



The Wintergreen
4 bedroom
detached home



The Willow
5 bedroom
detached home



The Yew
5 bedroom
detached home

Click here for current availability and prices >



Local photography



Desirable in every detail

The finishing touches, unexpected flourishes and innovative features. Designer kitchens with desirable technology built-in, for showing off your culinary flair. Sleek family bathrooms and en suites with high specification sanitaryware, for indulging in some well-deserved pampering.

If you need adaptations to make your home more accessible (for example a fire alarm for the deaf or hard of hearing), we can install these for you subject to build stage. There is no installation fee, just a charge (at cost) for the product.

With every home comfort considered for energy-efficient and low maintenance living, each aspect of your family home is beautifully designed and built to an exacting standard; because when you look for quality, it's the little things that make all the difference.

[Click here to find out more about our Accessibility Features](#)



[Click here to view the full specification](#)





External photography from a previous Cala development

What our customers say



Internal photography from a previous Cala development

“We wanted a new build. Our previous house needed substantial work doing over the time we were living there and always felt like an ongoing process, so we wanted to leave that behind and find somewhere new, homely and ready.

Our Cala Home was perfect. We lifted and shifted our furniture in and we were ready

to start living. Being able to choose finishes in areas like the bathroom and kitchen from the outset meant that we felt like we were moving into a newbuild with our own style.”

The Staceyfounds,
Purchasers at St Peter's Quarter



Internal photography from a previous Cala development

See more customer stories, reviews and ratings





External photography from a previous Cala development



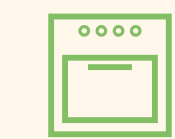
Stock photography

Why buy new

There's nothing quite like moving into a brand-new home. From newly-installed kitchens and bathrooms to the peace of mind of knowing that your property is safe, energy efficient and low maintenance.

What's more, you're buying a complete blank canvas on which to stamp your own individual style. Your new home is covered by an NHBC or similar industry-regulated insurance scheme covering the structural integrity of your new home from years three to 10. The first two years of the warranty is provided by us.

This means we take responsibility for fixing any quality issues during this period after you move in. We also provide you a 24-hour response service for emergency calls. We take personal pride in our customer service.



Modern fixtures, fittings & technology



Hyper fast fibre optic broadband



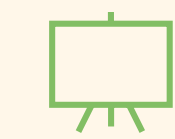
Less maintenance



Energy efficient



A chain free move



A blank canvas

[Click here to find out more about the top reasons to buy new](#)



Cala Homes

Cala Homes' primary goals are to deliver design excellence in everything we do and ensure a first class customer experience for everyone who buys one of our homes.

To achieve this, we focus on investing in our most important asset – our people – and running an effective and sustainable business that makes a positive contribution in the areas where we operate.

Cala is built on the foundation values of passion, quality, delivery and respect. Click on the arrows below to find out more about Cala Homes.



Our values >



Aspirational homes >



First class customer service >



Quality design and build >



Investment in our people >



External photography from a previous Cala development



Sustainability the Cala way

Cala has a rich heritage originally dating back to 1875. We started building homes in the 1970s and, for over 50 years, have been creating high quality, sustainable new homes and communities. However it is not just what we do, but the way we do it that matters to Cala.

Thinking sustainably is at the heart of everything we do; from identifying the right sites, through creating a safe, healthy and fulfilling working environment, to taking a sensitive approach to development and delivering communities that meet local requirements.

As part of our sustainability journey we are aiming to reduce our paper usage by 90% across the company, including the customer journey, which is why we are aiming for online only brochures at our developments.

Click on the arrows below to find out more about our sustainability journey.



Environment >



Customers >



Design >



People >



Land >



Community consultation >

Home is more than a house

Our Community Pledges bring together a host of commitments to each community we build in. Our Pledge goes above and beyond our planning obligations, in fact it's an evolution of work we've been doing for many years, ensuring that we support local areas and people who live there.

From tree planting, to supporting local businesses in our showhomes, schools programmes and local charity donations. It's our Pledge to you, our local communities, and we can't wait to see the difference it will make.



Stock photography

[Click here to find out more](#)



Stock photography



Stock photography



Welcome to your new home

Birchwood,
West Street,
Farnham, GU9 7AS

[Click here to arrange your viewing](#)



Stock photography

IMPORTANT NOTICE TO CUSTOMERS: The Consumer Protection from Unfair Trading Regulations 2008. Cala Homes (South Home Counties) Limited operates a policy of continual product development and the specifications outlined in this brochure are indicative only. We reserve the right to implement minor changes to the sizes and specifications shown on any plans or drawings in this brochure without warning. Where alterations to the design, construction or materials to be used in the construction of the property would materially alter the internal floor space, appearance or market value of the property, we will ensure that these changes are communicated to potential purchasers. Whilst these particulars are prepared with all due care for the convenience of intending purchasers, the information is intended as a guide. The computer generated images and photographs do not necessarily represent the actual finishings/elevation or treatments, landscaping, furnishings and fittings at this development. Floor plans, dimensions and specifications are correct at the time of publication. The illustrated location map is a general guide only. Please note that distances and timings referred to in this brochure are approximate and sourced from Google Maps. For information relating to weather in the area of this development, please refer to the Meteorological Office (www.metoffice.gov.uk). Nothing contained in this brochure shall constitute or form part of any contract. Information contained in this brochure is accurate at time of publication on 02.07.25. Cala (South Home Counties) Limited, registered in England & Wales company number 08800163. Registered office: CALA House, Business Park, Station Rd, Dorking RH4 1HJ. Agent of Cala Management Limited.