



The Huntingdon

4 bedroom semi-detached
and detached home



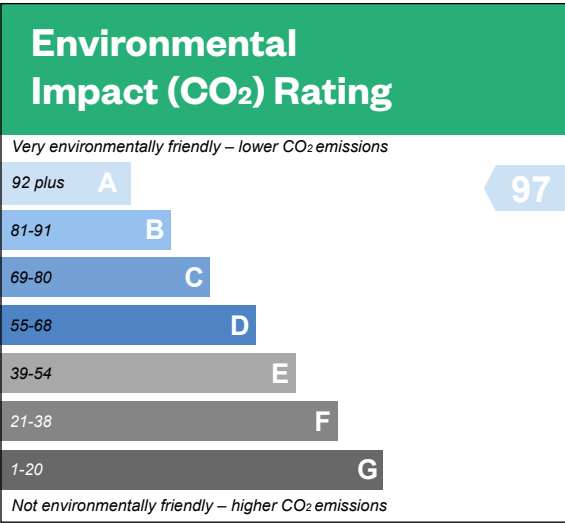
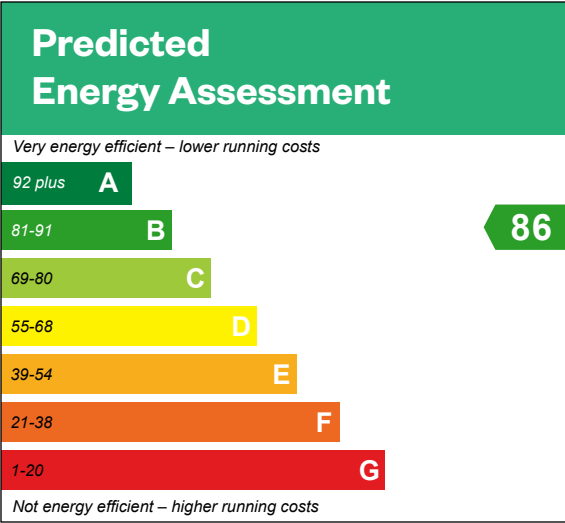
Computer Generated Image - The Huntingdon

The Huntingdon

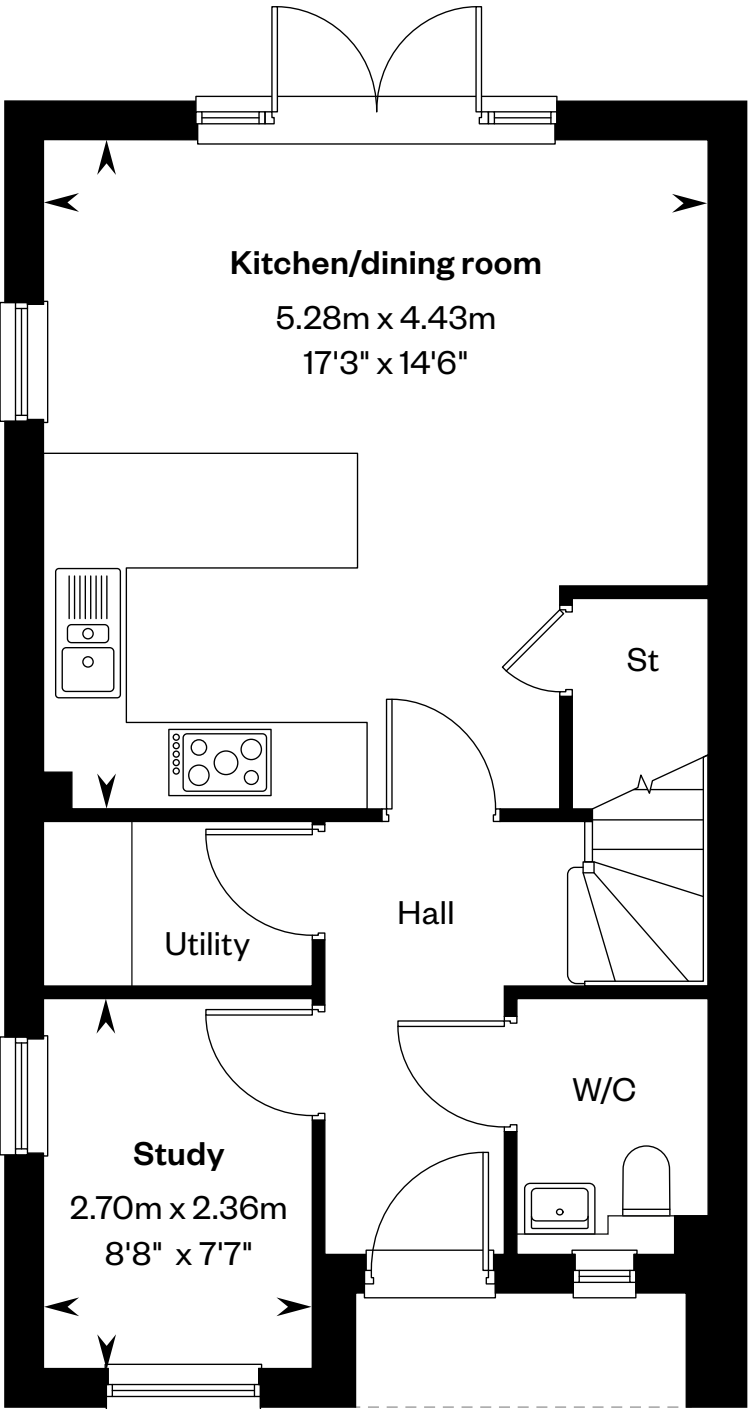
4 bedroom semi-detached and detached home

Plots 14, 15, 165, 175, 189 & 194 – as shown

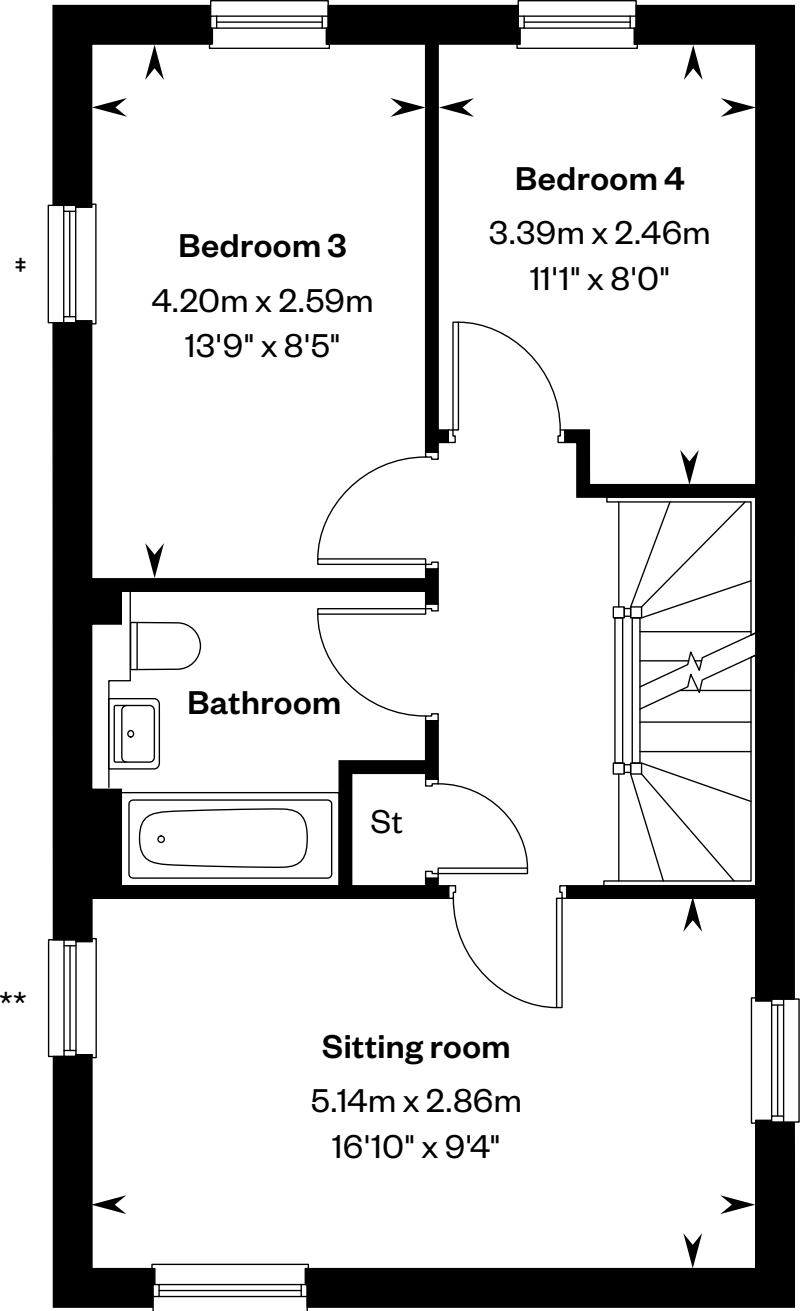
Plots 160, 179 & 188 – handed



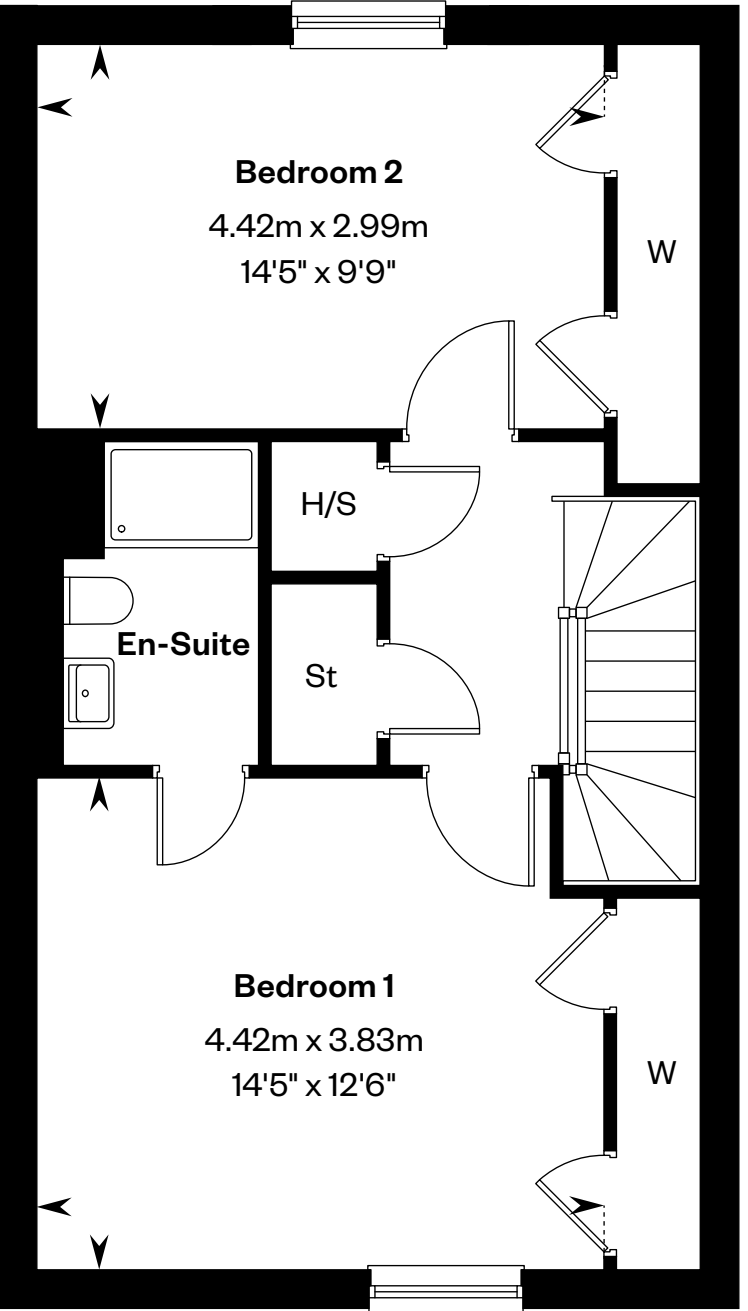
This is a Predicted Energy Assessment for properties that are incomplete. Once the property is completed, this rating will be updated and an official Energy Performance certificate will be created for the property.



Ground floor



First floor



Second floor

*Window omitted to plot 189. *Window omitted to plots 189 & 14. **Window omitted to plots 14, 160, 165, 175, 179, 189 & 194. *Window to plots 160, 165, 175, 179 & 194 only. Please ask your Sales Consultant for further details.

H/S: Heating system cupboard. St: Store cupboard. W: Wardrobe.

IMPORTANT NOTICE TO CUSTOMERS: The Consumer Protection from Unfair Trading Regulations 2008. Cala Homes (North Home Counties) Limited operates a policy of continual product development and the specifications outlined in this brochure are indicative only. The computer generated images and photographs do not necessarily represent the actual finishings/ elevation or treatments, landscaping, furnishings and fittings at this development. Information contained is accurate at date of publication on 25.04.25. See the main brochure for the full Consumer Protection statement.