



6 Clarendon Street, Nottingham, NG1 5HQ

£1,520 Per week

- Available 2026 / 2027
- £190 per person per week based on 8 sharing
- Parking Available
- Walking Distance To NTU
- 8 Bed House
- Inclusive of bills subject to fair usage
- City Centre Location
- Excellent Transport Links

# 6 Clarendon Street, Nottingham NG1 5HQ

**\*\*8-Bedroom Student House | Bills Included | Academic Year 2026/2027\*\***  
£190.00 PPPW based on 8 Sharing  
Bills Included (subject to fair usage)

This stunning 8-bedroom student property on Clarendon Street combines spacious living with an unbeatable city-centre location. Perfect for a large group looking to live together, the house is designed with comfort, practicality, and social living in mind.

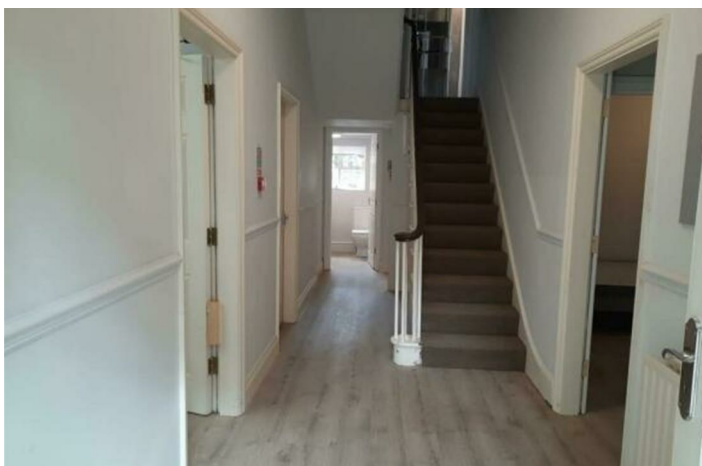
Prime city-centre location, just minutes from Nottingham Trent University  
Excellent transport links across Nottingham and to the University of Nottingham  
Surrounded by shops, restaurants, bars, and local amenities – everything you need on your doorstep

This is a rare opportunity to secure a large, modern student home in one of Nottingham's most desirable locations.

Contact us today to arrange a viewing



Council Tax Band:







Directions

Viewings

Viewings by arrangement only. Call 01157042554 to make an appointment.

EPC Rating:  
C

Energy Efficiency Rating		
	Current	Potential
Very energy efficient - lower running costs		
(92 plus) A		
(81-91) B		
(69-80) C	76	
(55-68) D		
(39-54) E		
(21-38) F		
(1-20) G		
Not energy efficient - higher running costs		
England & Wales		EU Directive 2002/91/EC