



## 16 Park Suites, 5-7 Waverley Street, Aboretum, Nottingham, Nottinghamshire, NG7 4LE £1,450 Per month

- Available Academic Year 2025/2026
- Including Gas, Electric, Water and the Internet, subject to fair usage.
- Secure Gated Development
- Fully Fitted Kitchen including Integrated Appliances
- Council Tax A
- £1450 PCM
- Luxury Accommodation
- Available Sept
- Stylish
- EPC C

# 5-7 Waverley Street, Nottingham NG7 4HF

**\*\*CITY CENTRE PENTHOUSE APARTMENT AVAILABLE SEPT 2025/2026\*** - Spacious 1 bedroom apartment at only £1450.00 PCM, INCLUSIVE of Electric, Water and the Internet, subject to fair usage.

Mulberry Lane Estates and Lettings are proud to bring this One bedroom Penthouse Apartment to the market, not to be missed.

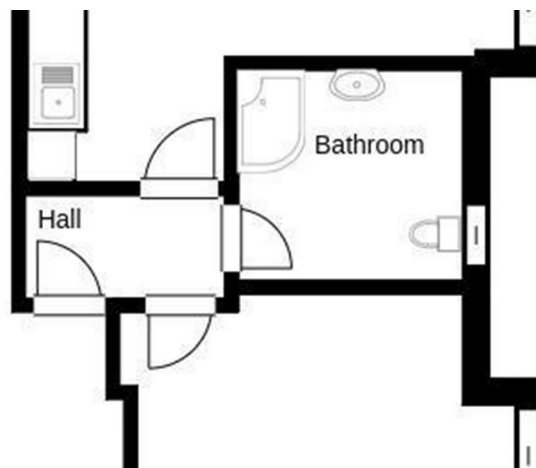
Available for the 2025/26 academic year for £1450 PCM including electric, water and internet.

Park Suites is First Class luxury accommodation for Students of Nottingham.  
Just 2 minutes walk to the NTU City Campus and the City Centre.

Dont miss out!  
Call Mulberry Lane now to arrange a viewing!



Council Tax Band: A



### About

Stylish gated One bedroom Penthouse apartment minutes from NTU City Campus and Nottingham City Centre, available for the 2025/2026 Academic Year.

### Lounge/Kitchen

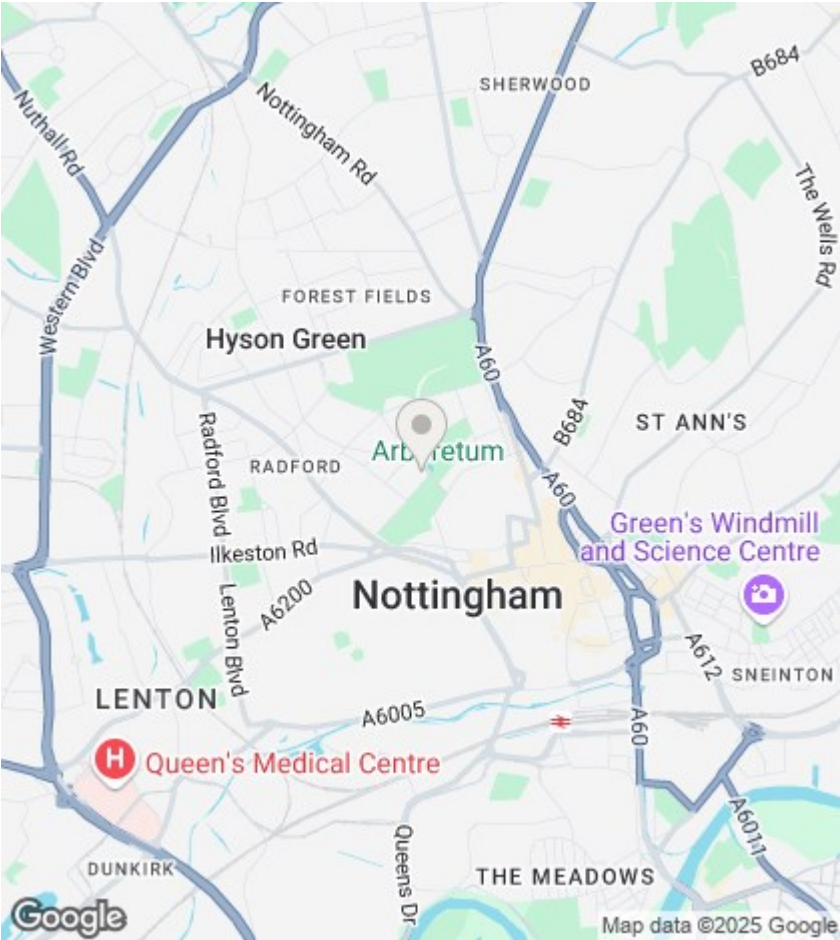
A modern open plan kitchen and lounge benefits from integrated appliances including oven, hob, dishwasher, washer/dryer and Fridge/Freezer, there is a wall mounted tv in the lounge area for cosy evenings.

### Bedroom

Large stylish double bedroom is finished with modern furniture including a double bed, mattress, wardrobe, bedside table, desk and chair and also a wall mounted TV.

### Shower Room

Finished to a high standard, with a large shower, sink and WC.



Directions

Viewings

Viewings by arrangement only. Call 01157042554 to make an appointment.

EPC Rating:  
C

Energy Efficiency Rating		
	Current	Potential
Very energy efficient - lower running costs		
(92 plus) A		
(81-91) B		
(69-80) C	77	
(55-68) D		
(39-54) E		
(21-38) F		
(1-20) G		
Not energy efficient - higher running costs		
England & Wales	EU Directive 2002/91/EC	