



## Flat 13, Park Suites 5-7 Waverley Street, Aboretum, Nottingham, Nottinghamshire, NG7 4JE £380 Per week

- Available Academic Year 2025/2026
- Including Gas, Electric, Water and the Internet, subject to fair usage.
- Secure Gated Development
- 50 Week Tenancy
- Council Tax B
- £190 PPPW based on 2 sharing
- Luxury Accommodation
- Available July
- Stylish
- EPC C

# Park Suites 5-7 Waverley Street, Nottingham NG7 4HF

**\*\*CITY CENTRE APARTMENT AVAILABLE JULY 2025/2026\*** - Spacious 2 bedroom apartment at only £190.00 PPPW INCLUSIVE of Electric, Water and the Internet, subject to fair usage.

Mulberry Lane Estates and Lettings are proud to bring this 2 double bedroom apartment to the market, not to be missed. Available for the 2025/26 academic year for £190.00 PPPW based on 2 sharing including electric, water and internet.

Park Suites is First Class luxury accommodation for Students of Nottingham.

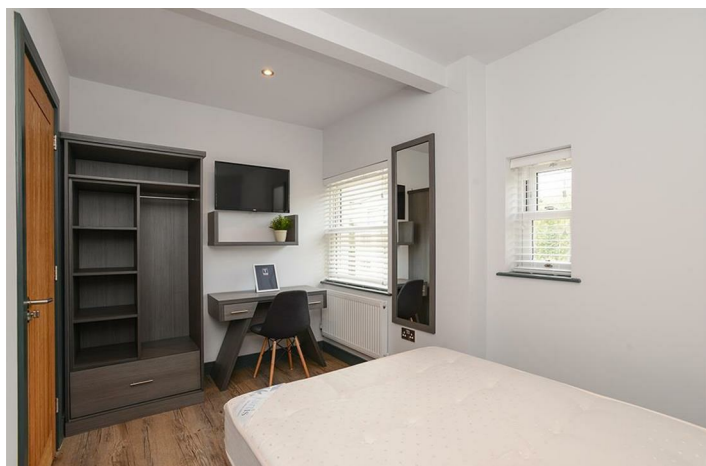
Just 2 minutes walk to the NTU City Campus and the City Centre.

Dont miss out!

Call Mulberry Lane now to arrange a viewing!



Council Tax Band: B



### About

Stylish gated two bedroom apartment minutes from NTU City Campus and Nottingham City Centre, available for the 2025/2026 Academic Year!

### Lounge/Kitchen

A modern open plan kitchen and lounge benefits from integrated appliances including oven, hob, dishwasher, washer/dryer and Fridge/Freezer, there is a wall mounted tv in the lounge area for cosy evenings.

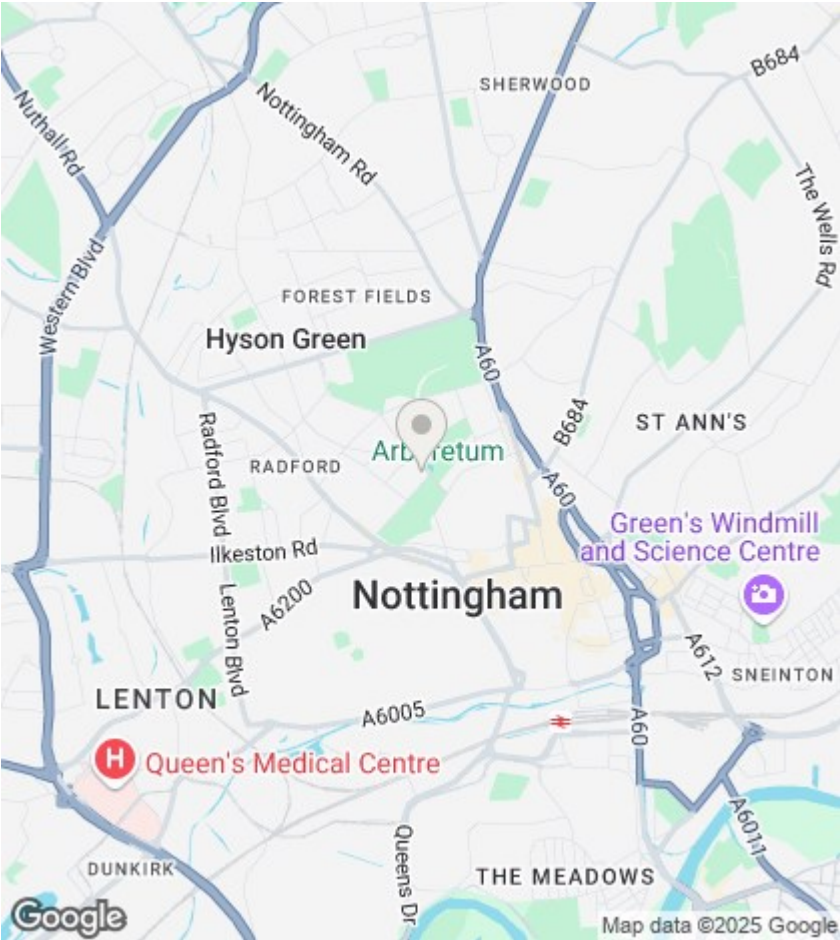
### Bedroom

Both stylish double bedrooms are finished with double bed, mattress, wardrobe, bedside table, desk and chair and also a wall mounted TV.

### Shower Room

Finished to a high standard, with a large shower, sink and WC.





Directions

Viewings

Viewings by arrangement only. Call 01157042554 to make an appointment.

EPC Rating:  
C

Energy Efficiency Rating		
	Current	Potential
Very energy efficient - lower running costs		
(92 plus) A		
(81-91) B		
(69-80) C	77	
(55-68) D		
(39-54) E		
(21-38) F		
(1-20) G		
Not energy efficient - higher running costs		
England & Wales	EU Directive 2002/91/EC	