



## Flat 2, Howard One Howard Street, Nottingham, NG1 3LT

£700 Per week

- Available Academic year 2025/2026
- Including gas, electric, water and the internet
- Ensuite showers
- Integrated Appliances
- CCTV
- Only £175.00 based on 4 sharing, subject to fair usage
- Double rooms
- Open plan kitchen/lounge
- Intercom and Fob access
- Stylish accommodation

# Howard One Howard Street, Nottingham NG1 3LT

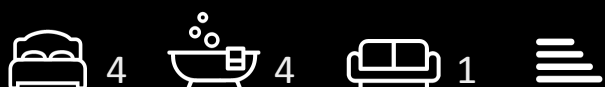
**\*\*CITY CENTRE APARTMENT AVAILABLE SEPTEMBER 2025\*\***

## LOW DEPOSIT

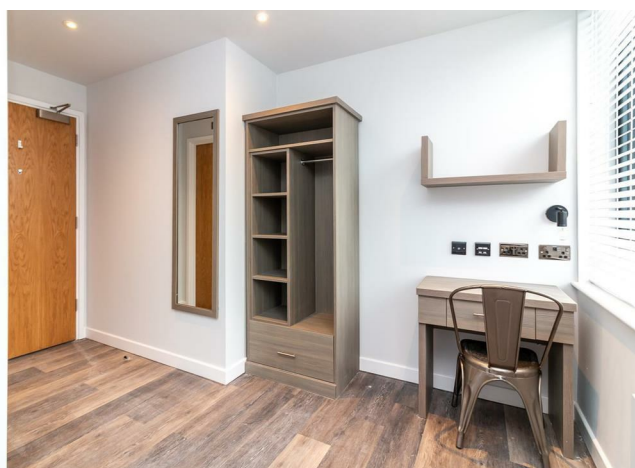
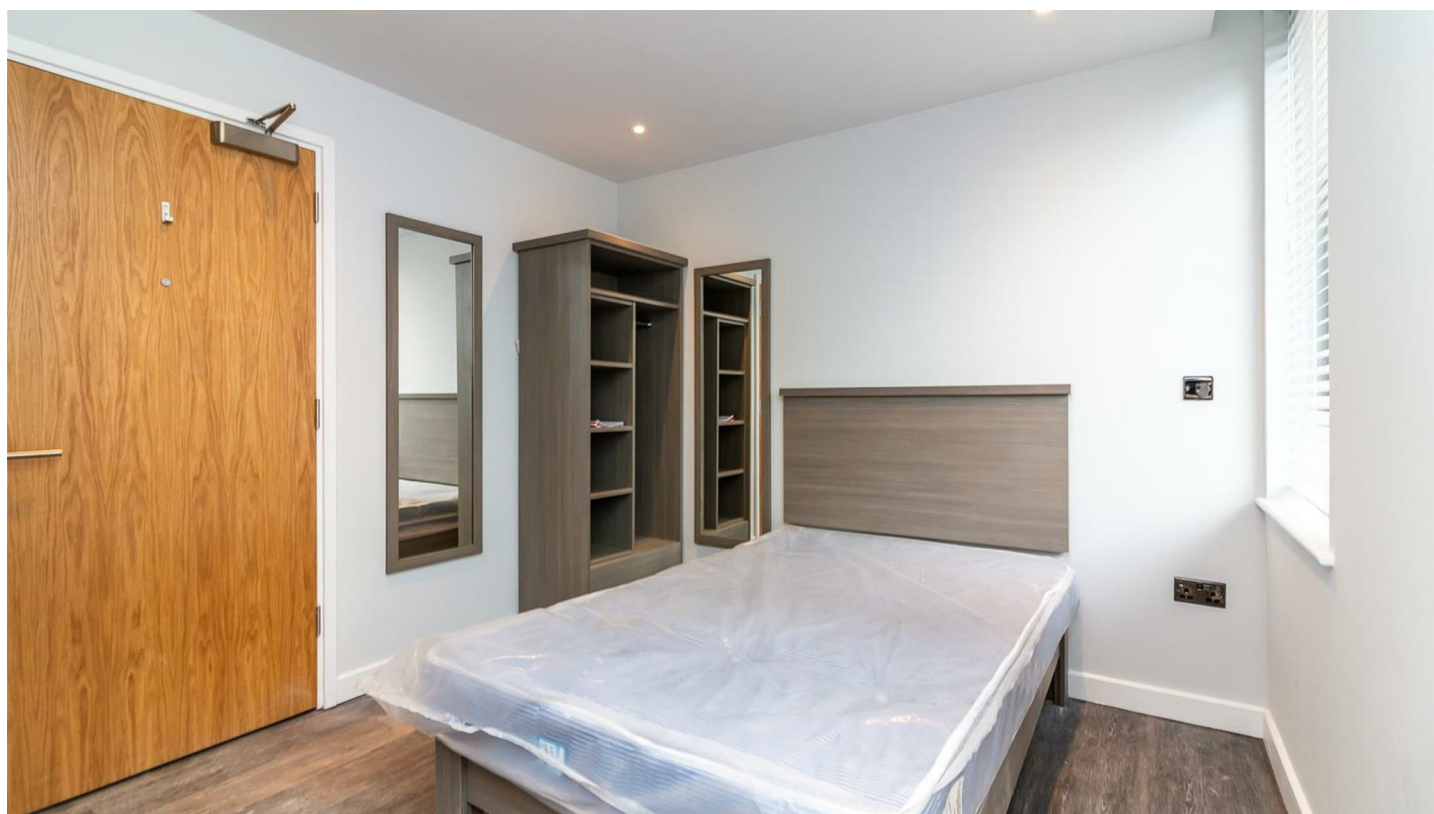
Mulberry Lane are proud to bring to the market this 4 double bedroom apartment with en-suites is available for the 2025/26 academic year for £175.00 pppw based on 4 sharing including electric, water and internet, subject to fair usage.

Ready for the 25/26 academic year the Howard One development provides stylish accommodation to the Students of Nottingham.

Call 01157042554 to arrange a viewing!



Council Tax Band: C



## Property

Recently built Howard One development provides first class luxury accommodation to the students of Nottingham

## About

Located less than a 10 minute walk to NTU City Campus and with easy access to transport links to Clifton Campus and Uni of Nottingham campus this property is in the ideal location for all Nottingham students.

## Apartment

This 4 bed apartment is situated on the second floor of the building and benefits from fob entry and CCTV. Each apartment has its own intercom entry system to allow access to visitors without having to go to the main door.

## kitchen

The apartment has an open plan kitchen living area central to the apartment with integrated appliances including fridge freezers, dishwasher and oven. The building has pay per use industrial laundry facilities for you to use

## Lounge

Within the lounge area there will be a large wall mounted TV and Grey plush sofas creating a social space to sit down and relax.

## bedrooms and ensuite bathroom

Each of the double bedrooms will be provided with a double bed, wardrobe, desk and chair, mirror with an overhead lamp.

The furniture is matching grey wood finish with a modern touch and is perfectly complimented by grey laminate flooring. Each bedroom has its door viewers installed to provide extra security, and the hallway area is separated by two doors leading to the kitchen.

There is also an ensuite shower room to each bedroom benefiting from a modern fitted shower, with a fixed round waterfall head and a standard hand held one, WC, sink and mirror.

The design of this mirrors the modern finish of the property, with the black and white marble flooring to the ceiling tiles, which provides that luxury feel.



Directions

Viewings

Viewings by arrangement only. Call 01157042554 to make an appointment.

EPC Rating:

Energy Efficiency Rating		
	Current	Potential
Very energy efficient - lower running costs		
(92 plus) A		
(81-91) B		
(69-80) C		
(55-68) D		
(39-54) E		
(21-38) F		
(1-20) G		
Not energy efficient - higher running costs		
England & Wales		EU Directive 2002/91/EC