



Flat 2, 206 Mansfield Road, Nottingham, NG5 2BU

£1,250 Per annum

- Available Academic Year 2025/2026
- Two Double Bedrooms
- Available from July 2025
- Council Band B
- Off street parking
- £156.00 pppw based on 2 sharing
- Furnished
- 50 Week Tenancy
- EPC D
- Communal garden

206 Mansfield Road, Nottingham NG5 2BU

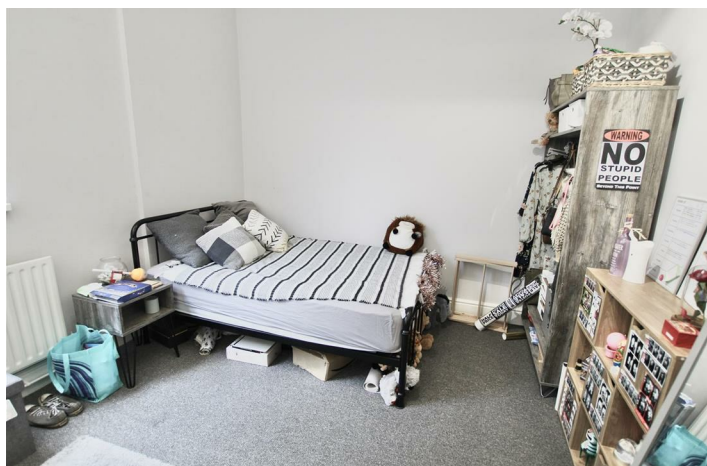
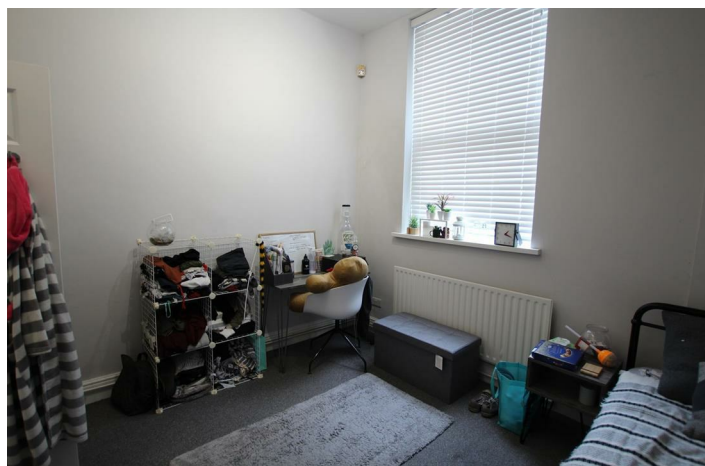
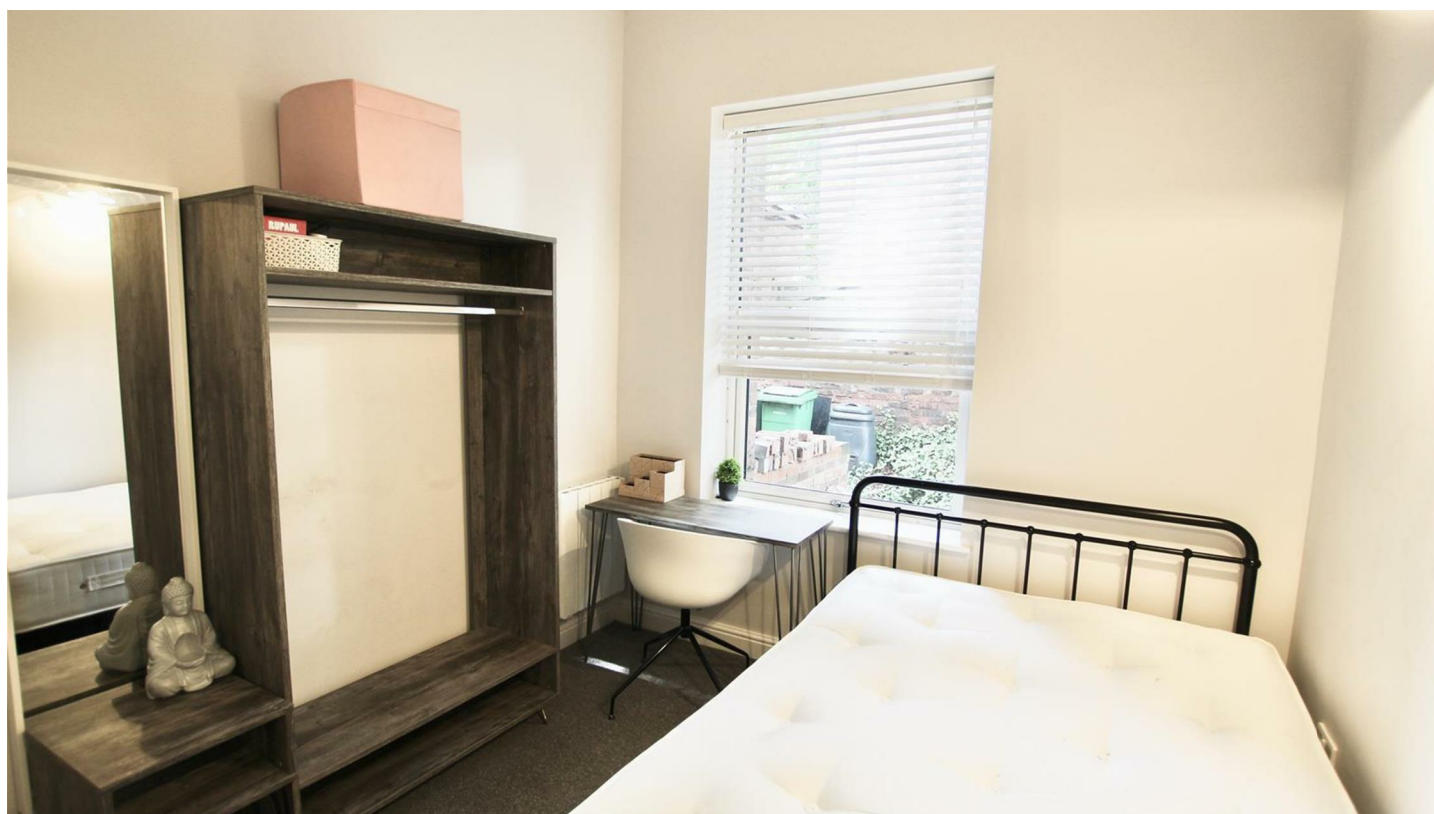
Mulberry Lane Estates and Letting are proud to bring this spacious 2 bedroom ground floor apartment to the market.

It is within walking distance to the City Centre and is available from July 2025 and includes off street parking! Refurbished in 2020, this two Double bedroom, modern apartment is available for the 2025/2026 Academic Year. Only £156.00 pppw excluding bills!

Don't miss out call now on 0115 7042554



Council Tax Band: B



About

A spacious 2 Double bedroom apartment available for the academic year 2025/2026.

Situated opposite the Forest Recreation ground on the entrance of the City Centre this apartment is only a 10 minute walk to the City Centre and all it has to offer is Nottingham Trent Units only 15 minute walk away from the property.

There is unallocated off street parking available to the rear of the property.

Apartment

In brief the ground floor apartment comprises of a modern kitchen provided with white goods including oven, fridge freezer and a washing machine, with ample cupboard space.

The large living area is located to the front of the property, has a large bay window looking over the communal garden.

The living room is a perfect social space.

Both double bedrooms of equal size are provided with a double bed, wardrobe, desk and a chair as a minimum.

The luxuries bathroom is fitted with a shower, W/C and a sink, and is finished to a modern standard.



Directions

Viewings

Viewings by arrangement only. Call 1157042554 to make an appointment.

EPC Rating:
D

| Energy Efficiency Rating | | |
|---|-------------------------|-----------|
| | Current | Potential |
| Very energy efficient - lower running costs | | |
| (92 plus) A | | |
| (81-91) B | | |
| (69-80) C | | |
| (55-68) D | 65 | |
| (39-54) E | | |
| (21-38) F | | |
| (1-20) G | | |
| Not energy efficient - higher running costs | | |
| England & Wales | EU Directive 2002/91/EC | |