



**6 Marine Terrace, Criccieth, LL52 0EF**  
**£400,000**

Being beside the seaside does not get better than this. A ground floor apartment directly adjacent to the west beach of Criccieth, it would take no more than a matter of seconds to set your paddleboard in the water.

Being beside the seaside does not get better than this. A ground floor apartment directly adjacent to the west beach of Criccieth, it would take no more than a matter of seconds to set your paddleboard in the water.

The property offers a communal entrance with a separate door leading into the apartment. A splendid bay window is a feature of the lounge area with views out to sea of course. Additionally affording a stylish fireplace featuring a multifuel burner, wood laminate flooring, traditional ceiling rose and an open area leading to the dining kitchen.

The kitchen is modern and well-appointed with a range of built-in appliances. A double-glazed window allows for an abundance of light and features views to the rear courtyard.

From the kitchen heading to the rear of the apartment you will find a rear hall, allowing access to the rear courtyard, stairs to the first floor and understairs storage. A spacious area which could ideally offer an alternative use, for example a study.

A double bedroom ensues, affording a double-glazed window to the courtyard. A further room features beyond the bedroom and would make an excellent dressing room which in turn leads to the shower room. The flooring in the dressing room and en-suite is laid to slate tile. The dressing room has an abundance of storage and plenty of light is offered from an overhead window.

The shower room is tiled and features a walk-in shower, in addition to a low-level WC and a wash basin.

The wooden staircase leads to the first floor, situated to the rear of the property. The most rear space being another double bedroom with windows to two aspects.

A family style bathroom is situated on this floor, fitted with a low-level WC and a pedestal wash basin. The bath is panelled with complementary tiling found on the walls and light is offered from a double-glazed window to the side.

Externally the property has a side courtyard which in turn leads up into the landscaped garden, decorated with a range of shrubs and modest trees, accompanied by strategically placed seating areas. Access to the parking space can be found here too.

Criccieth

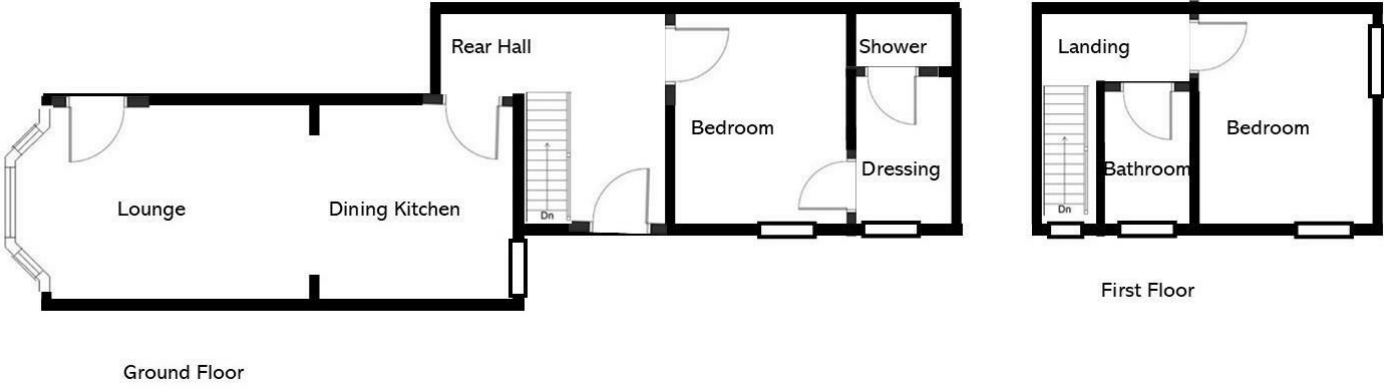
The town styles itself the "Pearl of Wales on the Shores of Snowdonia"

Criccieth is a town and community on the Llyn Peninsula in the Eifionydd area of Gwynedd in Wales. The town lies five miles (8 km) west of Porthmadog, nine miles (14 km) east of Pwllheli and 17 miles (27 km) south of Caernarfon.

If your plan is to hang up the car keys and switch off, it does not get better than this! Stroll out of the door to

the beach, castle, shops and restaurants or if exploring takes your fancy, the harbour town of Porthmadog or the magical Portmeirion village and gardens are only a 10-minute drive away. Why not take a trip over to Harlech? Explore the castle, call on the new visitor centre or enjoy a round of golf at the renowned Royal St Davids Golf Club. Along the Llyn Peninsula, you can discover the traditional seaside resort of Pwllheli and the water sports centre at Abersoch. The famous Ty Coch in Morfa Nefyn, is just 30 minutes' drive away too.

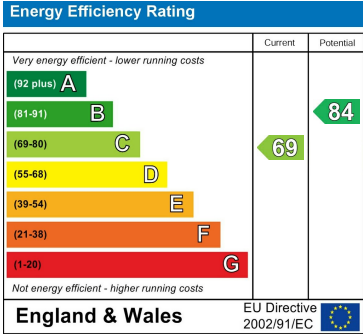
Floor Plan



Area Map



Energy Efficiency Graph



These particulars, whilst believed to be accurate are set out as a general outline only for guidance and do not constitute any part of an offer or contract. Intending purchasers should not rely on them as statements of representation of fact, but must satisfy themselves by inspection or otherwise as to their accuracy. No person in this firms employment has the authority to make or give any representation or warranty in respect of the property.