

**\*\*BRAND NEW\*\***

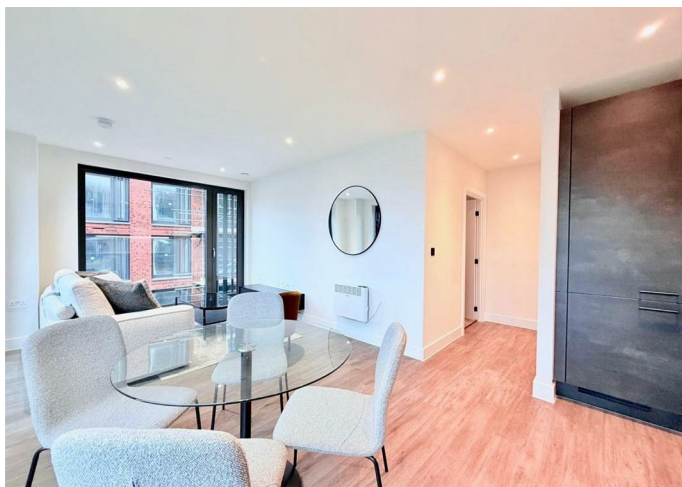


# 502 ASHTED WHARF, GLASSWATER LOCKS 1 PITT STREET,

## £1,395 PCM

### FEATURES

- Residents Gym, Concierge, Library, Games Room & More!
- Dual Aspect & South Facing
- Luxury Development By Berkeley Group
- Fifth Floor With Balcony
- Brand New Home & Furniture
- Walking Distance To New Street / Bullring



# 2 Bedroom Apartment Located In Birmingham City Centre

Step into luxury living with this brand-new apartment at Glasswater Locks, a landmark canalside development in the heart of Eastside, Birmingham, just moments from Aston University and Birmingham City University.

Finished in 2025, this stunning two-bedroom, two-bathroom home offers 678 sq ft of beautifully designed living space. The layout has been thoughtfully planned to maximise space and natural light, creating a bright and welcoming atmosphere from the moment you walk in.

The apartment comes fully furnished with high quality interior design pieces included, so you can move straight in and start enjoying your new home from day one.

Relax or entertain in the spacious open plan reception area, complete with floor-to-ceiling windows that flood the space with light. Two sleek bathrooms finished to a high specification provide style and convenience in equal measure.

Residents at Glasswater Locks enjoy access to a range of top-class amenities including a concierge, state-of-the-art gym, private cinema room, stylish coffee lounge and a peaceful library, creating the perfect blend of comfort and convenience.

Call us on

**0121 667 0343**

[hello@swift-property.co.uk](mailto:hello@swift-property.co.uk)

[www.swift-property.co.uk](http://www.swift-property.co.uk)

**Council Tax Band**

**C**



Agents Note: Whilst every care has been taken to prepare these particulars, they are for guidance purposes only. All measurements are approximate and are for general guidance purposes only and whilst every care has been taken to ensure their accuracy, they should not be relied upon and potential buyers are advised to recheck the measurements.