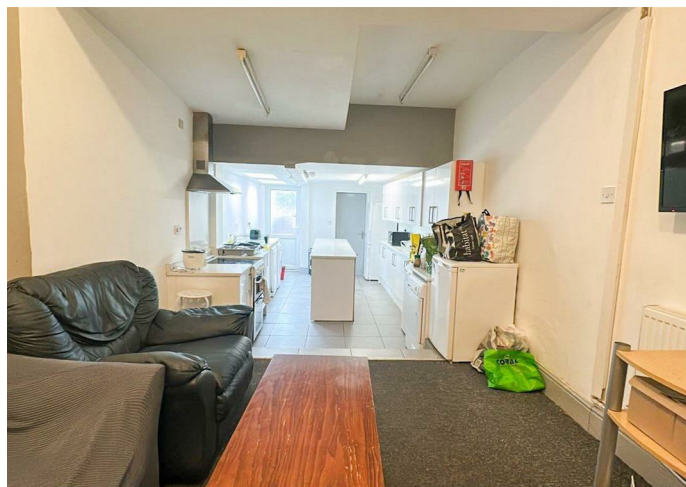


STUDENT
ACCOMMODATION



House - Mid Terrace

**161 TIVERTON
ROAD,
BIRMINGHAM, B29
6BS**

**£3380 PCM /
£130 PPPW**

FEATURES

- AVAILABLE FOR 25/26 ACADEMIC YEAR
- FULLY FINISHED
- LARGE BEDROOMS WITH ENSUITES
- £130 PPPW
- PERFECT FOR STUDENTS
- NEWLY REFIRBISHED THROUGHOUT



5 Bedroom House - Mid Terrace located in Birmingham

OVER 60 STUDENT HOUSES AVAILABLE – MIXTURE OF 1, 2, 3, 4, 5, 6, 7 & 8 BEDROOM PROPERTIES – ENQUIRE NOW FOR MORE INFORMATION

£130 PPPW | 5 BEDROOM 5 ENSUITE | AVAILABLE FOR THE 25/26 ACADEMIC YEAR | TENANCY START DATE 01/07/2025

Discover this recently refurbished and spacious 5 Bedroom student home, designed to provide the perfect balance of comfort, practicality, and convenience.

Property features include:

- Large double bedrooms, each fully furnished with study desks, pinboards, mirrors, and plenty of storage
- Modern bathrooms, finished to a high standard
- Contemporary kitchen with fridge/freezer, oven with ceramic hob, microwave, and washer/dryer
- Comfortable lounge area with sofas, dining table, and flat-screen TV
- Double glazing, gas central heating, burglar alarm, and full smoke detection system

Location:

- 3-minute walk to the train station
- Close to Selly Oak Retail Park, shops, cafes, and amenities
- Easy access to transport links and university campuses

This home has been designed specifically for students, offering everything you need for stress-free living with all bills included (subject to fair usage).

Holding deposit: £100 per person

Call us on

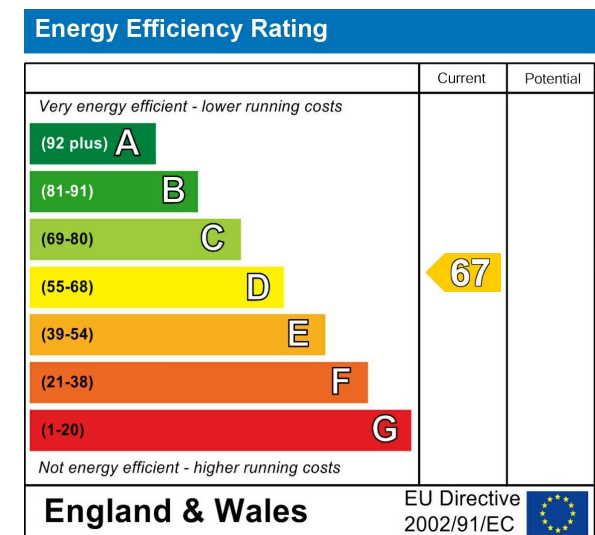
0121 667 0343

hello@swift-property.co.uk

www.swift-property.co.uk

Council Tax Band

B



Agents Note: Whilst every care has been taken to prepare these particulars, they are for guidance purposes only. All measurements are approximate and are for general guidance purposes only and whilst every care has been taken to ensure their accuracy, they should not be relied upon and potential buyers are advised to recheck the measurements.

