

FULLY FURNISHED

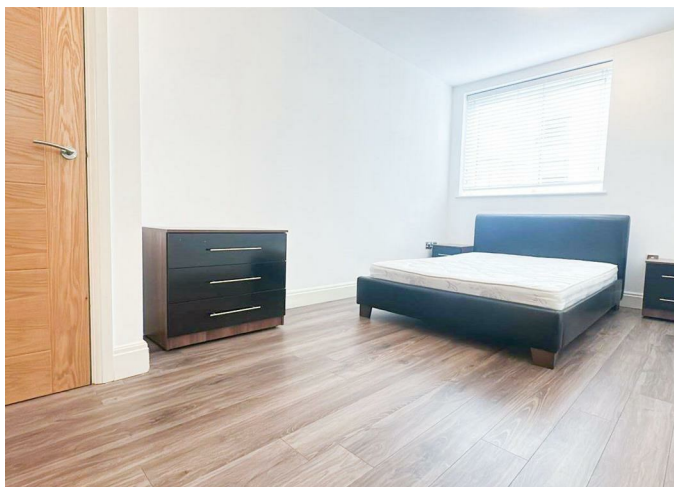
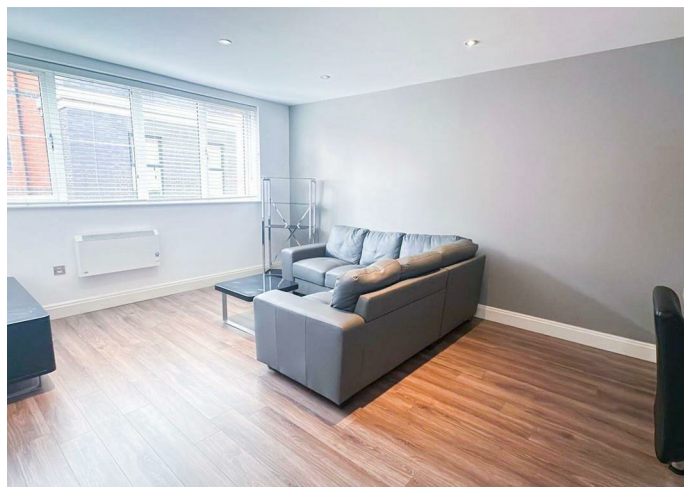


THE MINT ICKNEILD STREET BIRMINGHAM B18 6AD

£900 PCM

FEATURES

- AVAILABLE FROM 10TH NOVEMBER
- ONSITE MAINTENANCE TEAM & SECURITY
- NO CLEAN AIR ZONE CHARGE
- SECURE UNDERGROUND PARKING
- HIGH SPECIFICATION THROUGHOUT
- SOUGHT-AFTER DEVELOPMENT



1 Bedroom Apartment located in Birmingham

Welcome to this immaculately presented one bedroom apartment in the heart of The Mint - a modern, gated development built on one of Birmingham's most historic sites. This is city living at its finest.

Step inside to find a generously sized double bedroom, fully furnished with high-quality, stylish furniture and finished with built-in wardrobes. The open-plan kitchen and lounge is bright, spacious and thoughtfully designed - ideal for entertaining or simply relaxing in comfort.

Perfectly located within walking distance of City Hospital, the vibrant Jewellery Quarter, and key transport links, this apartment is ideal for professionals and city lovers alike.

Additional features include:

Optional secure parking available at £50 per month

On-site maintenance team for added convenience

A clean, quiet and secure development with a strong community feel

Please note: Photos are for illustrative purposes only. The layout and furnishings may vary, but all reflect the same high standard of finish.

Call us on


0121 667 0343

hello@swift-property.co.uk

www.swift-property.co.uk

Council Tax Band

C

Energy Efficiency Rating		
	Current	Potential
Very energy efficient - lower running costs		
(92 plus) A		
(81-91) B		
(69-80) C		
(55-68) D		
(39-54) E		
(21-38) F		
(1-20) G		
Not energy efficient - higher running costs		
England & Wales		EU Directive 2002/91/EC 

Agents Note: Whilst every care has been taken to prepare these particulars, they are for guidance purposes only. All measurements are approximate and are for general guidance purposes only and whilst every care has been taken to ensure their accuracy, they should not be relied upon and potential buyers are advised to recheck the measurements.

