

INVESTMENT
OPPORTUNITY



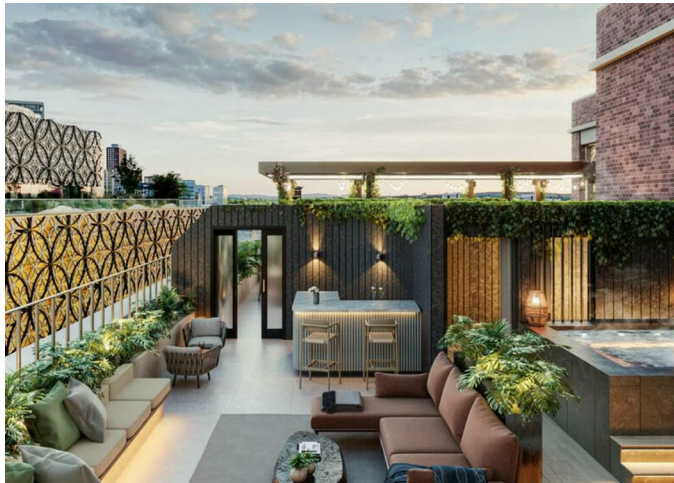
EDITION, 1 BRINDLEY ROAD, BIRMINGHAM, B1 2BS

Asking price

£303,551

FEATURES

- Birmingham City Centre's First Residents Swimming Pool!
- Wellness Suite, Residents' Lounge & Gym
- A bold statement in design, lifestyle and prestige
- Q2 2027 Completions - secure your future now!
- Renowned UK developer with an eye for excellence
- Located Between The Mailbox & The Financial District



Exceptional Development Located In Birmingham City Centre

Call us on

0121 667 0343

hello@swift-property.co.uk

www.swift-property.co.uk

EDITION
BIRMINGHAM

Welcome to Edition, Birmingham's Most Luxurious Development

Be part of something extraordinary. Edition is not just a place to live. It is a statement. This is Birmingham City Centre's first residential building with its own Private Swimming Pool. A landmark moment that sets a bold new standard for luxury living.

Created by one of the UK's most renowned developers, every inch of this building is designed to impress. From its striking architecture to its unrivalled amenities, Edition brings true Five-Star Living to the heart of the city.

Inside, you'll find a Private Residents-Only Swimming Pool, a State-of-the-Art Gym and Wellness Suite, beautifully styled lounge and co-working spaces, landscaped courtyard gardens and a 24-Hour Concierge offering hotel-level service.

This isn't just an apartment. It is a Statement Piece. The most Luxurious Address in Birmingham. A symbol of the city's new era. Confident, ambitious and built to stand out.

Investment Highlights

- Prices starting from just £303,551
- Completions due from Q2 2027
- Strong projected rental returns of approximately 6%
- Up to 12% capital growth anticipated during construction
- Developed by a trusted and well-established UK developer

Leasehold Information

- Lease Term: 250 years
- Ground Rent: Peppercorn (no charge)
- Service Charge: Approx. £4.00 per sq ft



Park Residence — One Bed Type 2

Agents Note: Whilst every care has been taken to prepare these particulars, they are for guidance purposes only. All measurements are approximate and are for general guidance purposes only and whilst every care has been taken to ensure their accuracy, they should not be relied upon and potential buyers are advised to recheck the measurements.

