

FREEHOLD



House - Mid Terrace

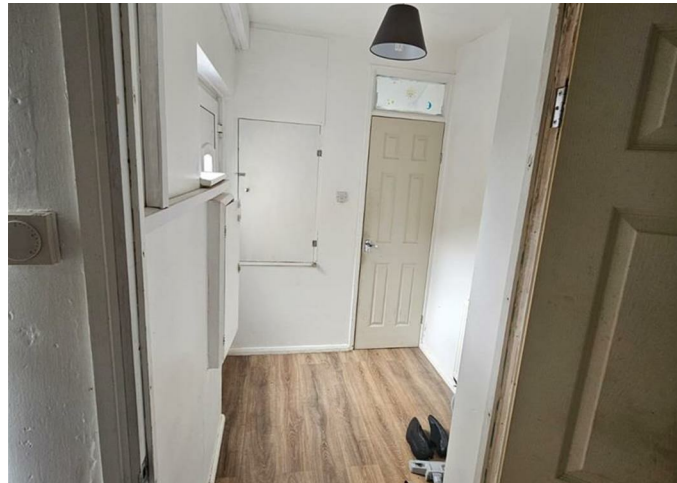
# 67 FULMAR LANE, WELLINGBOROUGH NN8 4AF

Asking price

## £175,000

### FEATURES

- Beautifully modernised throughout
- Three spacious double bedrooms
- Two generously sized reception rooms
- Ideal for families and investors alike
- Convenient downstairs WC
- Handy built-in storage throughout



# 3 Bedroom House - Mid Terrace located in Wellingborough

Nestled in the charming area of Fulmar Lane, Wellingborough, this newly refurbished mid-terrace house presents an excellent opportunity for both families and investors alike. Spanning an impressive 1,066 square feet, the property boasts two inviting reception rooms, perfect for entertaining guests or enjoying quiet family evenings.

The home features three spacious bedrooms, providing ample room for relaxation and personal space. The well-appointed bathroom ensures convenience for the entire household. The recent refurbishment has revitalised the property, offering a fresh and modern aesthetic that is sure to appeal to a wide range of buyers.

This delightful residence is ideally suited for families seeking a comfortable and welcoming environment, as well as investors looking for a promising addition to their portfolio. With its generous living space and prime location, this property is a rare find in today's market.

Do not miss the chance to make this lovely house your new home or investment opportunity.



Call us on  
**0121 667 0343**  
[hello@swift-property.co.uk](mailto:hello@swift-property.co.uk)  
[www.swift-property.co.uk](http://www.swift-property.co.uk)

**Council Tax Band**  
**A**

Energy Efficiency Rating		
	Current	Potential
Very energy efficient - lower running costs		
(92 plus) <b>A</b>		
(81-91) <b>B</b>		
(69-80) <b>C</b>		
(55-68) <b>D</b>		
(39-54) <b>E</b>		
(21-38) <b>F</b>		
(1-20) <b>G</b>		
Not energy efficient - higher running costs		
	73	
England & Wales		EU Directive 2002/91/EC

Agents Note: Whilst every care has been taken to prepare these particulars, they are for guidance purposes only. All measurements are approximate and are for general guidance purposes only and whilst every care has been taken to ensure their accuracy, they should not be relied upon and potential buyers are advised to recheck the measurements.

