

LEASEHOLD



Flat - Purpose Built (EPC Rating: B)

APARTMENT 7, SQUARE ON THE SQUARE

Asking price

£149,950



1



1



1



B

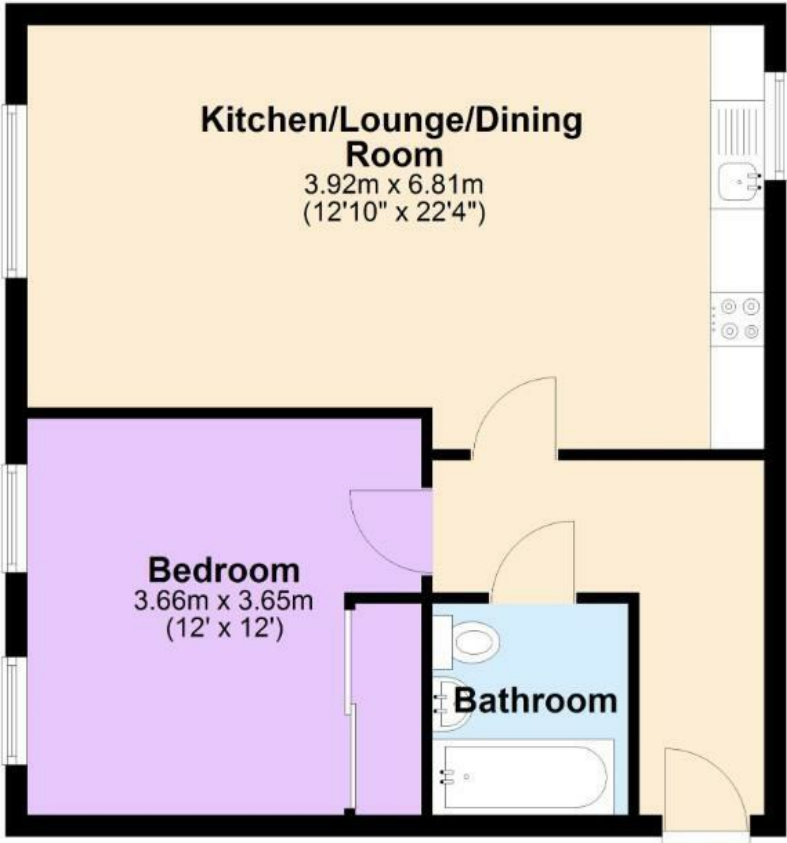
1 Bedroom Flat - Purpose Built located in Birmingham

Nestled in the vibrant heart of Birmingham, this charming purpose-built flat on Caroline Street offers a delightful blend of modern living and convenience. Spanning an impressive 538 square feet, the property features a well-appointed reception room that provides a welcoming space for relaxation and entertainment.

The flat comprises one spacious bedroom, perfect for a peaceful retreat, and a contemporary bathroom designed with comfort in mind. Built in 2006, the property benefits from modern construction standards, ensuring a comfortable and energy-efficient living environment.

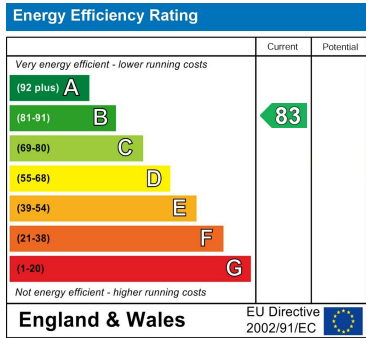
Residents will appreciate the flat's prime location, which places them within easy reach of Birmingham's bustling amenities, including shops, restaurants, and public transport links. This property is ideal for first-time buyers, young professionals, or those seeking a low-maintenance lifestyle in a thriving urban setting.

With its appealing features and excellent location, this flat on Caroline Street presents a wonderful opportunity for anyone looking to embrace city living in Birmingham. Don't miss the chance to make this delightful property your new home.



Council Tax Band
B
Energy Performance Graph

Call us on
0121 667 0343
hello@swift-property.co.uk
www.swift-property.co.uk



Agents Note: Whilst every care has been taken to prepare these particulars, they are for guidance purposes only. All measurements are approximate and are for general guidance purposes only and whilst every care has been taken to ensure their accuracy, they should not be relied upon and potential buyers are advised to recheck the measurements.