

2 Knowlwood Road,

Guide Price £460,000

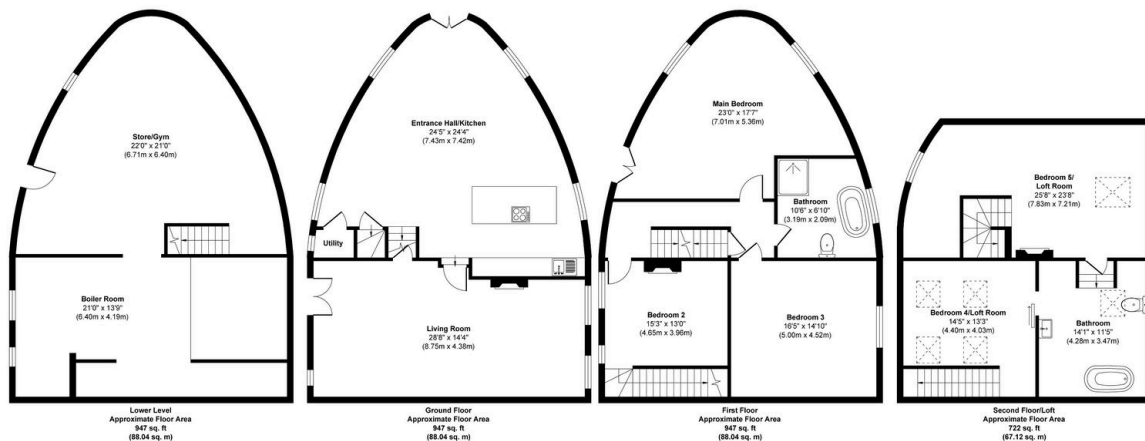
4 2 1



- Unique four bedroom property with character
- Original features throughout
- Close proximity to Todmorden
- Useful extra living space/office to second floor
- Rail links for Manchester and Leeds nearby
- Eco Friendly home
- Offered with NO ONWARD CHAIN
- Feature sash windows with double glazing
- Ideal location for schools and amenities



2 Knowlwood Road , Todmorden OL14 6PB



Approx. Gross Internal Floor Area 3563 sq. ft / 331.24 sq. m

Illustration for identification purposes only, measurements are approximate, not to scale.

Produced by Elements Property

A fantastic opportunity to own this beautifully presented four-bedroom semi-detached home, rich in history, character, and original features, yet thoughtfully renovated to a high standard by the current owners. This energy-efficient property combines charm with style and modern living. The property offers off road parking and a well maintained garden. Situated in close proximity to Todmorden, a convenient location with easy access to local amenities, great schools and transport links. Available with NO ONWARD CHAIN, viewing highly recommended! Todmorden, a vibrant market town surrounded by stunning countryside. Todmorden is known for its independent cafés, lively market, and strong community spirit - offering the perfect balance of outdoor adventure and relaxed lifestyle.

