

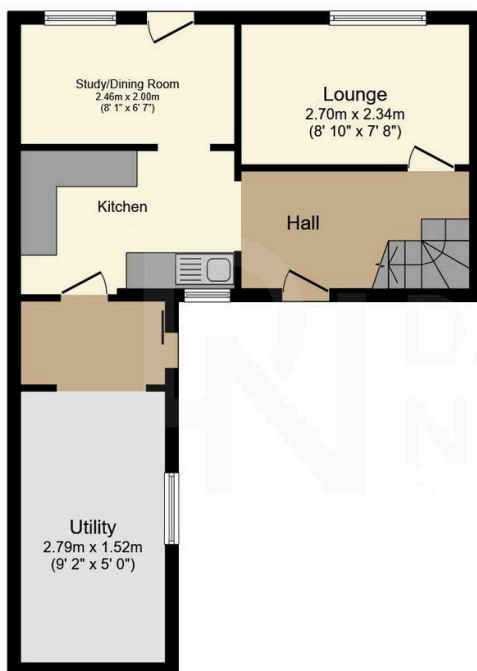
10 Glen Avenue, Guide Price £200,000

2 1 2



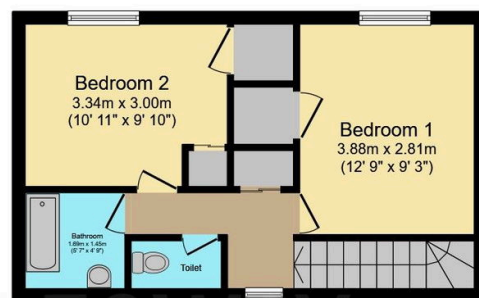
Lovely, two DOUBLE bedroom mid-terrace property in a fantastic location, set within the outskirts of the popular Yorkshire town of Todmorden. Ideally placed for easy access to local amenities, schools, surrounding countryside, road and rail links for MANCHESTER and LEEDS. This property offers: Modern living with lovely mature private gardens, patio and single garage! A ready to move in property with NO ONWARD CHAIN, book your appointment now to avoid disappointment!

- No chain
- Two DOUBLE bedrooms
- Utility room
- Ample storage throughout
- Gas central heating
- Off road parking
- Fantastic location - close to train station
- Multi fuel burner
- Well established gardens
- Upvc double glazing



Ground Floor

Floor area 47.7 sq.m. (513 sq.ft.)



First Floor

Floor area 32.8 sq.m. (353 sq.ft.)

Total floor area: 80.5 sq.m. (866 sq.ft.)

This floor plan is for illustrative purposes only. It is not drawn to scale. Any measurements, floor areas (including any total floor area), openings and orientations are approximate. No details are guaranteed, they cannot be relied upon for any purpose and do not form any part of any agreement. No liability is taken for any error, omission or misstatement. A party must rely upon its own inspection(s). Powered by www.Propertybox.io