



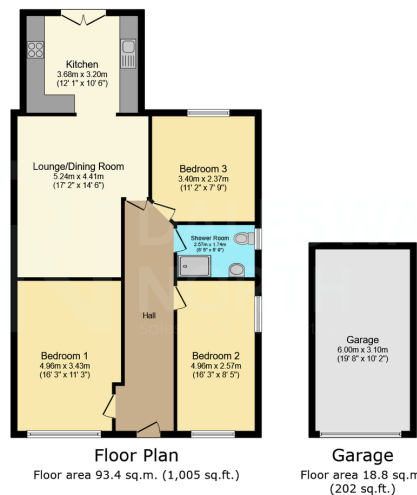
15 Woodbank Road,
Guide Price £290,000

3 1 1



Dalesway North are proud to present a recently renovated three bedroom true bungalow, offered with NO CHAIN! Located in the highly sought after area of Hollingworth Lake, this property is ready to move straight into. The bungalow offers a modern open-plan layout with lots of natural light and French doors to rear patio/ garden. The current owners have renovated the property to a very good standard. The property briefly comprises: Entrance hallway, two double and one single bedroom. Shower room. Open plan kitchen, living and dining area. Externally there are low maintenance gardens to the front and rear of the property. Ample space for off road parking and garage with power. Conveniently located to the centre of Littleborough, which provides plenty of local amenities including a number of supermarkets, excellent schools, bars and restaurants. Easy access to road and rail links including Smithybridge train station for Leeds and Manchester and M62 / M60 motorways.





This floor plan is for illustrative purposes only. It is not drawn to scale. Any measurements, floor areas (including any total floor area), openings and orientations are approximate. No details are guaranteed, they cannot be relied upon for any purpose and do not form any part of any agreement. No liability is taken for any error, omission or misstatement. A party must rely upon its own inspection(s). Powered by www.propertybox.co.uk

- Prime location - close to Hollingworth Lake
- Recently renovated
- Open plan living
- Off road parking
- Low maintenance gardens
- True three bedroom bungalow
- No chain
- Modern shower room
- Separate garage with power

