





# 14 Northedge Meadow, Idle

Guide Price £320,000

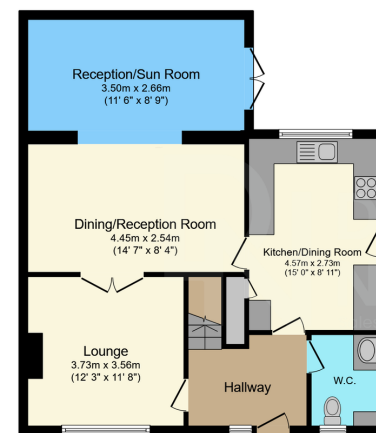
4 2 2



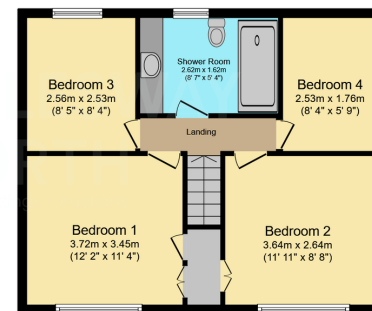


- Sunroom extension with patio doors
- Enclosed rear garden
- Four bedrooms
- Downstairs WC
- Easy access to public transport
- Modern shower room
- Single garage and driveway
- Breakfast Kitchen
- Great location local schools
- Well presented property





**Ground Floor**  
Floor area 71.9 sq.m. (774 sq.ft.)



**First Floor**  
Floor area 57.2 sq.m. (616 sq.ft.)

Total floor area: 129.1 sq.m. (1,390 sq.ft.)

This floor plan is for illustrative purposes only. It is not drawn to scale. Any measurements, floor areas (including any total floor area), openings and orientations are approximate. No details are guaranteed, they cannot be relied upon for any purpose and do not form any part of any agreement. No liability is taken for any error, omission or misstatement. A party must rely upon its own inspection(s). Powered by www.propertybox.io

Four bedroom EXTENDED well presented DETACHED property with delightful ENCLOSED rear garden, garage and driveway. SUPERB location for local schools, amenities and public transport routes. Modern BREAKFAST kitchen, TWO reception rooms and SUNROOM! Ideal FAMILY house offering versatile living space set within a popular residential development. Viewing highly recommended.