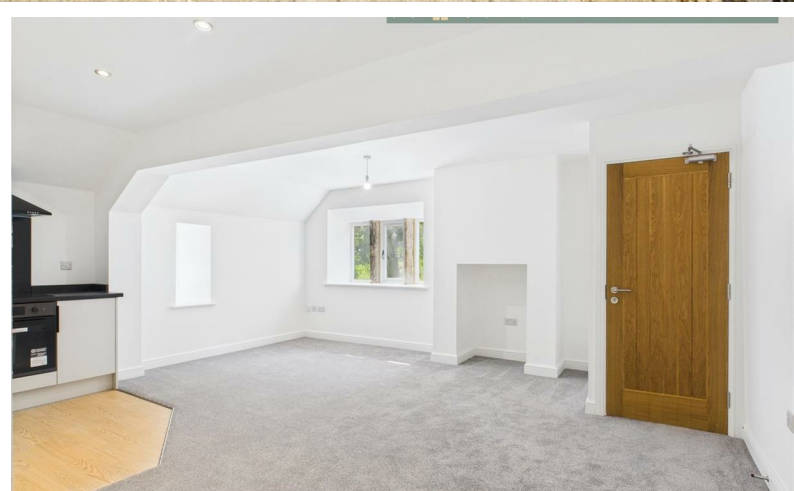
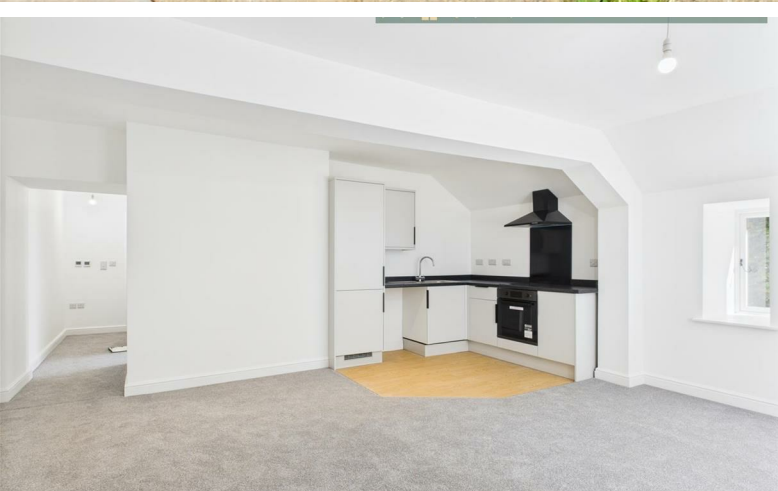




**MCDERMOTT & CO**  
THE PROPERTY AGENTS



**£1,800 Per Month**

47 New Barn Bradburys Lane, Greenfield, OL3 7ND

# 47 New Barn Bradburys Lane, Greenfield, OL3 7ND

\*LOCATION LOCATION LOCATION\* RARE OPPORTUNITY\* 2 DOUBLE BEDROOM APARTMENT\* 3 ALLOCATED PARKING SPACES\* FULLY RENOVATED\*SET IN THE DOVESTONES AREA\*

We are delighted to bring to the rental market this rare opportunity to occupy a fully renovated 2 double bedroom apartment situated within the sought after Dovestones area of Greenfield. Set within private land accessed via private driveway leading to parking area where each apartment has 3 allocated spaces, approximately 10 stone steps lead upto the main front door which opens to shared vestibule entrance for 2 apartments, private front door opens into spacious open plan lounge and kitchen area complete with integrated fridge freezer, washing machine, oven, induction hob & over head extractor, a hallway leads to the 2 double bedrooms and walk in wet room. Having undergone a full renovation everything is in brand new condition with neutral scheme, carpets & decor right through. The apartment is warmed by iHelios infrared heating the perfect solution for modern, energy-efficient homes. Delightful views from every window throughout overlooking the beautiful Saddleworth countryside offering pure tranquillity, beauty and privacy of the surroundings whilst still being within walking distance of Greenfield train station and all local amenities.

## Shared entrance

shared with only 1 other apartment, vestibule entrance,

garden areas surround the property with each apartment having 3 allocated parking spaces on the purpose built parking area.

## Open Plan Lounge & Kitchen

Spacious lounge with bullion windows, new carpets, open to kitchen area which comprises fully fitted units and complimentary work tops, 1 1/2 bowl sink with drainer, oven, induction hob & over head extractor, integrated fridge freezer, washing machine.

## Hallway

newly carpeted

## Bedroom 1

newly carpeted, bullion windows

## Bedroom 2

newly carpeted, bullion windows.

## Wet room

Three piece suite comprising low level WC, sink and walk in shower.

## External

Within private land accessed via private driveway delightful views from every angle overlooking the beautiful Saddleworth countryside offering pure tranquillity, beauty and privacy of the surroundings whilst still being within walking distance of Greenfield train station and all local amenities. Large shared

## Directions

