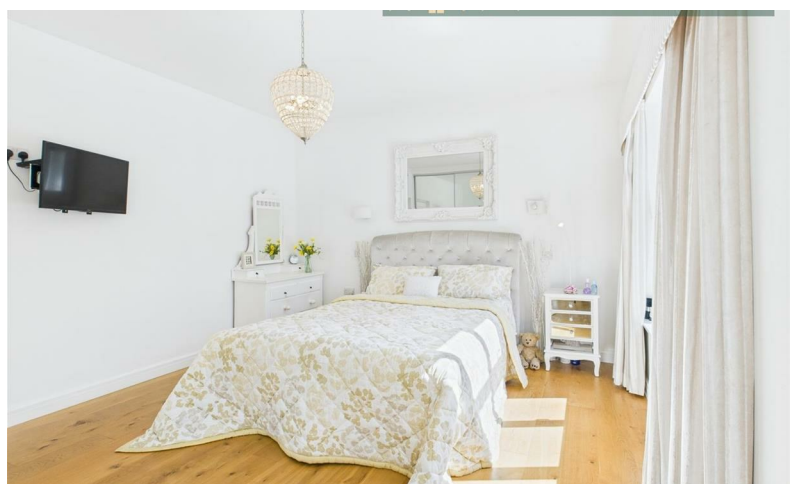
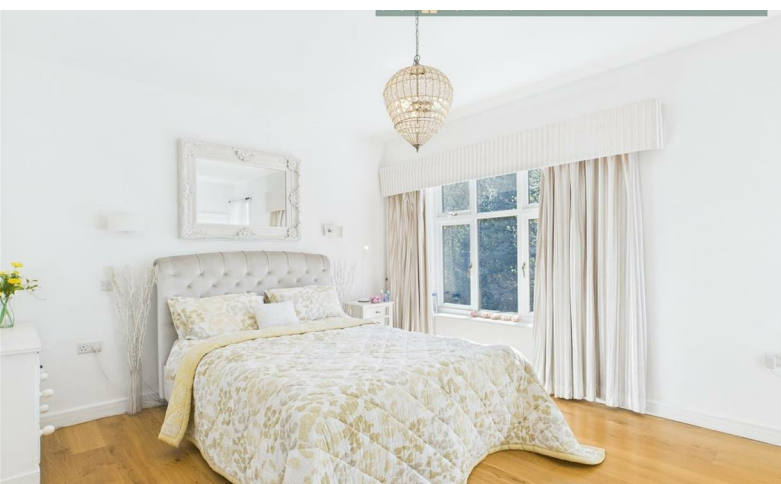




**MCDERMOTT & CO**  
THE PROPERTY AGENTS



**£795 (From) Per Month**

12 St. Marys Drive, Greenfield, Saddleworth, OL3 7DT

# 12 St. Marys Drive, Greenfield, Saddleworth, OL3 7DT

\*\*\*ROOM WITH EN-SUITE £795 PCM\*\*\*BILLS TO BE DISCUSSED WITH LANDLORD\*\*\*

McDermott & Co are please to bring to the market this rooms to let rental property nestled in the charming area of Greenfield, Oldham, this splendid detached house on St. Marys Drive is offering one double bedroom with ensuite to rent, the room is spacious and modern with modern en-suite, this property is ideal for a professional person, the house will be shared with a lady.

The layout of the property includes two inviting reception rooms, providing versatile areas to relax and work from.

The house boasts three well-appointed bathrooms, ensuring convenience for all residents. Each room is designed with a focus on both functionality and aesthetics.

## Kitchen

22'6 x 12'8 (6.86m x 3.86m)  
Rear facing kitchen diner with a wide range of wall and base units with matching complimentary white work tops. Kitchen comes with integrated appliances, double stove and tiled flooring throughout, feature light fitting and spotlights. Spacious dining area with table/chairs. Kitchen diner has direct excess through bi folding doors to a south facing decked sitting area overlooking the well-kept grassed garden area. Kitchen diner leads into the lounge and a door to the hallway.

## Lounge

10'7 x 15'10 (3.23m x 4.83m)  
Front facing lounge with neutral decor, floor tiled throughout leading from the kitchen, Fireplace with feature surrounding and large front window, allowing lots of natural light to fill the room. Door leading to the hallway.

## Bedroom 1

13'8 x 12'9 (4.17m x 3.89m)  
Rear facing window, double bedroom, neutral decor, laminated flooring with under floor heating. Fitted wardrobe and access to its own en-suite.

## En-suite

6'5 x 6'10 (1.96m x 2.08m)  
Rear facing, white tiled floor and walls, compromising of white basin, toilet and enclosed shower, Stainless steal heated towel rail, neutral decor, spotlights.

## Bedroom 2

9'11 x 11'6 (3.02m x 3.51m)  
Front facing window, double bedroom with neutral decor, laminated flooring. Radiator and feature fireplace with access to main bathroom.

## Main bathroom

5'11 x 10'3 (1.80m x 3.12m)  
Side facing family bathroom, compromising of white built in bath, white integrated toilet and separate basin, with enclosed shower, tiled floors and walls, heated stainless steal towel rail and storage.

## Directions

