



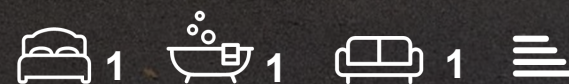
GREENHILL



Myles Court

Goffs Oak, Waltham Cross, EN7 5PP

Guide price £300,000



Myles Court, Goffs Oak, Waltham Cross, EN7 5PP

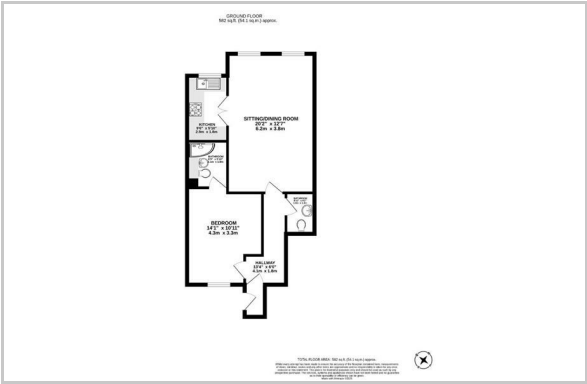
This beautifully refurbished one-bedroom ground floor maisonette is perfectly positioned in the heart of Goffs Oak, just a short and level walk to the village shops and everyday amenities. Thoughtfully updated throughout, the property offers modern interiors and a wonderfully convenient lifestyle, making it ideal for first-time buyers, downsizers, or investors.



Area Map



Floor Plan



Energy Efficiency Graph

Energy Efficiency Rating			Environmental Impact (CO ₂) Rating		
	Current	Potential		Current	Potential
Very energy efficient - lower running costs			Very environmentally friendly - lower CO ₂ emissions		
(92 plus) A			(92 plus) A		
(81-91) B			(81-91) B		
(69-80) C			(69-80) C		
(55-68) D			(55-68) D		
(39-54) E			(39-54) E		
(21-38) F			(21-38) F		
(1-20) G			(1-20) G		
Not energy efficient - higher running costs			Not environmentally friendly - higher CO ₂ emissions		
England & Wales	EU Directive 2002/91/EC		England & Wales	EU Directive 2002/91/EC	

These particulars, whilst believed to be accurate are set out as a general outline only for guidance and do not constitute any part of an offer or contract. Intending purchasers should not rely on them as statements of representation of fact, but must satisfy themselves by inspection or otherwise as to their accuracy. No person in this firms employment has the authority to make or give any representation or warranty in respect of the property.