



44 Hill Rise
Cuffley, Potters Bar, EN6 4EJ
Offers in excess of £1,250,000

6 4 3 C

44 Hill Rise, Cuffley, Potters Bar, EN6 4EJ

Guide Price- £1,300,000 - £1,350.000

Greenhill Estates welcome to the market this impressive six bedroom detached family home occupying an enviable elevated position on one of Cuffley’s most desirable roads, spanning approximately 3,507 sq ft across three floors. Boasting panoramic views of the surrounding countryside, the property blends spacious, versatile living with luxurious finishes throughout. With generous living and entertaining spaces, a show-stopping conservatory, beautifully landscaped gardens, and superb transport links, this is an ideal home for growing families or those looking for a slice of village life without compromise.



Step Inside:

Step Outside:

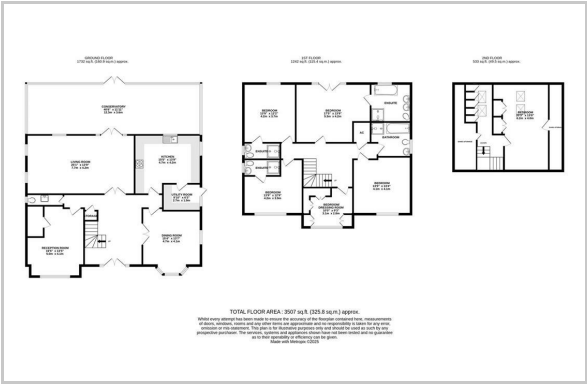
Location:



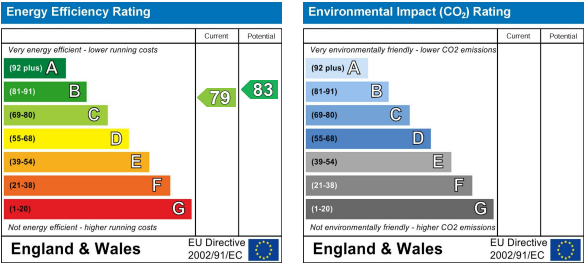
Area Map



Floor Plan



Energy Efficiency Graph



These particulars, whilst believed to be accurate are set out as a general outline only for guidance and do not constitute any part of an offer or contract. Intending purchasers should not rely on them as statements of representation of fact, but must satisfy themselves by inspection or otherwise as to their accuracy. No person in this firms employment has the authority to make or give any representation or warranty in respect of the property.