

FLAT 16, 67, BRISTOL HOUSE LOWER SLOANE STREET, LONDON, SW1W 8DD
£1,950 PER MONTH
COUNCIL TAX BAND: D

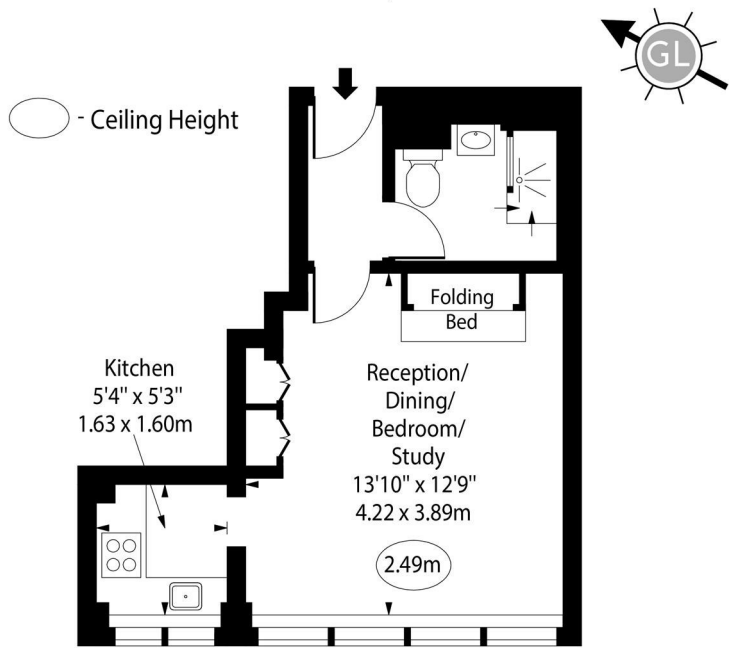
TRISPENS



A BEAUTIFULLY PRESENTED MODERN STUDIO APARTMENT SITUATED MOMENTS FROM SLOANE SQUARE. FINISHED TO A HIGH STANDARD THROUGHOUT, THIS SLEEK AND STYLISH PROPERTY OFFERS CONTEMPORARY LIVING IN ONE OF LONDON'S MOST DESIRABLE LOCATIONS.

TIM LAWLER 35 EMMANUEL ROAD
LONDON
SW12 0HH
07939557155
TIM@TRISPENS.CO.UK

Bristol House,
Lower Sloane Street, SW1W



Third Floor

Approx Gross Internal Area 264 Sq Ft - 24.53 Sq M

For Illustration Purposes Only - Not To Scale
www.goldlens.co.uk
Ref. No. 018595M

