

FLAT 6, MERIDEN COURT CHELSEA MANOR STREET, LONDON, SW3 3TT
£2,250 PER MONTH
COUNCIL TAX BAND: E

TRISPENS



PLEASE ENQUIRE ONLINE ONLY THIS CHARMING FLAT ON CHELSEA MANOR STREET OFFERS A DELIGHTFUL URBAN RETREAT. SPANNING A MODEST YET EFFICIENT 398 SQUARE FEET, THE PROPERTY IS PERFECT FOR INDIVIDUALS OR COUPLES SEEKING A STYLISH LIVING SPACE IN ONE OF LONDON'S MOST DESIRABLE NEIGHBOURHOODS.

UPON ENTERING, YOU ARE GREETED BY A WELL-APPOINTED RECEPTION ROOM THAT SERVES AS A VERSATILE AREA FOR RELAXATION AND ENTERTAINING. THE FLAT FEATURES A COMFORTABLE BEDROOM, PROVIDING A PEACEFUL SANCTUARY FOR REST. THE BATHROOM IS THOUGHTFULLY DESIGNED, ENSURING BOTH FUNCTIONALITY AND COMFORT.

THE LOCATION IS TRULY EXCEPTIONAL, WITH AN ARRAY OF LOCAL AMENITIES, INCLUDING BOUTIQUE SHOPS, CAFES, AND RESTAURANTS, ALL WITHIN EASY REACH. THE VIBRANT ATMOSPHERE OF CHELSEA IS COMPLEMENTED BY ITS PROXIMITY TO BEAUTIFUL PARKS AND THE RIVER THAMES, OFFERING RESIDENTS A PERFECT BLEND OF CITY LIFE AND NATURAL BEAUTY. EMBRACE THE CHANCE TO CALL THIS DELIGHTFUL FLAT YOUR HOME IN ONE OF LONDON'S MOST SOUGHT-AFTER AREAS.

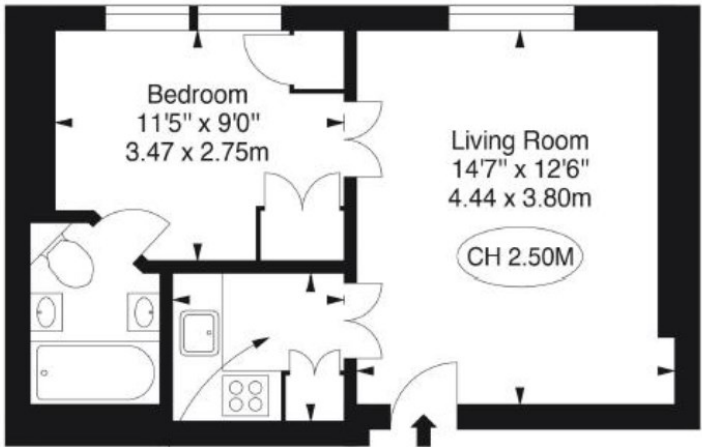
TIM LAWLER 35 EMMANUEL ROAD
LONDON
SW12 0HH
07939557155
TIM@TRISPENS.CO.UK

Meriden Court, Chelsea Manor Street



APPROX. GROSS INTERNAL AREA *
358 Ft ² - 33.26 M ²

Key :
CH - Ceiling Height



Kitchen
6'9" x 5'9"
2.05 x 1.75m

GROUND FLOOR

Energy Efficiency Rating		
	Current	Potential
Very energy efficient - lower running costs		
(92 plus) A		
(81-91) B		
(69-80) C		
(55-68) D	66	
(39-54) E		
(21-38) F		
(1-20) G		
Not energy efficient - higher running costs		
England & Wales	EU Directive 2002/91/EC	