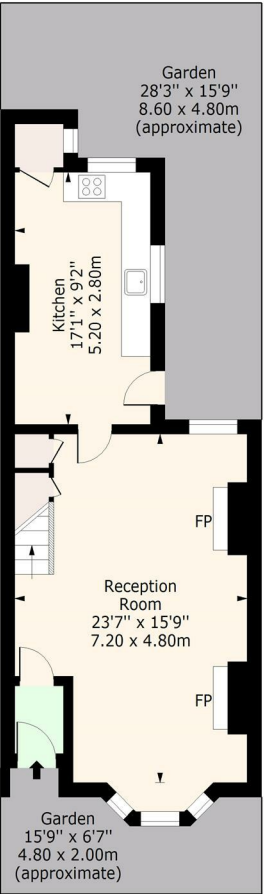


35 PROTHERO ROAD, LONDON, SW6 7LY  
£3,000 PER MONTH  
COUNCIL TAX BAND: E

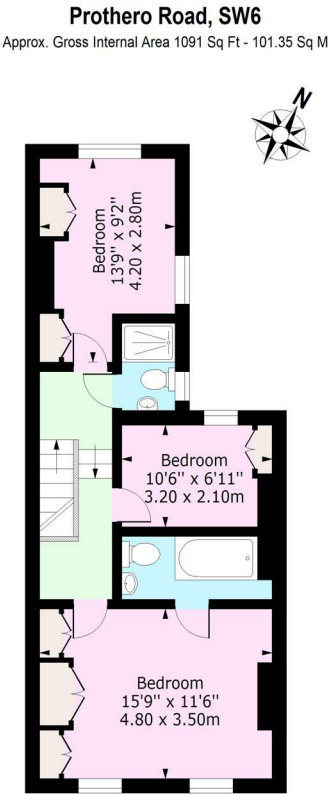
TRISPENS



A WELL-PRESENTED THREE BEDROOM, TWO BATHROOM PERIOD HOME WITH A PRIVATE PATIO GARDEN



**Ground Floor**  
Floor Area 548 Sq Ft - 50.91 Sq M



**First Floor**  
Floor Area 543 Sq Ft - 50.44 Sq M

For Illustration Purposes Only - Not To Scale  
www.lpaplus.com

TIM LAWLER 35 EMMANUEL ROAD  
LONDON  
SW12 0HH  
07939557155  
TIM@TRISPENS.CO.UK

