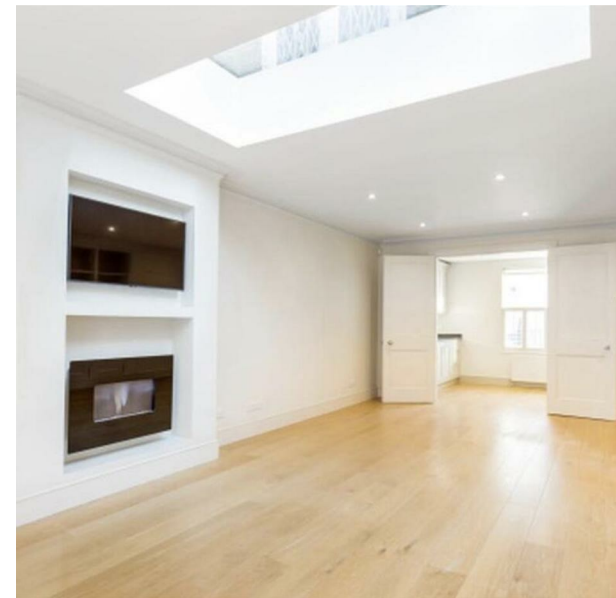


58 CHRISTCHURCH STREET, LONDON, SW3 4AR
£8,000 PER MONTH
COUNCIL TAX BAND: H

TRISPENS



LOCATED ON ONE OF CHELSEA'S PRETTIEST RESIDENTIAL STREETS, THIS THREE BEDROOM, THREE BATHROOM HOUSE IS PRESENTED IN IMMACULATE CONDITION WITH A GARDEN TO THE FRONT AND REAR AND A GOOD SIZE TERRACE ON THE FIRST FLOOR. MOMENTS TO THE KINGS ROAD AND SLOANE SQUARE.

TIM LAWLER 35 EMMANUEL ROAD
LONDON
SW12 0HH
07939557155
TIM@TRISPENS.CO.UK

