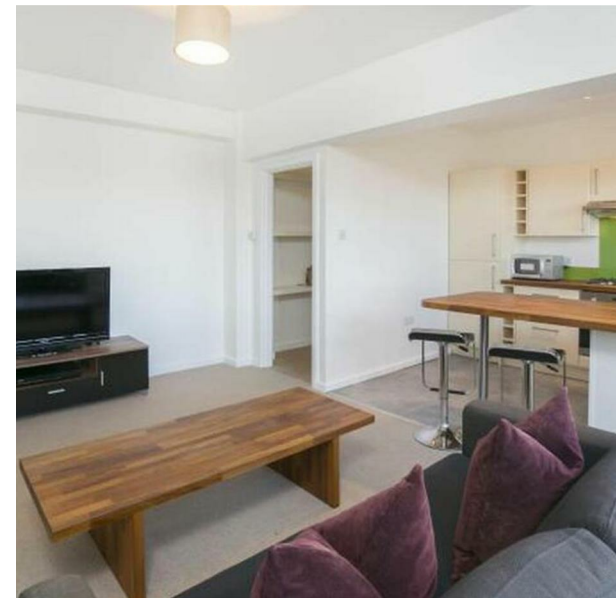


122, SWAN COURT CHELSEA MANOR STREET, LONDON, SW3 5RU
£2,750 PER MONTH
COUNCIL TAX BAND: F

TRISPENS



LOCATED IN THE HEART OF CHELSEA, THIS CHARMING FLAT ON CHELSEA MANOR STREET OFFERS A DELIGHTFUL BLEND OF COMFORT AND CONVENIENCE. SPANNING AN IMPRESSIVE 506 SQUARE FEET, THE PROPERTY FEATURES A WELL-APPOINTED RECEPTION ROOM THAT SERVES AS A PERFECT SPACE FOR RELAXATION OR ENTERTAINING GUESTS.

THE BEDROOM IS THOUGHTFULLY DESIGNED TO PROVIDE A PEACEFUL RETREAT, ENSURING RESTFUL NIGHTS AND A TRANQUIL ATMOSPHERE. THE BATHROOM IS MODERN AND FUNCTIONAL, CATERING TO ALL YOUR DAILY NEEDS WITH EASE.

THIS PROPERTY IS IDEAL FOR INDIVIDUALS OR COUPLES SEEKING A STYLISH HOME IN ONE OF LONDON'S MOST DESIRABLE NEIGHBOURHOODS. WITH ITS PRIME LOCATION, RESIDENTS CAN ENJOY EASY ACCESS TO A VARIETY OF LOCAL AMENITIES, INCLUDING SHOPS, CAFES, AND PARKS, ALL WITHIN A SHORT STROLL.

TIM LAWLER 35 EMMANUEL ROAD
LONDON
SW12 0HH
07939557155
TIM@TRISPENS.CO.UK

