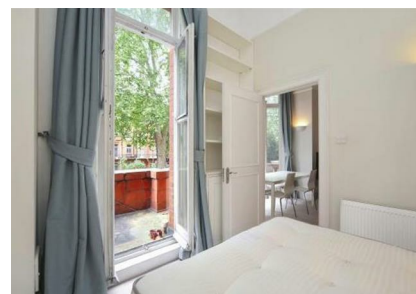
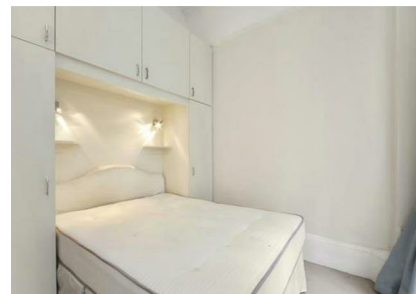


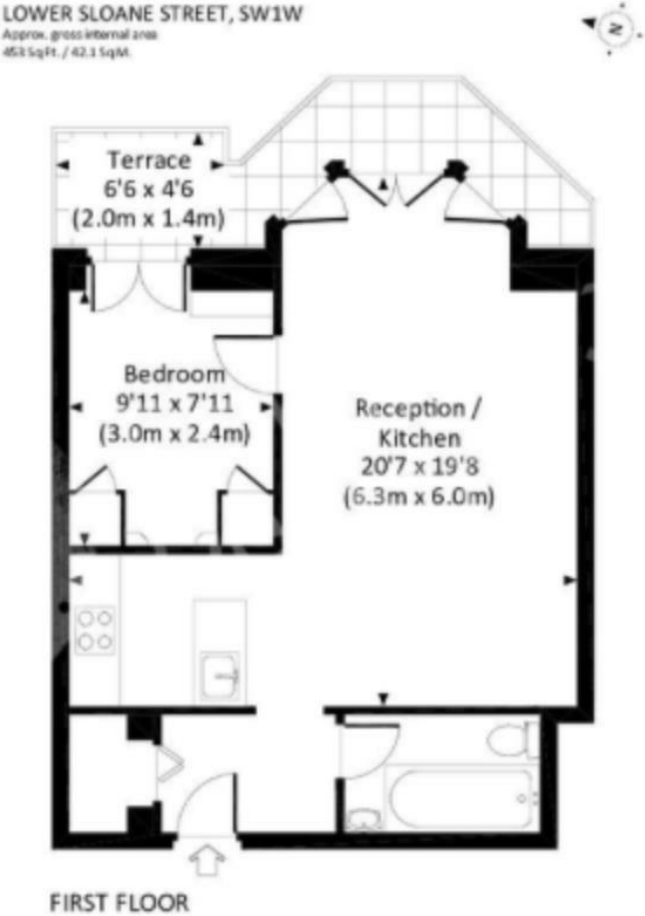
FLAT 2, 12 LOWER SLOANE STREET, LONDON, SW1W 8BJ
£2,750
COUNCIL TAX BAND: E

TRISPENS



SITUATED ON THE FIRST FLOOR OF THE HANDSOME VICTORIAN RED-BRICK BUILDING, JUST SECONDS FROM SLOANE SQUARE, THIS FABULOUS ONE BEDROOM BOAST 3 METRE HIGH CEILINGS, AND LARGE FRENCH DOORS LEADING TO A GENEROUS BALCONY THAT SPANS THE FRONT OF THE PROPERTY. LOWER SLOANE STREET IS LOCATED JUST OF SLOANE SQUARE AND IS AN EXCEPTIONAL PLACE TO LIVE WITH GREAT TRANSPORT LINKS SECONDS FROM YOUR DOORSTEP AND SOME OF THE WORLDS FINEST SHOPPING, BARS AND RESTAURANTS MOMENTS AWAY.

TIM LAWLER 35 EMMANUEL ROAD
LONDON
SW12 0HH
07939557155
TIM@TRISPENS.CO.UK



Energy Efficiency Rating		
	Current	Potential
Very energy efficient - lower running costs		
(92 plus) A		
(81-91) B		
(69-80) C		
(55-68) D	63	
(39-54) E		
(21-38) F		
(1-20) G		
Not energy efficient - higher running costs		
England & Wales		EU Directive 2002/91/EC