





15 Pine Street

Hollingwood • Chesterfield • S43 2LG

£155,000

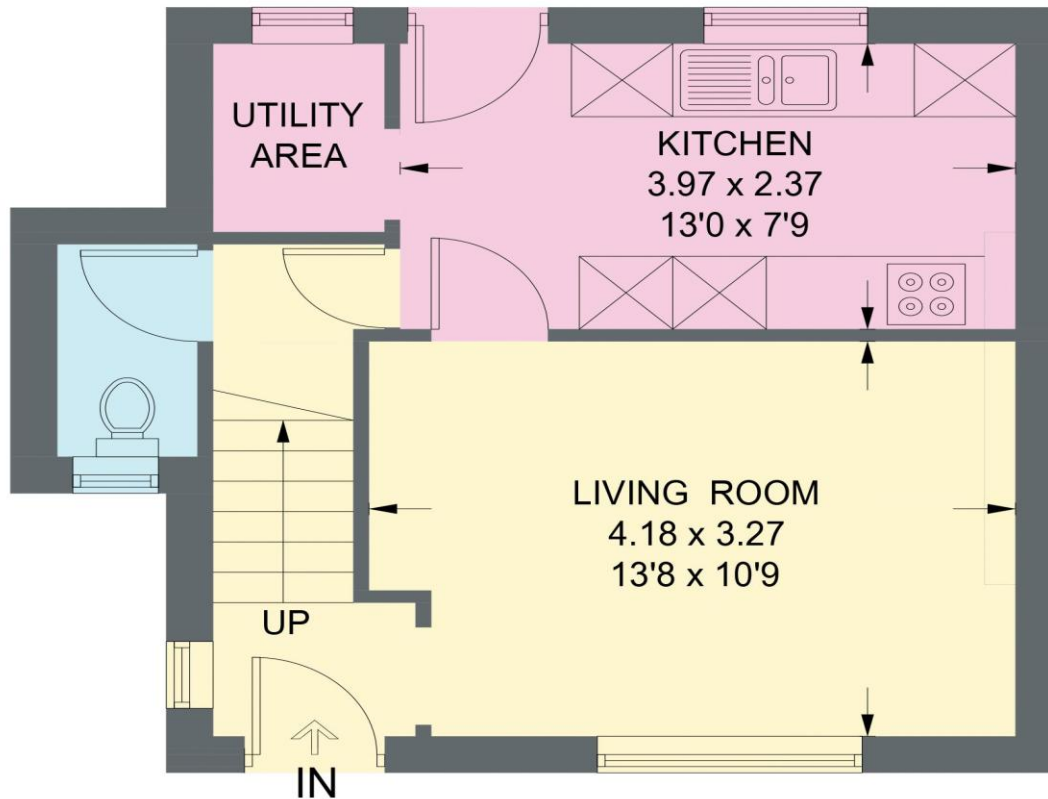
Situated in a popular residential area, this well-proportioned two-bedroom semi-detached home offers practical living space making it ideal for first-time buyers, small families, or couples, it features a functional layout, ample off-road parking, and a private enclosed garden. Upon entering, you are welcomed into a bright and spacious living room with a breakfast bar for casual dining or home working, leading through to a modern kitchen equipped with fitted appliances, space for white goods, and a handy utility area with direct access to the rear garden. A ground-floor WC adds practicality to the layout. Upstairs, two large double bedrooms provide ample space, with the principal bedroom featuring a generous storage cupboard that could easily serve as wardrobe space. A stylish three-piece shower room completes the first floor. Externally, the substantial private enclosed garden at the rear offers plenty of potential for either the addition of a summerhouse or potentially an extension to the property subject to planning. The property also benefits from ample off-road parking, accommodating multiple vehicles. Conveniently located near Ringwood Hall and just a short drive to Chesterfield town centre, this home offers excellent transport links and easy access to local shops, services, and leisure facilities.



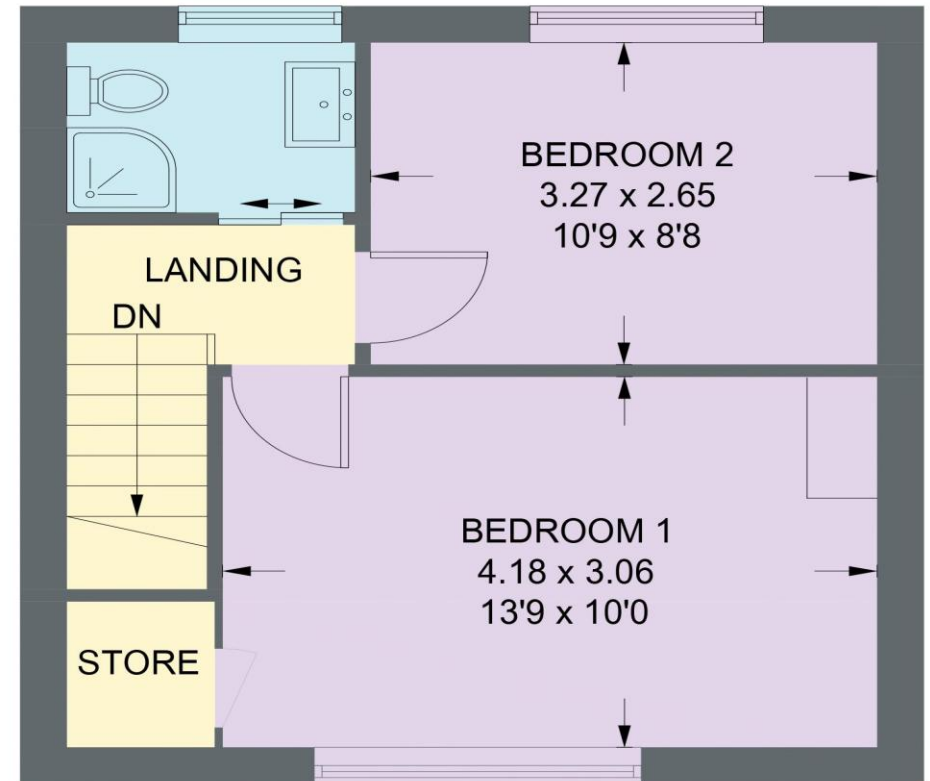
- Semi Detached House
- Two Double Bedroomed
- Fitted Kitchen With Integrated Cooking Appliances
- Substantial Private Enclosed Rear Garden
- Downstairs WC
- Modern Shower Room With Fitted Three-Piece Suite
- Off Road Parking
- uPVC Double Glazing, Gas Central Heating
- Close to Amenities & Good Transport Links
- Energy Rating: TBC, Tenure: Freehold

15 PINE STREET

APPROXIMATE GROSS INTERNAL AREA = 61.4 SQ M / 660.6 SQ FT



GROUND FLOOR
31.5 SQ M / 339.2 SQ FT



FIRST FLOOR
29.9 SQ M / 321.4 SQ FT

Illustration for identification purposes only, measurements are approximate, not to scale. (ID1198668)

IMPORTANT: we would like to inform prospective purchasers that these sales particulars have been prepared as a general guide only. A detailed survey has not been carried out, nor the services, appliances and fittings tested. Room sizes should not be relied upon for furnishing purposes and are approximate. If floor plans are included, they are for guidance only and illustration purposes only and may not be to scale. If there are any important matters likely to affect your decision to buy, please contact us before viewing the property.